

PARTS LIST

CAP FRAME

Table of Contents

- CAP FRAME BASE A..... WH-1a
- CAP FRAME BASE B (SINGLE HEAD M/C)..... WH-1b
- BASE FRAME 1A..... WH-2-1a
- BASE FRAME 1B (TCW-300B)..... WH-2-1b
- BASE FRAME 2..... WH-2-2
- WIDE CAP FRAME..... WH-3
- SEMI-WIDE CAP FRAME (TCW-180)..... WH-4a
- SEMI-WIDE CAP FRAME (TCW-180R)..... WH-4b
- SETTING FRAME 1..... WH-5-1
- SETTING FRAME 2..... WH-5-2

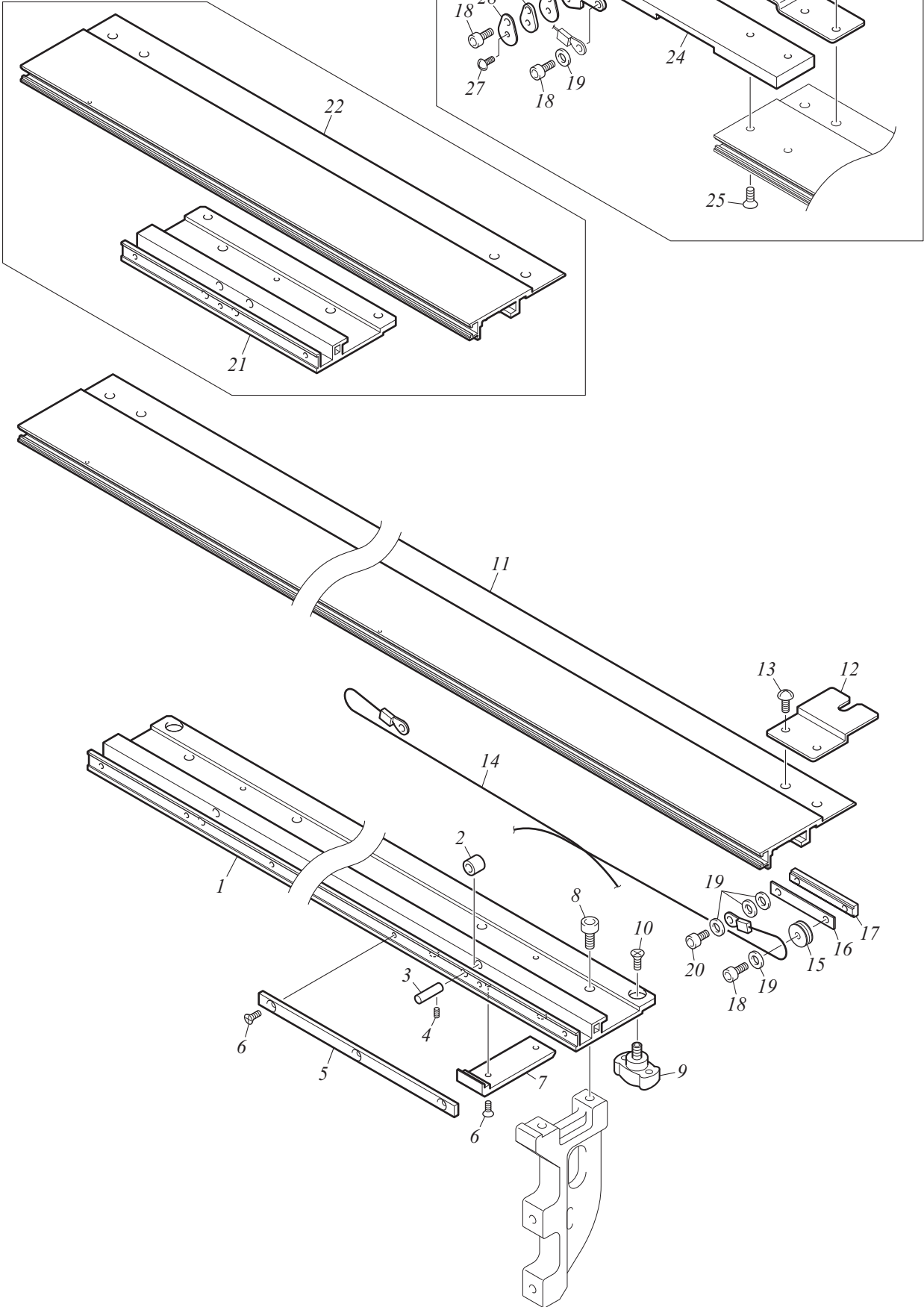
*Regarding the part number that contains description of @, the part differs depending on model, spec. etc.
When you place an order of such a part, please also inform us of your model, embroidery space and manufacturing number of the machine.

Ex.	TFMX-IIC906	(450X500)S	No.01234
	[Model]	[Emb. Space]	[Mfg. No.]

CAP FRAME BASE A

For the last head of odd-numbered head M/C

For X-emb. space 275mm M/C

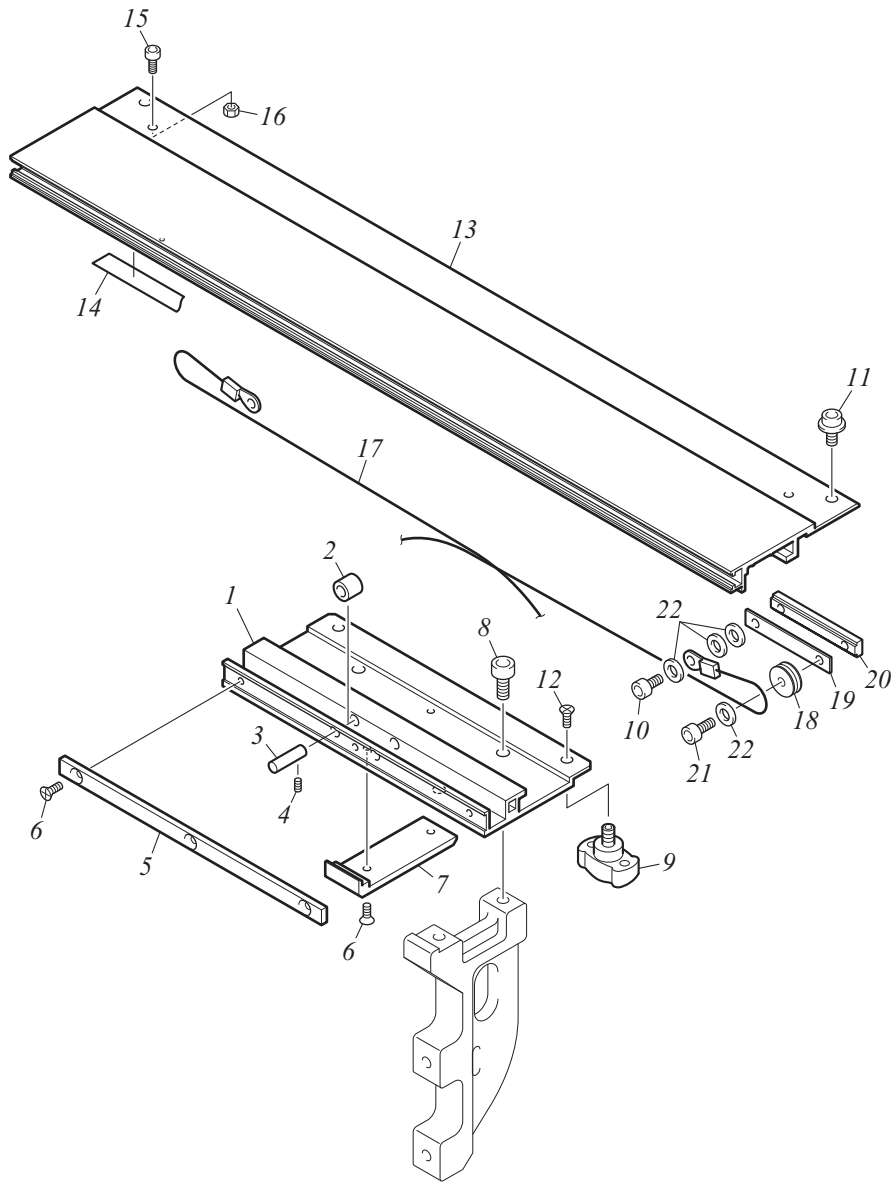


CAP FRAME BASE A

WH-01a

No.	Description	Part.No.	Remark
1	CAP FRAME BASE :275-530P[S]	0G432004@S00	
2	NEEDLE BEARING :TLA59Z	634600040000	
3	STRAIGHT PIN :NO.1 :5MM DIA.	503101020000	
4	HEXAGON SOCKET HEAD SET SCREW :M4*6	S170040601TN	
5	SPACER :NO.2 :T3.2	0G4340010000	
6	COUNTERSUNK HEAD SCREW :M3*5	S150030502SD	
7	SLIDE PLATE :TUBULAR GOODS FRAME BASE	0G4310030000	
8	HEXAGON SOCKET HEAD CAP SCREW :M5*12	S120051202TN	
9	KNOBBED SCREW :NO.2 :M5*9[S]	511F05070S10	
10	COUNTERSUNK HEAD SCREW :M3*6	S150030602SD	
11	SLIDE ANGLE :360S[S]	0G4310070S00	For 360P
11	SLIDE ANGLE :400S[S]	0G4310090S00	For 400P
11	SLIDE ANGLE :460S[S]	0G4310100S00	For 460P
11	SLIDE ANGLE :500S[S]	0G4310080S00	For 500P
12	HOLDER :SLIDE ANGLE	0G4310040000	
13	TRUSS HEAD SCREW :M4*6	S130040602SD	
14	WIRE :DRIVE RING[S]	0G4110040S10	
15	WIRE PULLEY	0G4340020000	
16	GUIDE PLATE :SLIDE ANGLE	0G4310020000	
17	PLATE NUT	0G4310010010	
18	HEXAGON SOCKET HEAD CAP SCREW :M4*12	S120041202TN	
19	PLAIN WASHER :M4*10*T0.8	S301041003SD	
20	HEXAGON SOCKET HEAD CAP SCREW :M4*8	S120040802TN	
21	CAP FRAME BASE :L156	0G4320050000	
22	SLIDE ANGLE :LAST HEAD[S]	0G4310110S00	
23	HOLDER :SLIDE ANGLE :B	0G4310060000	
24	FIXING BASE :WIRE	0G4340040000	
25	COUNTERSUNK HEAD SCREW :M4*10	S150041002SD	
26	BASE PLATE :WIRE GUIDE	0G4340070000	
27	TRUSS HEAD SCREW :M3*5	S130030502SD	
28	PLATE :WIRE GUIDE	0G4340060000	
29	GUIDE PLATE :WIRE	0G4340050000	
30			
31			
32			
33			
34			
35			
36			
37			
38			
39			
40			
41			
42			
43			
44			
45			
46			
47			

CAP FRAME BASE B (SINGLE HEAD M/C)



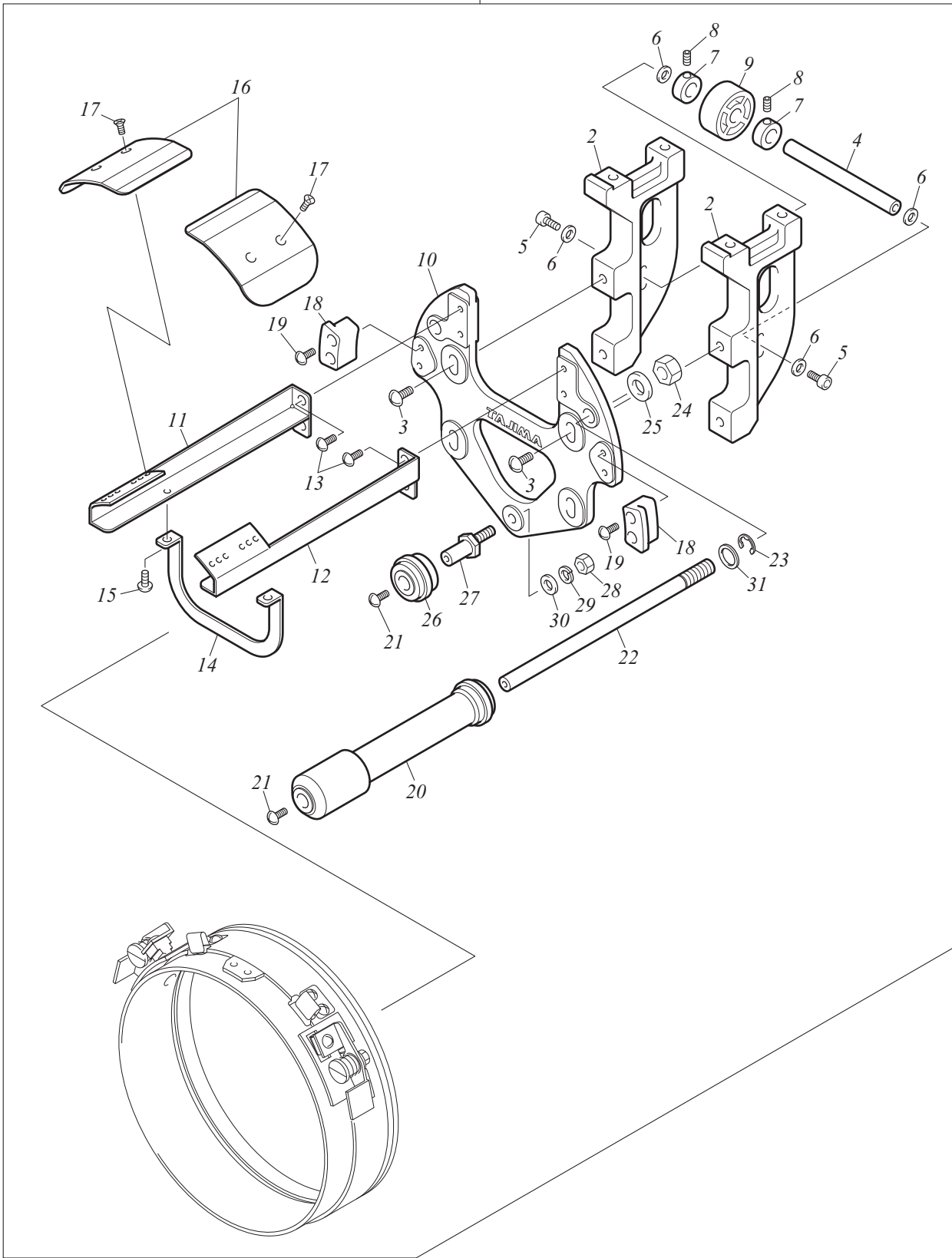
CAP FRAME BASE B (SINGLE HEAD M/C)

WH-1b

No.	Description	Part.No.	Remark
1	CAP FRAME BASE :B :L156	0G4320060000	
2	NEEDLE BEARING :TLA59Z	634600040000	
3	STRAIGHT PIN :NO.1 :5MM DIA.	503101020000	
4	HEXAGON SOCKET HEAD SET SCREW :M4*6	S170040601TN	
5	SPACER :NO.2 :T3.2	0G4340010000	
6	COUNTERSUNK HEAD SCREW :M3*5	S150030502SD	
7	SLIDE PLATE :TUBULAR GOODS FRAME BASE	0G4310030000	
8	HEXAGON SOCKET HEAD CAP SCREW :M5*12	S120051202TN	
9	KNOBBED SCREW :NO.2 :M5*9[S]	511F05070S10	
10	HEXAGON SOCKET HEAD CAP SCREW :M4*8	S120040802TN	
11	HEXAGON SOCKET HEAD FLANGE SCREW :M5*6	511A05030000	
12	COUNTERSUNK HEAD SCREW :M3*6	S150030602SD	
13	SLIDE ANGLE :L428	0G4310140000	
14	RAIL PLATE :0.5*10*358	518102040000	
15	HEXAGON SOCKET HEAD CAP SCREW :M4*5	S120040501TD	
16	HEXAGON NUT TYPE 1 :M4	S210040002SD	
17	WIRE :DRIVE RING[S]	0G4110040S00	
17	WIRE :DRIVE RING[S]	0G4180190S00	For TCW-300B
18	WIRE PULLEY	0G4340020000	
19	GUIDE PLATE :SLIDE ANGLE	0G4310020000	
20	PLATE NUT	0G4310010010	
21	HEXAGON SOCKET HEAD CAP SCREW :M4*12	S120041202TN	
22	PLAIN WASHER :M4*10*T0.8	S301041003SD	
23			
24			
25			
26			
27			
28			
29			
30			
31			
32			
33			
34			
35			
36			
37			
38			
39			
40			
41			
42			
43			
44			
45			
46			
47			
48			
49			

BASE FRAME 1A

1

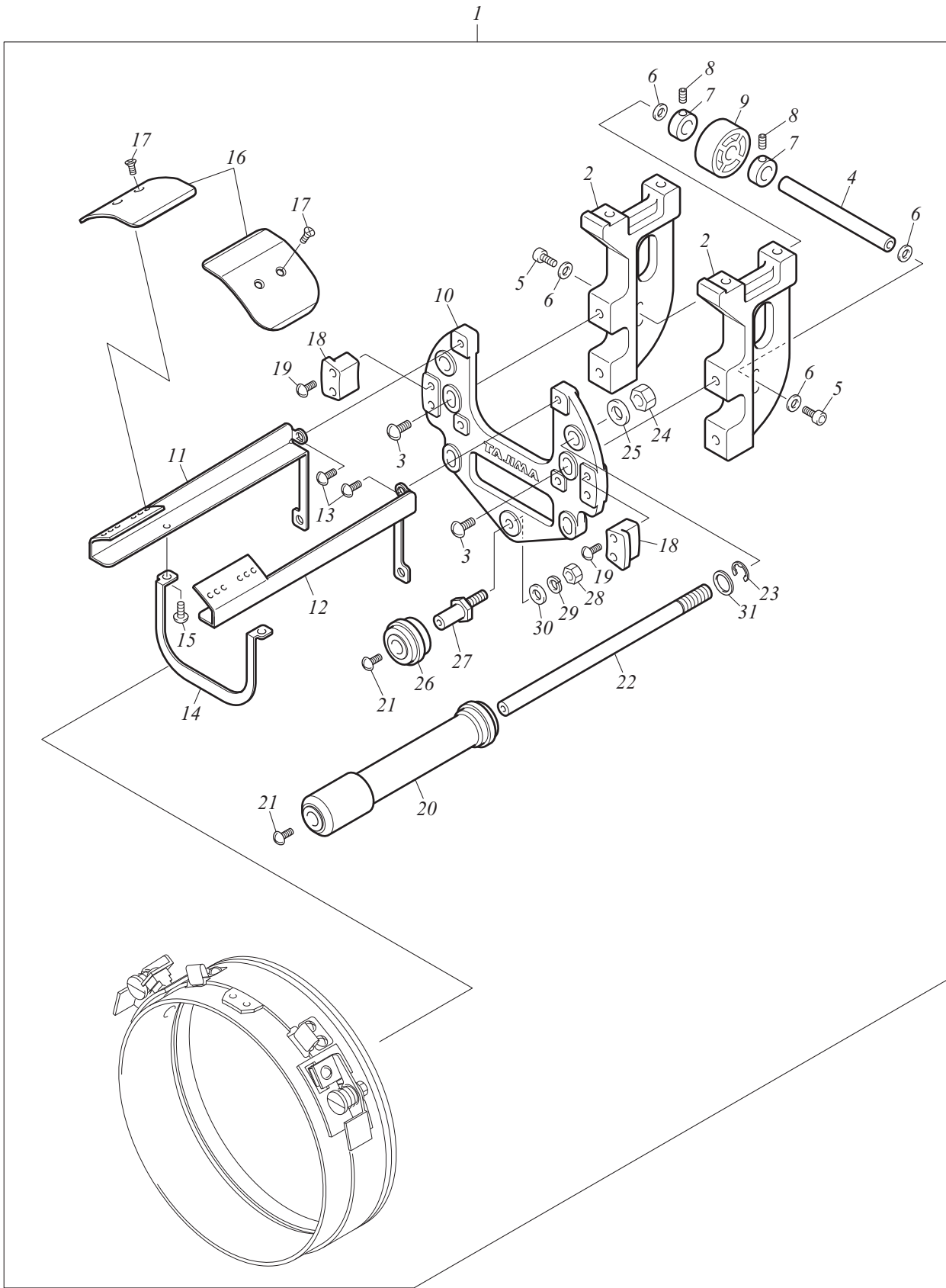


BASE FRAME 1A

WH-2-1a

No.	Description	Part.No.	Remark
1	CAP FRAME DRIVE RING :BGWU[A]	934200500A00	
2	BRACKET :DRIVE RING BASE[S]	0G4320010S10	
3	TRUSS HEAD SCREW :M5*15	S130051501SD	
4	STRAIGHT PIN :NO.1 :8MM DIA.	503101240010	
5	HEXAGON SOCKET HEAD CAP SCREW :M4*12	S120041202TN	
6	PLAIN WASHER :M4*12*T1.0	S301041201SC	
7	STOPPER COLLAR :8MM DIA.	502108020010	
8	HEXAGON SOCKET HEAD SET SCREW :M4*4	S170040401TN	
9	ROLLER :8*28*12.5	515108020010	
10	BASE :CAP FRAME	0G4130020010	
11	GUIDE BASE :WIDE CAP FRAME :L	0G418021L000	
12	GUIDE BASE :WIDE CAP FRAME :R	0G418021R000	
13	TRUSS HEAD SCREW :M4*8	S130040802SD	
14	JOINT	0G4110020010	
15	TRUSS HEAD SCREW :M3*4	S130030402SD	
16	GUIDE :NEEDLE PLATE	0G4110190010	
17	COUNTERSUNK HEAD SCREW :M3*4	S150030402SD	
18	GUIDE :DRIVE RING	0G4110100010	
19	TRUSS HEAD SCREW :M4*20	S130042001SD	
20	ROLLER :8MM DIA.[S]	515121030S10	
21	TRUSS HEAD SCREW :M4*6	S130040602SD	
22	SHAFT :GUIDE ROLLER	0G4110130000	
23	E-RING :6MM DIA.	611100090000	
24	HEXAGON NUT TYPE 1 :M8	S210080001SC	
25	PLAIN WASHER :M8*18*T1.6	S301081801SC	
26	ROLLER :8MM DIA.[S]	515121020S10	
27	SCREW WITH ROLLER PIN :NO.2 :M5E	505405030010	
28	HEXAGON NUT TYPE 1 :M5	S210050001SC	
29	SPRING WASHER :M5	S402050001KC	
30	PLAIN WASHER :M5*12*T0.8	S301051202SC	
31	LINER	0J1502200000	
32			
33			
34			
35			
36			
37			
38			
39			
40			
41			
42			
43			
44			
45			
46			
47			
48			
49			
50			

BASE FRAME 1B (TCW-300B)

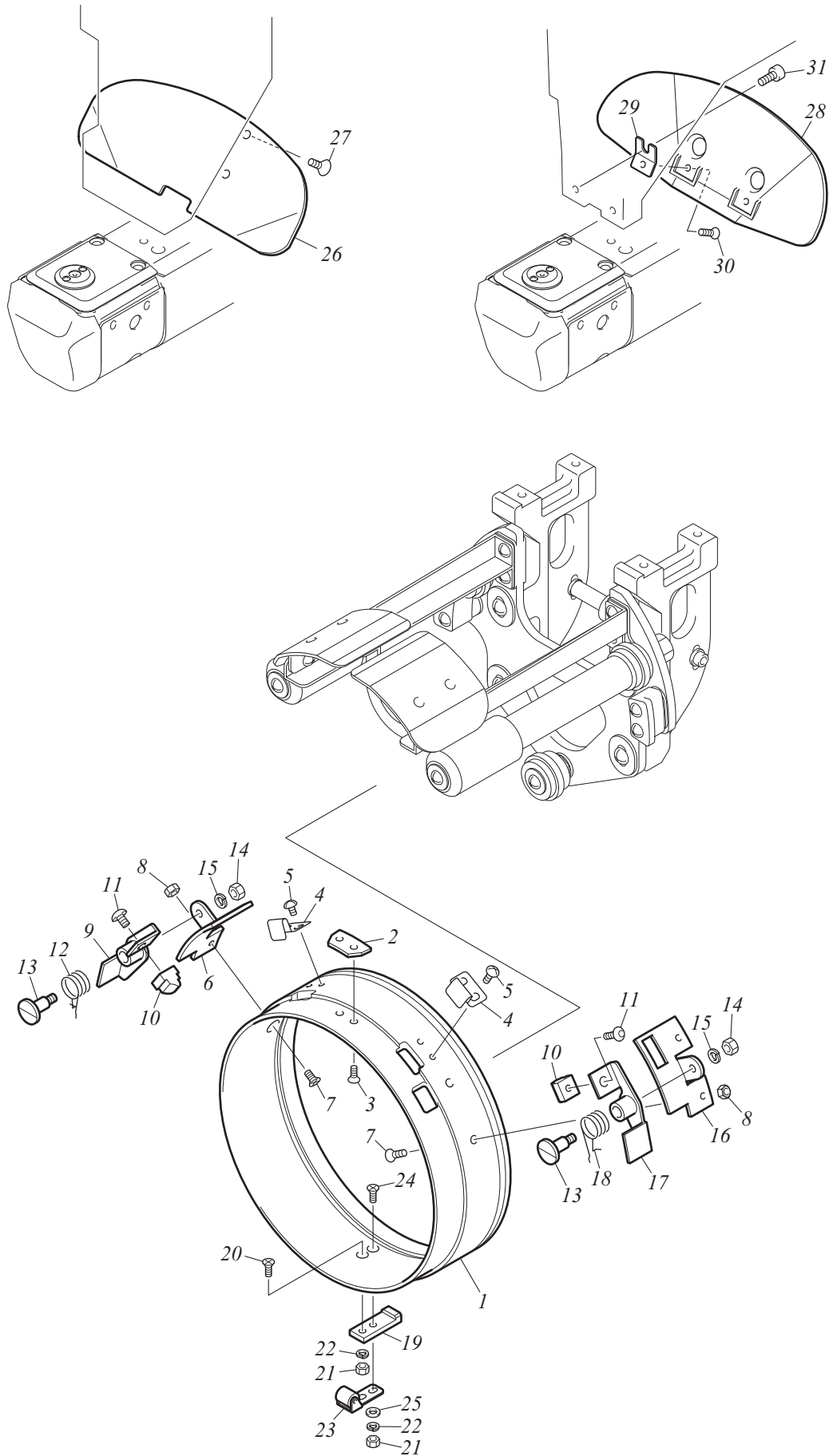


BASE FRAME 1B (TCW-300B)

WH-2-1b

No.	Description	Part.No.	Remark
1	CAP FRAME DRIVE RING :BGWB[A]	934200400A10	
2	BRACKET :DRIVE RING BASE :130MM DIA.[S]	0G4320030S10	
3	TRUSS HEAD SCREW :M5*15	S130051501SD	
4	STRAIGHT PIN :NO.1 :8MM DIA.	503101240010	
5	HEXAGON SOCKET HEAD CAP SCREW :M4*12	S120041202TN	
6	PLAIN WASHER :M4*12*T1.0	S301041201SC	
7	STOPPER COLLAR :8MM DIA.	502108040010	
8	HEXAGON SOCKET HEAD SET SCREW :M4*4	S170040401TN	
9	ROLLER :8*28*12.5	515108020010	
10	BASE :CAP FRAME :130MM DIA.	0G4140010000	
11	BASE :NEEDLE PLATE GUIDE BRACKET :130MM DIA. :L	0G412007L000	
12	BASE :NEEDLE PLATE GUIDE BRACKET :130MM DIA. :R	0G412007R000	
13	TRUSS HEAD SCREW :M4*8	S130040802SD	
14	REINFORCING PLATE :CAP FRAME :130MM DIA.	0G4120030010	
15	TRUSS HEAD SCREW :M3*4	S130030402SD	
16	GUIDE :NEEDLE PLATE :130MM DIA.	0G4120080000	
17	COUNTERSUNK HEAD SCREW :M3*4	S150030402SD	
18	INNER GROOVE RING GUIDE :130MM DIA. CAP FRAME FOR CHILDREN	0G4240030000	
19	TRUSS HEAD SCREW :M4*20	S130042001SD	
20	ROLLER :8MM DIA.[S]	515121040S00	
21	TRUSS HEAD SCREW :M4*6	S130040602SD	
22	SHAFT :GUIDE ROLLER	0G4110130000	
23	E-RING :6MM DIA.	611100090000	
24	HEXAGON NUT TYPE 1 :M8	S210080001SC	
25	PLAIN WASHER :M8*18*T1.6	S301081801SC	
26	ROLLER :8MM DIA.[S]	515121020S10	
27	SCREW WITH ROLLER PIN :NO.2 :M5E	505405030010	
28	HEXAGON NUT TYPE 1 :M5	S210050001SC	
29	SPRING WASHER :M5	S402050001KC	
30	PLAIN WASHER :M5*12*T0.8	S301051202SC	
31	LINER	0J1502200000	
32			
33			
34			
35			
36			
37			
38			
39			
40			
41			
42			
43			
44			
45			
46			
47			
48			
49			
50			

BASE FRAME 2



BASE FRAME 2

WH-2-2

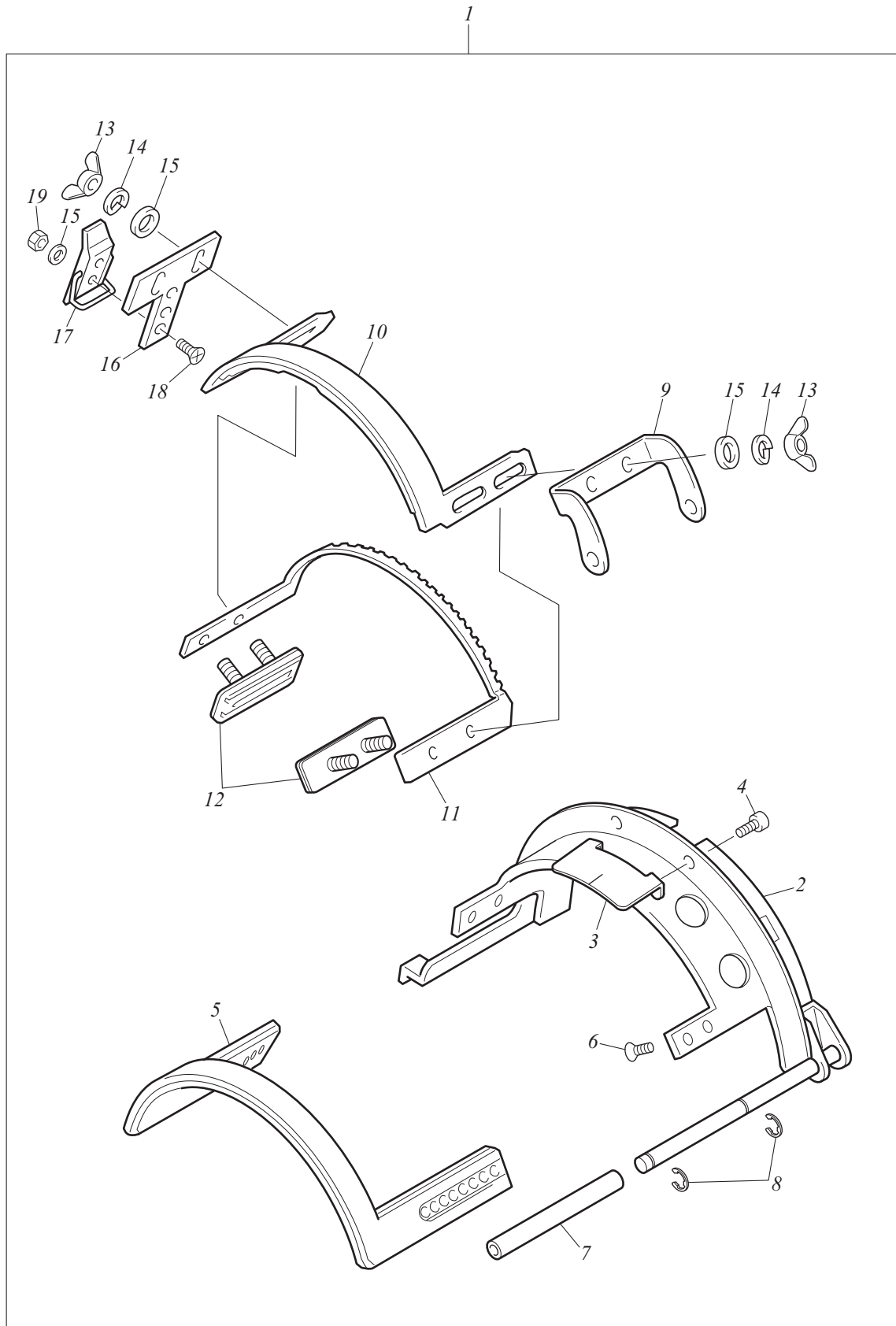
No.	Description	Part.No.	Remark
1	DRIVE RING	0G4110090000	
1	DRIVE RING :130MM DIA. CAP FRAME FOR CHILDREN	0G4240040000	For TCW-300B
2	GUIDE :BASE FRAME	0G4110060010	
2	GUIDE :BASE FRAME :130MM DIA.	0G4120050010	For TCW-300B
3	ROUND COUNTERSUNK HEAD SCREW :9/64*3.5	SA53740351CL	
4	PLATE SPRING :T0.5	507805070000	
5	TRUSS HEAD SCREW :M3*4	S130030402SD	
6	BRACKET :DRIVE RING LEVER :L	0G411007L010	
6	BRACKET :DRIVE RING LEVER :130MM DIA. :L	0G412002L000	For TCW-300B
7	COUNTERSUNK HEAD SCREW :M4*8	S150040801MZ	
8	HEXAGON NUT TYPE 3 :M4	S212040002SD	
9	ATTACHING/DETACHING LEVER :L	0G411005L010	
10	LOCK PIN	0G4110080010	
11	HEXAGON SOCKET HEAD BUTTON SCREW :M4*6	S124040601SC	
12	TORSION SPRING :1.1MM DIA.	507311010010	
13	STEPPED SCREW :NO.1 :M4*16.5	512104080010	
14	HEXAGON NUT TYPE 1 :M4	S210040002SD	
15	SPRING WASHER :M4	S402040001KC	
16	BRACKET :DRIVE RING LEVER :R	0G411007R010	
16	BRACKET :DRIVE RING LEVER :130MM DIA. :R	0G412002R000	For TCW-300B
17	ATTACHING/DETACHING LEVER :R	0G411005R010	
18	TORSION SPRING :1.1MM DIA.	507311020010	
19	HOLDER :WIRE	0G4110030000	
20	COUNTERSUNK HEAD SCREW :M3*12	S150031201MZ	
21	HEXAGON NUT TYPE 1 :M3	S210030003SD	
22	SPRING WASHER :M3	S402030002KD	
23	PRESSER :BASE FRAME[S]	0G4110110S00	
24	COUNTERSUNK HEAD SCREW :M3*15	S150031501SD	
25	PLAIN WASHER :M3*8*T0.5	S301030802SD	
26	GUIDE :CAP FRAME	0G4180170010	For TFGN-C, TFMX-C, TFMX-IIC
27	COUNTERSUNK HEAD SCREW :M3*4	S150030402SD	
28	GUIDE :CAP FRAME	0G4180020010	For TEMX-C, TEJTII-C
29	HOLDER :CAP FRAME GUIDE	0G4180030020	
30	COUNTERSUNK HEAD SCREW :M3*4	S150030402SD	
31	HEXAGON SOCKET HEAD CAP SCREW :M3*10	S120031002TN	
32			
33			
34			
35			
36			
37			
38			
39			
40			
41			
42			
43			
44			
45			
46			

WIDE CAP FRAME

WH-3

No.	Description	Part.No.	Remark
1	WIDE CAP FRAME :TCW :360[A]	934100100A10	
1	WIDE CAP FRAME :TCW :300B[A]	934100500A00	
1	WIDE CAP FRAME :TCW :300[A]	934100200A10	
2	BASE FRAME[S]	0G4130130S30	For TCW-360, 300
2	BASE FRAME[S]	0G4140050S20	For TCW-300B
3	HOLDER :BRIM	0G4130040020	
4	HEXAGON SOCKET HEAD CAP SCREW :M3*8	S120030802TN	
5	HOLDER :LID FRAME :B	0G4130080010	
6	HOLDER :CLIP	0G4130100010	For TCW-360, 300B
7	CLIP STOPPER :WIDE CAP FRAME[A]	0G4180230A00	For TCW-300
8	WASHER	0G4130220010	
9	HEXAGON NUT TYPE 1 :M4	S210040002SD	
10	SPRING WASHER :M4	S402040002KD	
11	PLAIN WASHER :M4*10*T0.8	S301041003SD	
12	CLIP [A]	0G4130050A00	
13	HEXAGON SOCKET HEAD CAP SCREW :M4*10	S120041001TD	
14	STEPPED SCREW :NO.1 :M4*18	0G4130120010	
15	HOLDER :LID FRAME :A	0G4130110010	
16	COUNTERSUNK HEAD SCREW :M3*6	S150030602SD	
17	HEXAGON NUT TYPE 1 :M3	S210030003SD	
18	SPRING WASHER :M3	S402030002KD	
19	PLAIN WASHER :M3*8*T0.5	S301030802SD	
20	LID FRAME	0G4130060000	For TCW-360, 300
21	LID FRAME :C	0G4180220000	For TCW-300B
21	PINCH LOCK :C1129	615600010000	
22	TRUSS HEAD SCREW :M3*5	S130030501MZ	
23	GUIDE :LID FRAME	0G4130090010	
24			
25			
26			
27			
28			
29			
30			
31			
32			
33			
34			
35			
36			
37			
38			
39			
40			
41			
42			
43			
44			
45			
46			

SEMI-WIDE CAP FRAME (TCW-180)

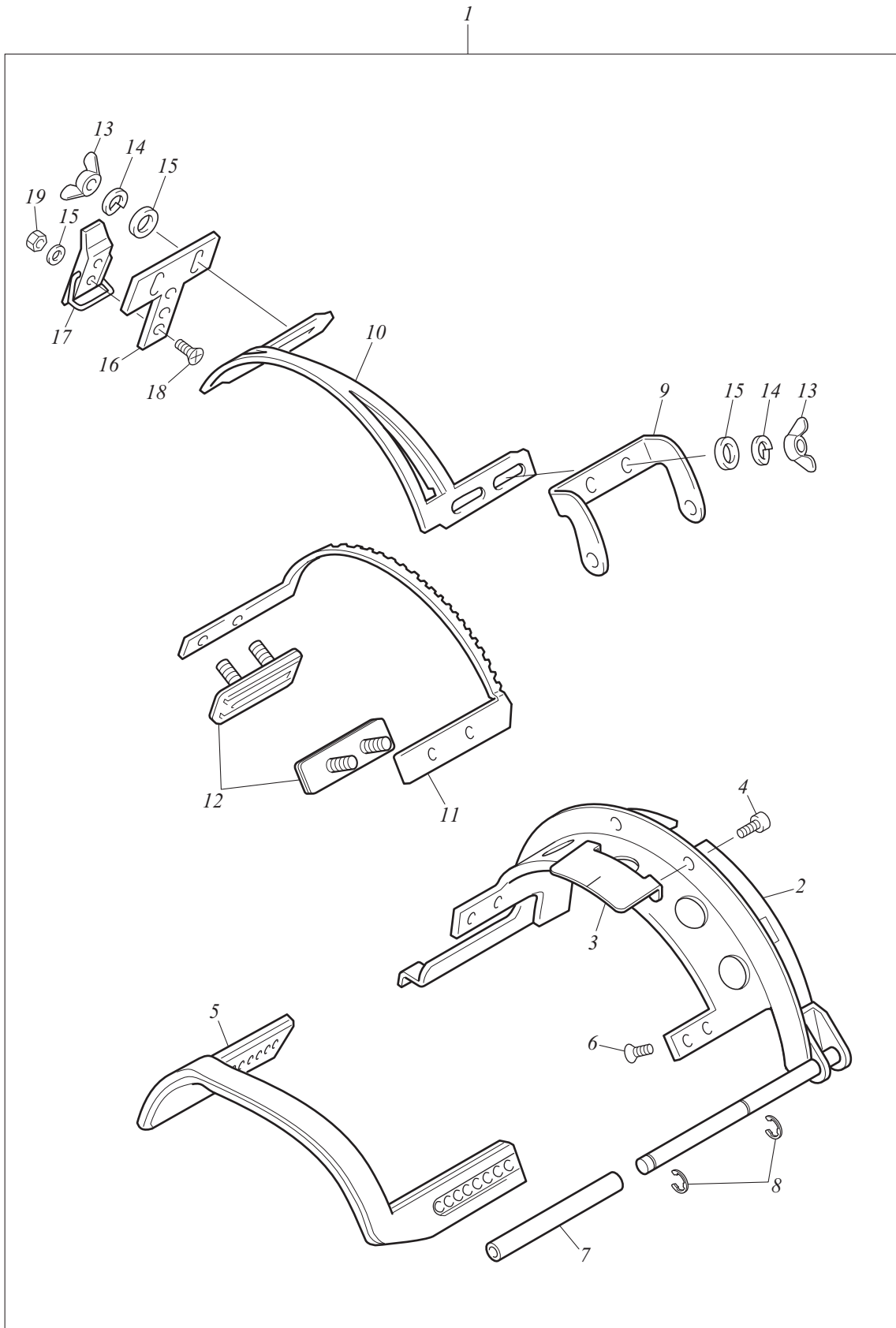


SEMI-WIDE CAP FRAME (TCW-180)

WH-4a

No.	Description	Part.No.	Remark
1	WIDE CAP FRAME :TCW :180[A]	934100300A10	
2	BASE FRAME :A[S]	0G4150080S10	
3	HOLDER :BRIM	0G4130040020	
4	HEXAGON SOCKET HEAD CAP SCREW :M3*8	S120030802TN	
5	BASE FRAME :B[S]	0G4150090S10	
6	ROUND COUNTERSUNK HEAD SCREW :9/64*3.5	SA53740351CL	
7	REINFORCING PIPE	0G4150010010	
8	E-RING :5MM DIA.	611100080000	
9	HOLDER :LID FRAME	0G4150110010	
10	LID FRAME :A	0G4130230010	
11	LID FRAME :B	0G4150120010	
12	BRACKET :LID FRAME HINGE	0G4150050020	
13	WING NUT TYPE 2 :M3	S215030001SD	
14	SPRING WASHER :M3	S402030002KD	
15	PLAIN WASHER :M3*8*T0.5	S301030802SD	
16	BASE :CLAMP	0G4150040000	
17	PINCH LOCK :C1129	615600010000	
18	COUNTERSUNK HEAD SCREW :M3*6	S150030601MZ	
19	HEXAGON NUT TYPE 1 :M3	S210030003SD	
20			
21			
22			
23			
24			
25			
26			
27			
28			
29			
30			
31			
32			
33			
34			
35			
36			
37			
38			
39			
40			
41			
42			
43			
44			
45			
46			
47			
48			
49			
50			

SEMI-WIDE CAP FRAME (TCW-180R)

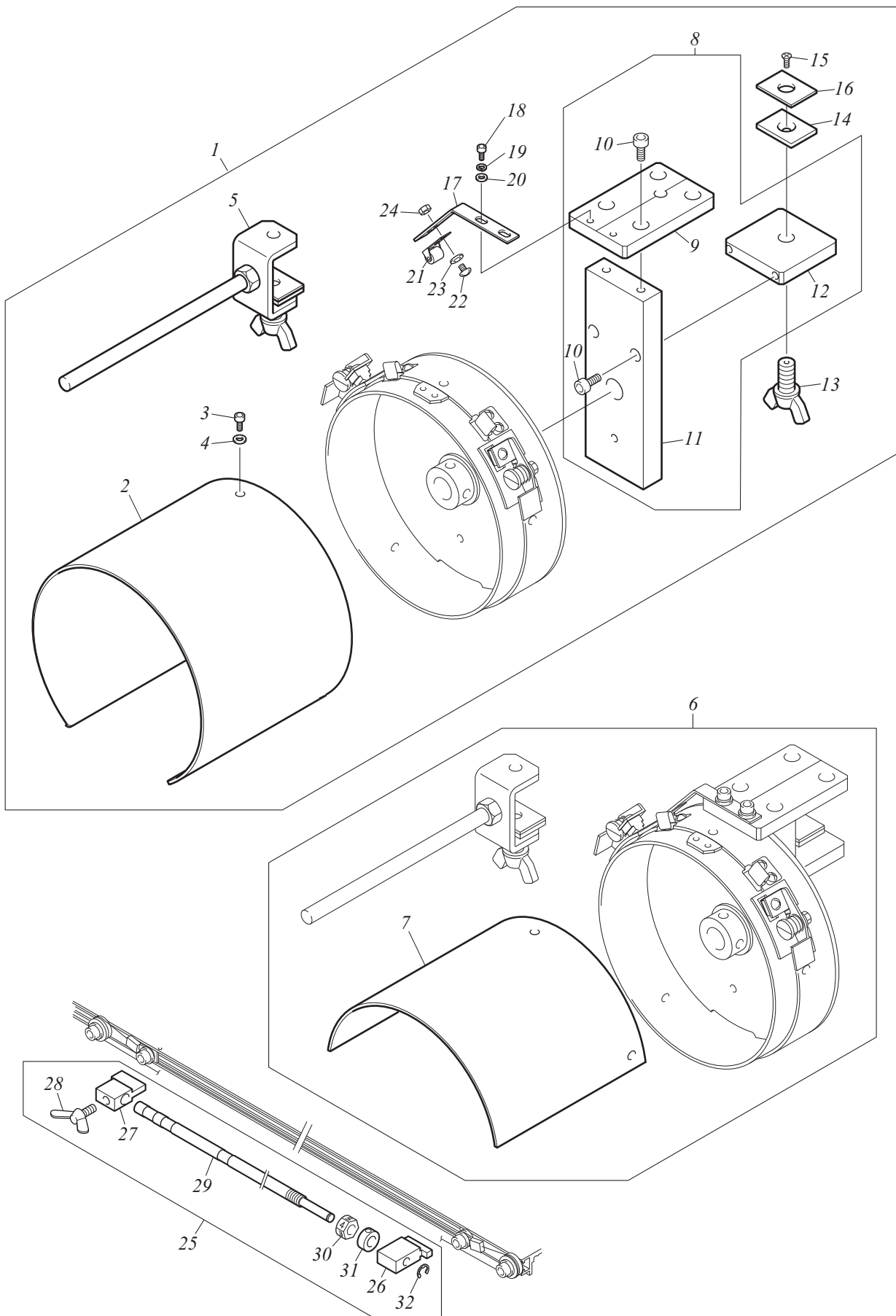


SEMI-WIDE CAP FRAME (TCW-180R)

WH-04b

No.	Description	Part.No.	Remark
1	WIDE CAP FRAME :TCW :180R[A]	934100400A10	
2	BASE FRAME :A[S]	0G4150080S10	
3	HOLDER :BRIM	0G4130040020	
4	HEXAGON SOCKET HEAD CAP SCREW :M3*8	S120030802TN	
5	BASE FRAME :B R-TYPE[S]	0G4150130S10	
6	ROUND COUNTERSUNK HEAD SCREW :9/64*3.5	SA53740351CL	
7	REINFORCING PIPE	0G4150010010	
8	E-RING :5MM DIA.	611100080000	
9	HOLDER :LID FRAME	0G4150110010	
10	LID FRAME :A R-TYPE	0G4130240010	
11	LID FRAME :B	0G4150120010	
12	BRACKET :LID FRAME HINGE	0G4150050020	
13	WING NUT TYPE 2 :M3	S215030001SD	
14	SPRING WASHER :M3	S402030002KD	
15	PLAIN WASHER :M3*8*T0.5	S301030802SD	
16	BASE :CLAMP	0G4150040000	
17	PINCH LOCK :C1129	615600010000	
18	COUNTERSUNK HEAD SCREW :M3*6	S150030601MZ	
19	HEXAGON NUT TYPE 1 :M3	S210030003SD	
20			
21			
22			
23			
24			
25			
26			
27			
28			
29			
30			
31			
32			
33			
34			
35			
36			
37			
38			
39			
40			
41			
42			
43			
44			
45			
46			
47			
48			
49			
50			

SETTING FRAME 1

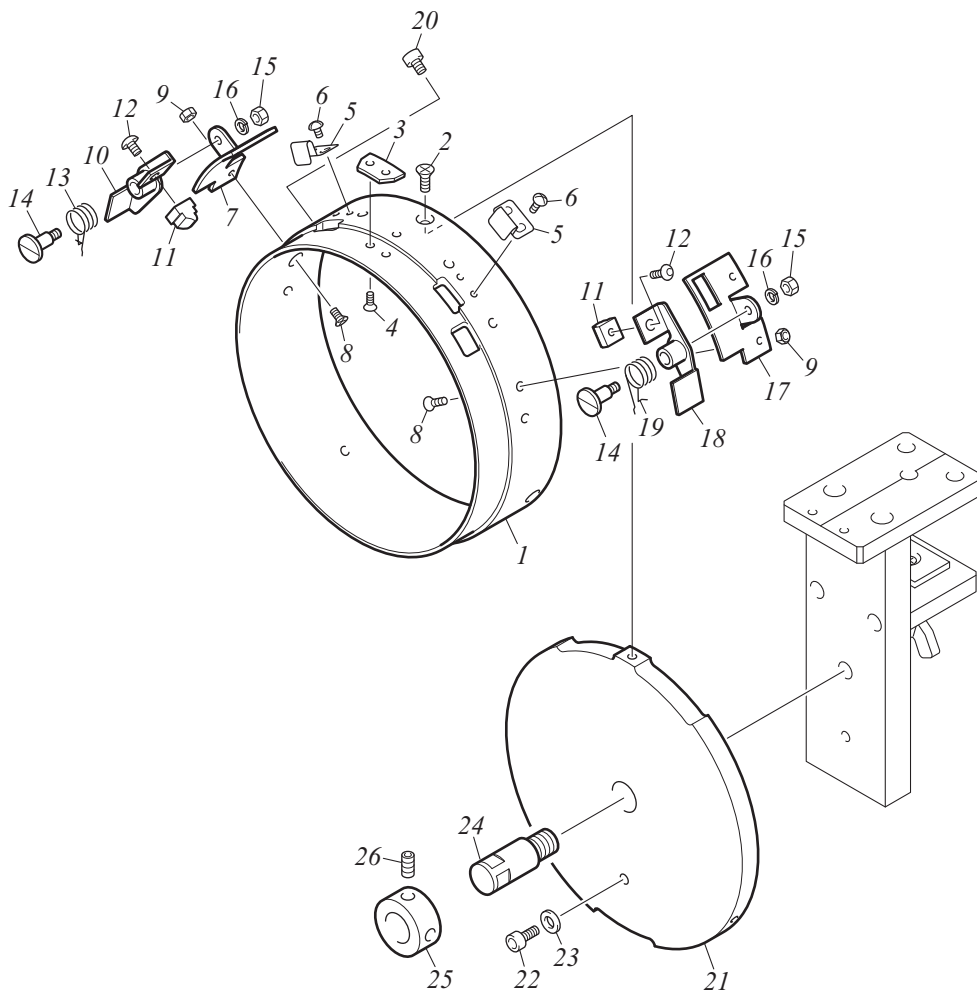


SETTING FRAME 1

WH-5-1

No.	Description	Part.No.	Remark
1	CAP FRAME GAUGE :CGWR-360[A]	934300100A00	For TCW-360, 300
1	CAP FRAME GAUGE :CGWR-300[A]	934300200A00	For TCW-300B
2	GAUGE RING :B	0G4160130010	For TCW-360, 300
2	GAUGE RING :B :130MM DIA.[S]	0G4170040010	For TCW-300B
3	HEXAGON SOCKET HEAD CAP SCREW :M3*6	S120030602TN	
4	PLAIN WASHER :M3*8*T0.5	S301030801SC	
5	HOLDER :LID FRAME[A]	0G4160010A20	
6	CAP FRAME GAUGE :CGWR-180[A]	934300300A00	For TCW-180, 180R
7	GAUGE RING :B	0G4160140010	For TCW-180, 180R
8	BASE :SETTING FRAME[A]	0G4160030A10	For TCW-360, 300
8	BASE :SETTING FRAME[A]	0G4180250A00	For TCW-300B
9	BASE A :SETTING FRAME	0G6180050100	
10	HEXAGON SOCKET HEAD CAP SCREW :M5*12	S120051202TN	
11	BASE B :SETTING FRAME	0G4180260000	For TCW-360, 300
11	BASE B :SETTING FRAME	0G4180250000	For TCW-300B
12	BASE C :SETTING FRAME	0G6180050300	
13	WING BOLT :M10*19	0G4160070010	
14	PATCH PLATE :TABLE	0G4160050010	
15	COUNTERSUNK HEAD SCREW :M3*8	S150030802SD	
16	RUBBER PLATE	0G4160060010	
17	BRACKET :BASE FRAME PRESSER	0G4160080000	
18	HEXAGON SOCKET HEAD CAP SCREW :M4*10	S120041002TN	
19	SPRING WASHER :M4	S402040001KC	
20	PLAIN WASHER :M4*10*T0.8	S301041002SC	
21	PRESSER :BASE FRAME[S]	0G4110110S00	
22	PAN HEAD SCREW :M3*5	S160030502SD	
23	PLAIN WASHER :M3*8*T0.5	S301030802SD	
24	HEXAGON NUT TYPE 1 :M3	S210030003SD	
25	GAUGE :WIRE TENSION[A]	934600100A00	
26	BLOCK :TENSION GAUGE :A	0G4180050000	
27	BLOCK :TENSION GAUGE :B	0G4180060010	
28	WING BOLT :M6*L10	S180061001SD	
29	ROD :TENSION GAUGE	0G4340030010	
30	NUT :TENSION GAUGE	0G4180070000	
31	STOPPER COLLAR :8MM DIA.	502108040010	
32	E-RING :5MM DIA.	611100080000	
33			
34			
35			
36			
37			
38			
39			
40			
41			
42			
43			
44			
45			
46			

SETTING FRAME 2



SETTING FRAME 2

WH-5-2

No.	Description	Part.No.	Remark
1	GAUGE RING :A	0G4160120000	For TCW-360, 300, 180, 180R
1	GAUGE RING :A	0G4170060000	For TCW-300B
2	COUNTERSUNK HEAD SCREW :M4*15	S150041501SD	
3	GUIDE :BASE FRAME	0G4110060010	
3	GUIDE :BASE FRAME :130MM DIA.	0G4120050010	For TCW-300B
4	ROUND COUNTERSUNK HEAD SCREW :9/64*3.5	SA53740351CL	
5	PLATE SPRING :T0.5	507805070000	
6	TRUSS HEAD SCREW :M3*4	S130030402SD	
7	BRACKET :DRIVE RING LEVER :L	0G411007L010	
7	BRACKET :DRIVE RING LEVER :130MM DIA. :L	0G412002L000	For TCW-300B
8	COUNTERSUNK HEAD SCREW :M4*8	S150040802SD	
9	HEXAGON NUT TYPE 3 :M4	S212040002SD	
10	ATTACHING/DETACHING LEVER :L	0G411005L010	
11	LOCK PIN	0G4110080010	
12	HEXAGON SOCKET HEAD BUTTON SCREW :M4*6	S124040601SC	
13	TORSION SPRING :1.1MM DIA.	507311010010	
14	STEPPED SCREW :NO.1 :M4*16.5	512104080010	
15	HEXAGON NUT TYPE 1 :M4	S210040002SD	
16	SPRING WASHER :M4	S402040001KC	
17	BRACKET :DRIVE RING LEVER :R	0G411007R010	
17	BRACKET :DRIVE RING LEVER :130MM DIA. :R	0G412002R000	For TCW-300B
18	ATTACHING/DETACHING LEVER :R	0G411005R010	
19	TORSION SPRING :1.1MM DIA.	507311020010	
20	HEXAGON SOCKET HEAD CAP SCREW :M3*3	S120030301TN	
21	BASE :GAUGE RING	0G4160090020	For TCW-360, 300, 180, 180R
21	LID :GAUGE RING	0G4170070000	For TCW-300B
22	HEXAGON SOCKET HEAD CAP SCREW :M4*15	S120041501TN	
23	PLAIN WASHER :M4*10*T0.8	S301041002SC	
24	SCREW WITH PIN :NO.1 :M10-23	513110020000	
25	STOPPER COLLAR :15MM DIA.	502115030000	
26	HEXAGON SOCKET HEAD SET SCREW :M6*8	S170060801TN	
27			
28			
29			
30			
31			
32			
33			
34			
35			
36			
37			
38			
39			
40			
41			
42			
43			
44			
45			

2nd Edition **April, 1998**
3rd Edition **February, 1999**
4th Edition **May, 1999**
5th Edition **June, 1999**
6th Edition **March, 2001**
7th Edition **September, 2001**
8th Edition **July, 2002**
9th Edition **February, 2003**
10th Edition **November, 2004**
11th Edition **January, 2008**

■ **Manufactured by:**
Tokai Industrial Sewing Machine Co., Ltd.

NO.1800, Ushiyama-cho, Kasugai, Aichi-pre., 486-0901, Japan
Telephone:568-33-1161 Fax:568-33-1191

■ **Distributed by:**
Tajima Industries Ltd.

19-22, Shirakabe, 3-chome, Higashi-ku, Nagoya, 461-0011, Japan
Telephone:52-932-3444 Fax:52-932-2457

■ **Authorized Distributor:**



●Copy, reprint, or reform of a part or whole of this manual without permission is prohibited.