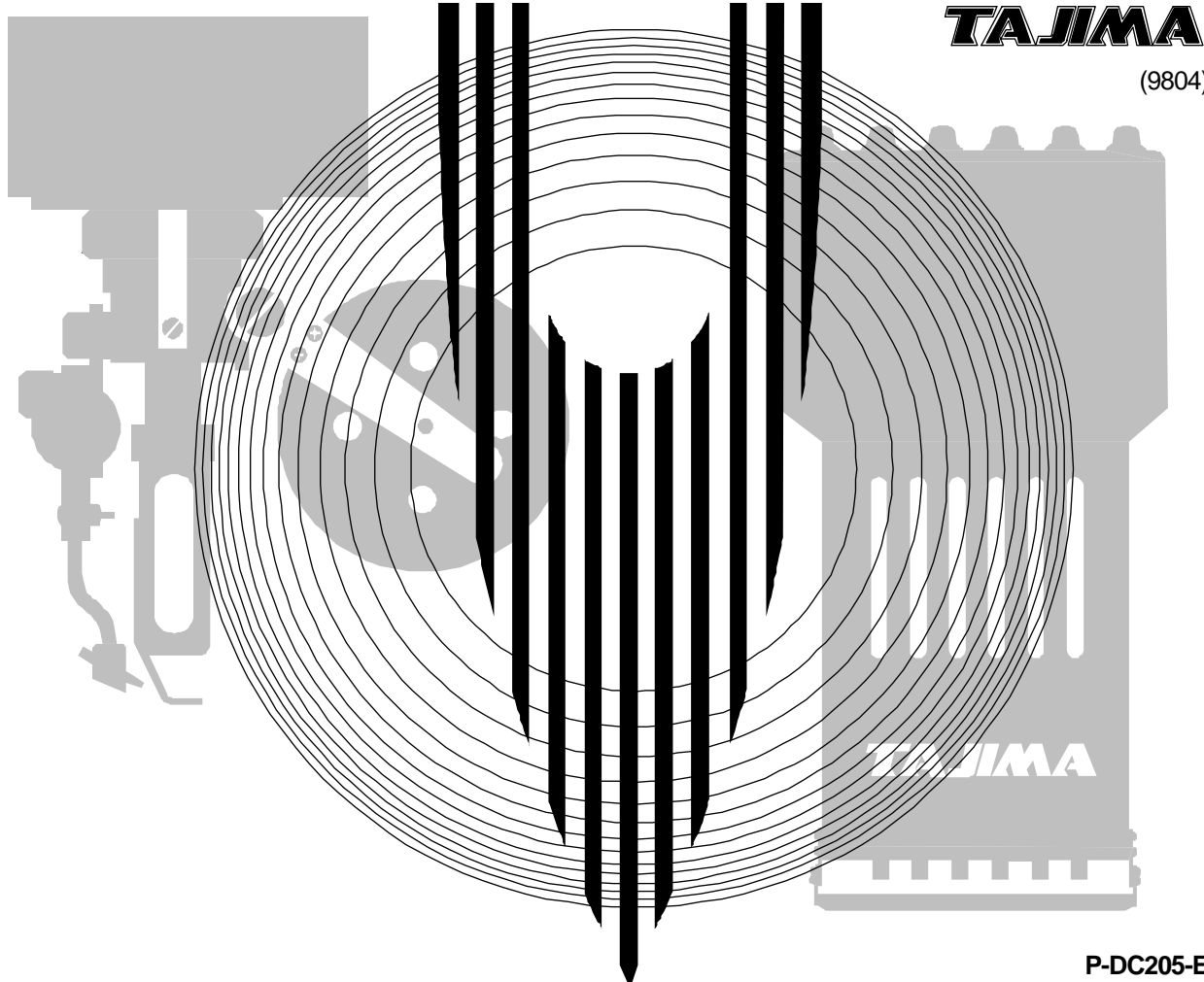


PARTS LIST

TMFD-C (TYPE D2)



TAJIMA

(9804)

Table of Contents

● TMFD-C GENERAL VIEW	
● TMFD-C FRAME	DC-1
● TMFD-C TABLE	DC-2-1
● TMFD-C AUTO SUB TABLE	DC-2-2
● TMFD-C BOX	DC-3
● TMFD-C CYLINDER BED 1	DC-4-1
● TMFD-C CYLINDER BED 2	DC-4-2
● TMFD-C COLOR CHANGE SYSTEM	DC-5
● TMFD-C ARM 1	DC-6-1
● TMFD-C ARM 2	DC-6-2
● TMFD-C ARM 3	DC-6-3
● TMFD-C ARM 1 (NOISE REDUCTION TYPE)	DCN-6-1
● TMFD-C ARM 2 (NOISE REDUCTION TYPE)	DCN-6-2
● TMFD-C ARM 3 (NOISE REDUCTION TYPE)	DCN-6-3
● TMFD-C NEEDLE BAR CASE 1	DC-7-1
● TMFD-C NEEDLE BAR CASE 1 (NR TYPE)	DCN-7-1
● TMFD-C NEEDLE BAR CASE 2	DC-7-2
● TMFD-C FRONT COVER	DC-8
● TMFD-C UPPER THREAD HOLDER SET	DC-9
● TMFD-C CAM DRIVE SYSTEM SET 1	DC-10-1
● TMFD-C CAM DRIVE SYSTEM SET 2	DC-10-2
● TMFD-C X-AXIS DRIVE SYSTEM 1	DC-11-1
● TMFD-C X-AXIS DRIVE SYSTEM 2	DC-11-2
● TMFD-C Y-AXIS DRIVE SYSTEM 1	DC-12-1
● TMFD-C Y-AXIS DRIVE SYSTEM 2	DC-12-2
● TMFD-C INDIVIDUAL TENSION BASE	DC-13
● TMFD-C THREAD STAND	DC-14
● TMFD-C EMBROIDERY FRAME	DC-15
● TMFD-C POWER SUPPLY BOX	DC-16
● TMFD-C DRIVER BOX	DC-17
● TMFD-C CONTROLLER BOX	DC-18
● TMFD-C MAIN SHAFT MOTOR	DC-19

Part Nos. of screws, nuts, washers etc. are listed at the end of volume.

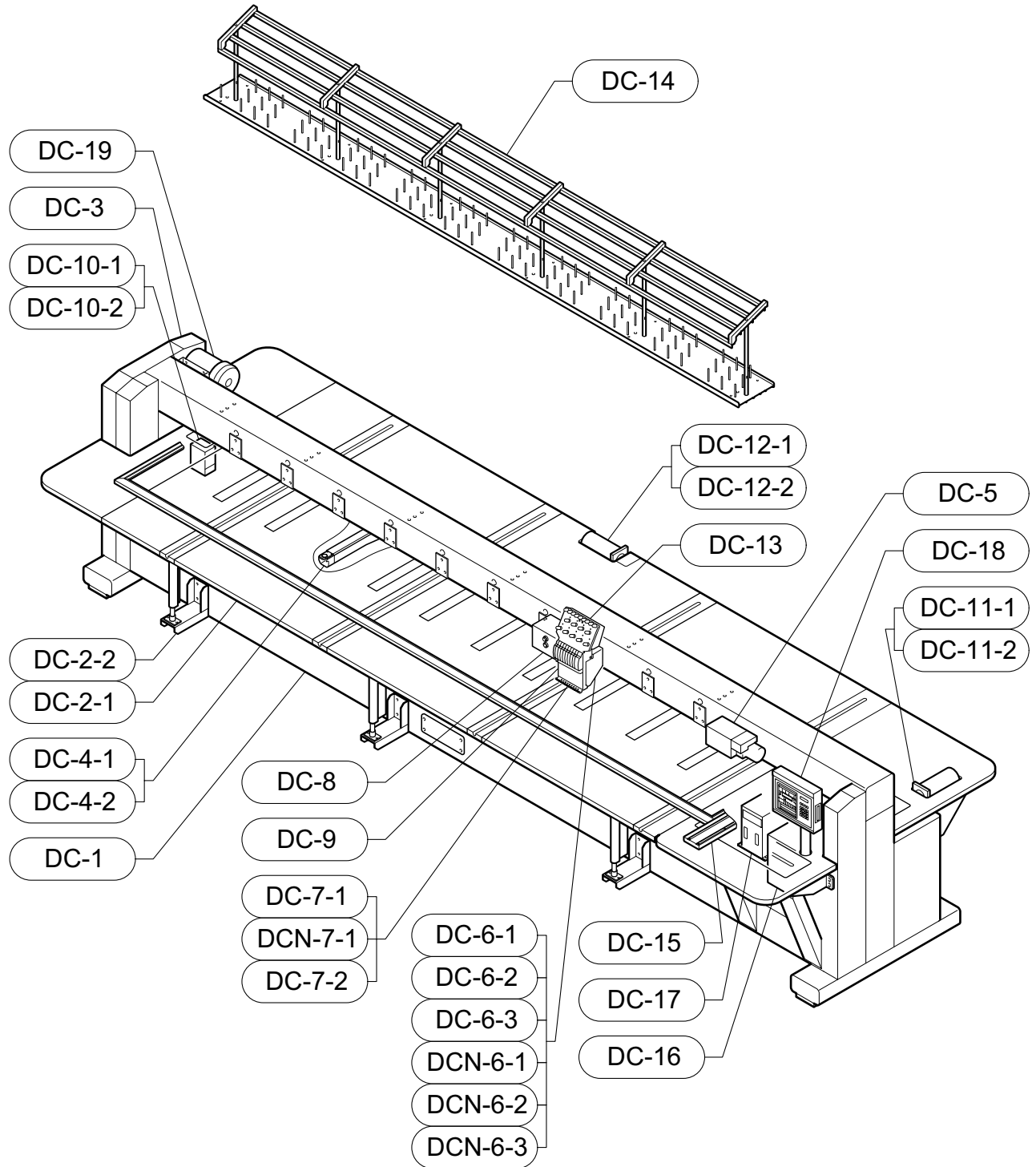
[Explanation of Marks #'s and *'s at End of Part No.]

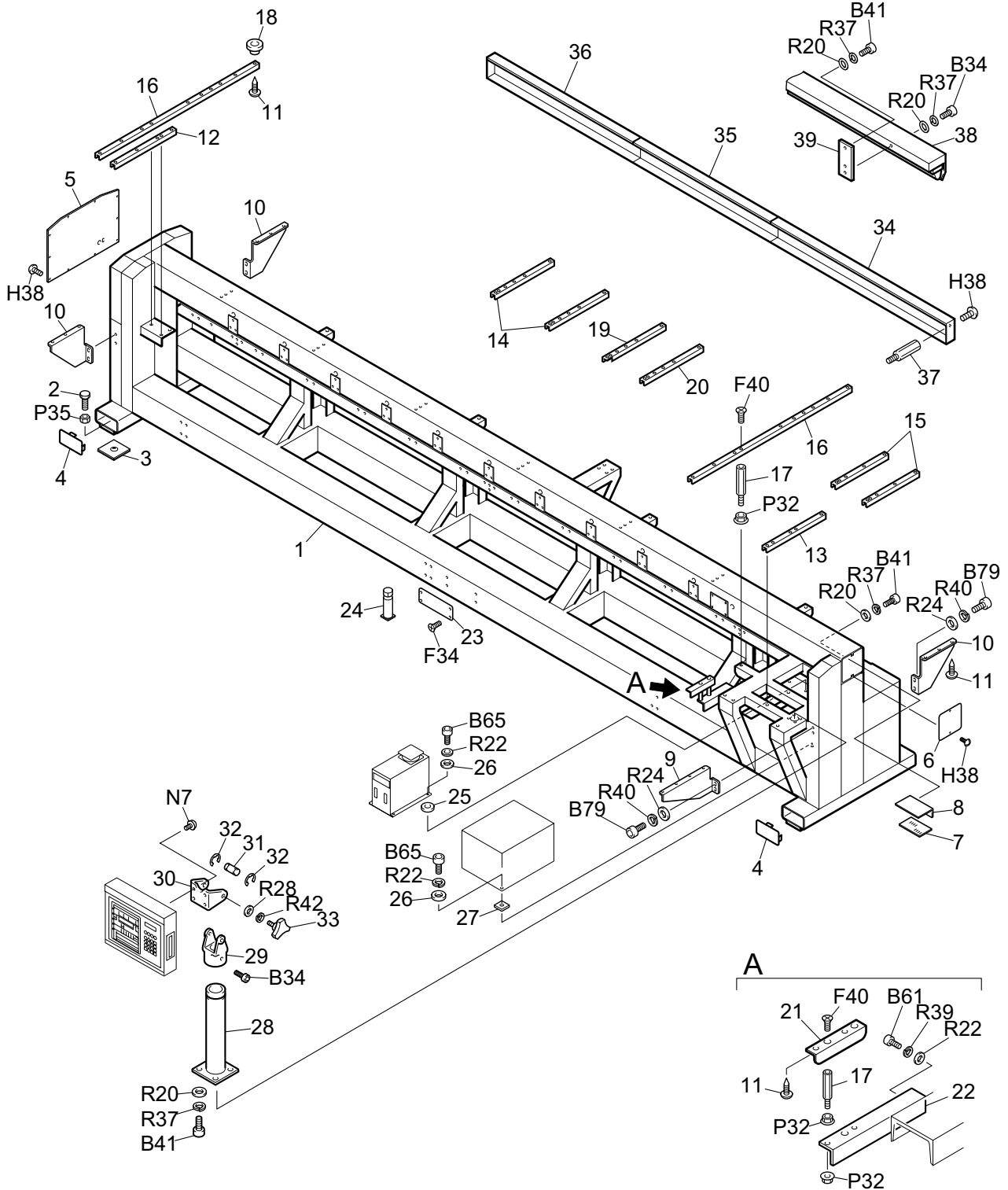
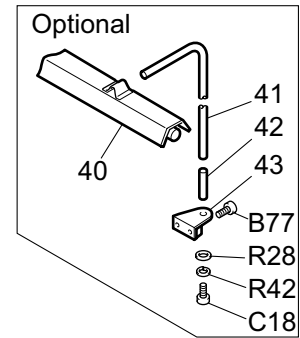
- ◆ Please specify, in the following manner, your machine model, manufacturing number and embroidery space when you order us with the parts having **** at the end of the part No. :

Ex. : TMFD-612	(450 X 275)S,	No.01234
[Model]	[Emb. Space]	[Mfg.No.]

- ◆ Please specify the number of needles on your machine's head in your parts order by changing the marks ### into one of the 4-digit numbers below:

Ex. : The part Number, EF012345###	
4-digit Numbers	Machine Type
0300	3-needle machine
0600	6-needle machine
0900	9-needle machine
1200	12-needle machine





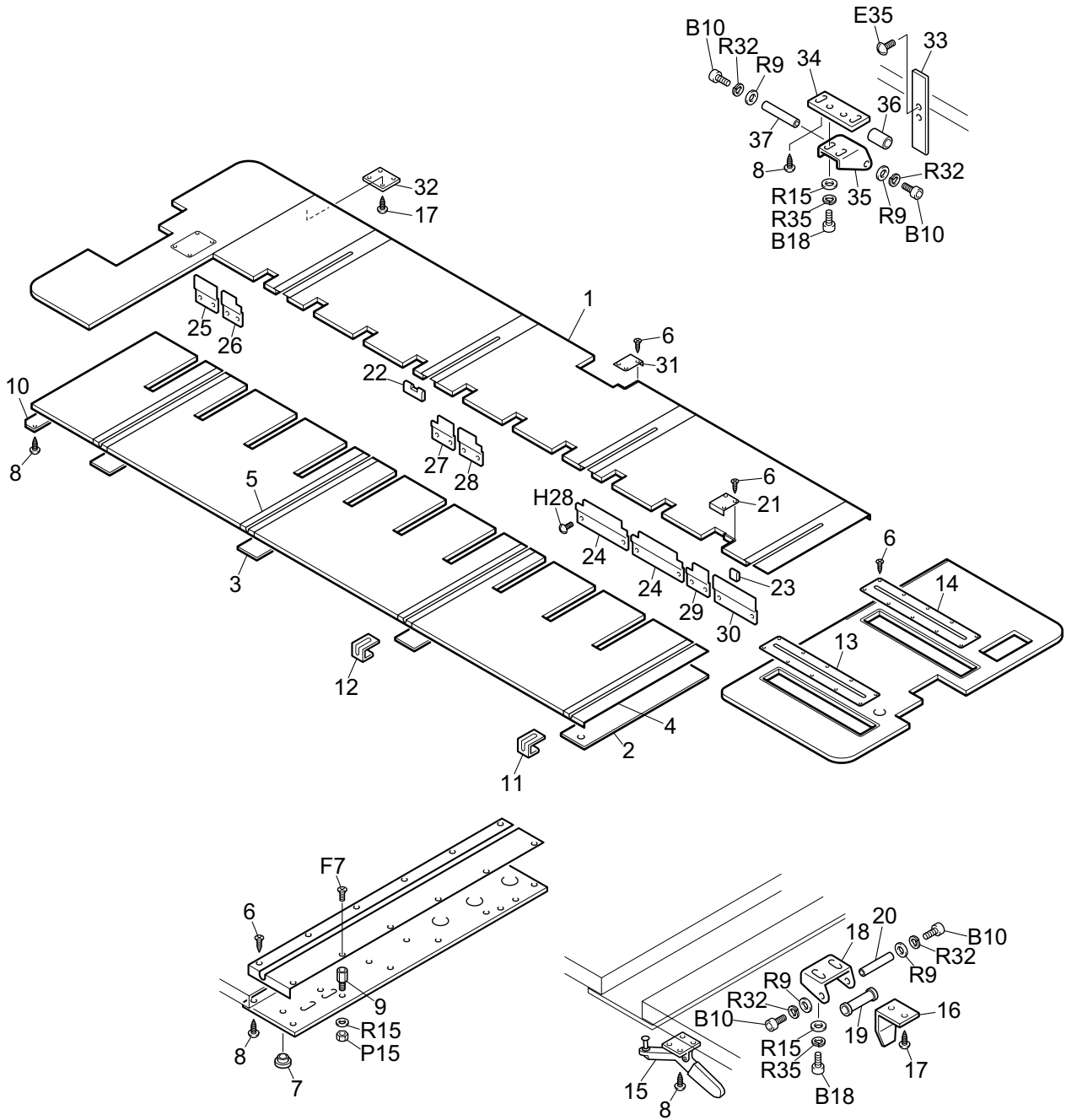
TMFD-C FRAME

DC-1

Ref. No.	Description	Part No.	Remark
1	Stand	DC 0 8 2 0 0 1 * * * *	
1	Stand	DC G 8 2 0 0 1 * * * *	G-Spec.M/C only
2	Adjusting Bolt	E F 0 8 0 9 0 0 0 0 0 0	
3	Vibration-preventive Base	E F 0 8 1 0 0 0 0 0 0 0	
4	Stand Cover, Lower	CT 0 8 1 9 0 0 0 0 0 0	
5	Left-end Box Cover	DC 0 8 4 5 0 1 0 0 0 0	
5	Left-end Box Cover	DC G 8 4 5 0 1 0 0 0 0	For M/C 6246mm or longer
6	Square Pipe Cover	ED G 8 2 0 0 0 0 0 0 0	
6	Square Pipe Cover	CT 0 1 0 3 0 1 0 0 0 0	For M/C 6246mm or longer
7	TC Joint 4 Card	ED 7 2 0 1 0 0 0 0 0 0	
8	TC Joint 4 Card Fixture	ED 7 2 0 2 0 1 0 0 0 0	
9	No.4 Table Support	CE 0 9 0 4 0 A 0 0 0 0	
10	No.4 Table Support	E F 1 0 0 5 0 1 0 0 0 0	
11	Round Head Wood Screw		5.1P*25
12	No.3 Table Support	DC 0 8 2 5 0 1 * * * *	
13	No.6 Table Support	DC 0 8 2 9 0 2 * * * *	
14	No.8 Table Support	DC 0 8 3 0 0 1 * * * *	
15	No.9 Table Support	DC 0 8 3 1 0 1 * * * *	
16	No.10 Table Support	DC 0 8 3 2 0 1 * * * *	
17	Table Support Stud	E F 1 0 0 1 0 1 0 0 0 0	
18	Table Support Spacer	MX 1 0 9 9 0 0 0 0 0 0	
19	No.11 Table Support	DC 0 8 3 3 0 1 * * * *	
20	No.12 Table Support	DC 0 8 3 4 0 1 * * * *	
21	No.5 Table Support	FC 0 8 4 2 0 A * * * *	
22	Table Support Bracket R	EG 1 0 0 5 R A 0 0 0 0	
23	TAJIMA Brand Name Plate	CT 0 8 2 5 0 1 0 0 0 0	
24	Stand Stud Bolt	E F 0 8 0 8 0 0 0 0 0 0	
25	Vibration-preventive Rubber A	E F 0 8 3 3 A 0 0 0 0 0	
26	Vibration-preventive Rubber B	E F 0 8 3 3 B 0 0 0 0 0	
27	Vibration-preventive Rubber C	F H 0 8 3 3 0 0 0 0 0 0	
28	Operation Panel Stand Pipe	CT 0 8 3 3 0 A 0 0 0 0	
29	Operation Panel Bracket	EG 0 1 0 3 0 B 0 0 0 0	
30	Operation Panel Attaching Arm	EG 0 1 0 4 0 A 0 0 0 0	
31	Operation Panel Hinge Pin	EG 0 1 0 5 0 1 0 0 0 0	
32	E-ring	B P E 9 0 0 0 0 0 0 0 0	
33	Knobbed Bolt	B P M 1 0 L 2 0 0 0 0 0	M10*20
34	No.1 Wiring Cover	XC 0 8 0 7 0 A * * * *	
35	No.2 Wiring Cover	XC 0 8 0 8 0 A * * * *	
36	No.3 Wiring Cover	XC 0 8 0 9 0 A * * * *	
37	Wiring Cover Stud	EG 0 8 0 8 0 0 0 0 0 0	
38	Fluorescent Lamp	EG 7 4 0 1 0 1 * * * *	For Japan
38	Fluorescent Lamp	ED 7 4 0 1 0 0 * * * *	For Export
39	Fluorescent Lamp Bracket	EG 0 8 1 7 0 0 0 0 0 0	
40	Fluorescent Lamp	E F 7 4 0 1 0 0 * * * *	For Japan
40	Fluorescent Lamp	MD 7 4 0 1 0 0 * * * *	For Export
41	Fluorescent Lamp Stand Pipe	E F 0 8 1 2 0 A * * * *	
42	Fluorescent Lamp Pipe Support	E F 0 8 1 3 0 0 0 0 0 0	
43	Fluorescent Lamp Pipe Base D	E F 0 8 1 1 D A 0 0 0 0	L=85mm
43	Fluorescent Lamp Pipe Base E	E F 0 8 1 1 E A 0 0 0 0	L=165mm

Note: As for parts with marks # or *, please follow our instructions on Table of Contents in your parts order.

(BH01)

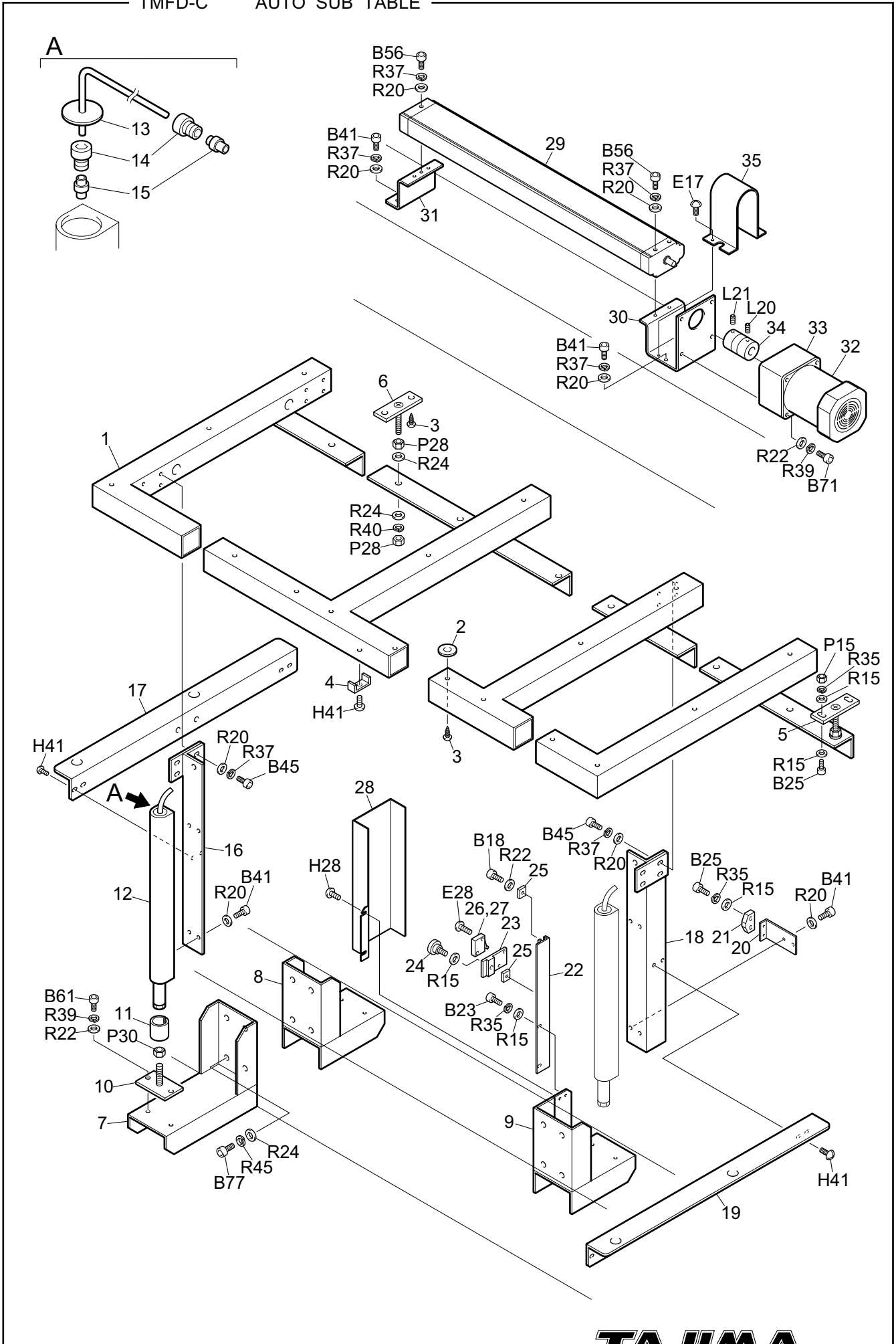


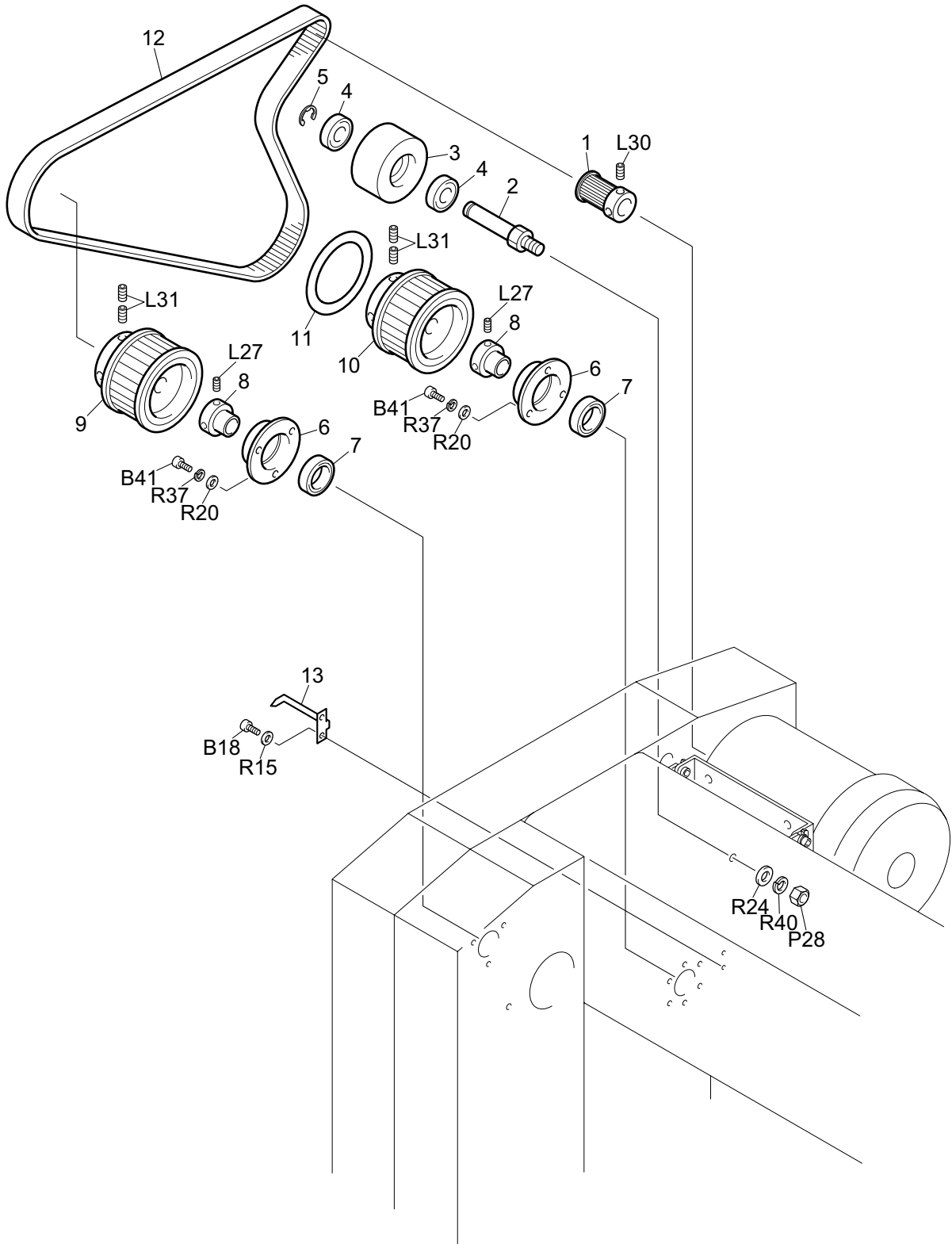
TMFD-C TABLE

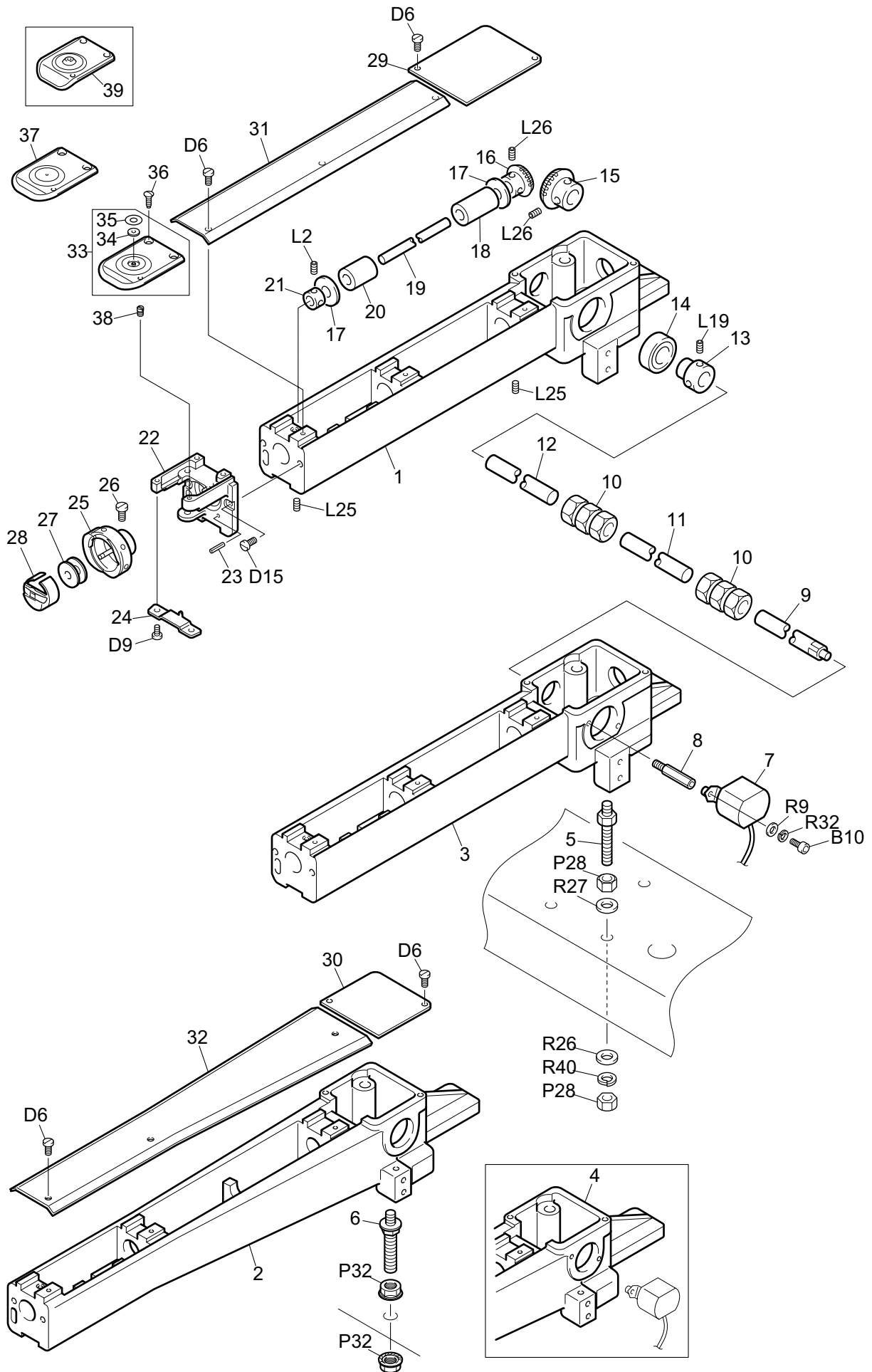
DC-2-1

Ref. No.	Description	Part No.	Remark
1	Table	DC 0 8 2 3 0 1 * * * * *	
1	Table	DC G 8 2 3 0 1 * * * * *	G-Spec.M/C only
2	Front Rail Holder A	XC 0 7 0 9 A 1 * * * * *	
3	Front Rail Holder B	XC 0 7 0 9 B 0 * * * * *	
4	No.1 Table Lid A	EN 0 8 5 4 A 0 * * * * *	
5	No.1 Table Lid C	EN 0 8 5 4 C 0 * * * * *	
6	Countersunk Head Wood Screw		3.1P*12,3.1P*16
7	Grommet	B P M G 0 9 0 0 * * * * *	
8	Round Head Wood Screw		4.5P*20
9	Table Lid Stud Bolt	FC 0 8 0 6 0 0 0 0 0 0	
10	Left Side Front Table Stopper	FC 0 5 1 9 0 1 0 0 0 0	
11	Bearing Stopper	FC 0 8 4 1 0 0 0 0 3 T	Right side
12	Bearing Stopper	FC 0 8 4 1 0 0 0 0 6 T	
13	No.2 Table Lid A	DC 0 8 0 5 A 1 * * * * *	
14	No.2 Table Lid B	DC 0 8 0 5 B 1 * * * * *	
15	Toggle Clamp	B P G Y 1 0 0 0 0 0 0 0	
16	Anti-vibration Plate	XC 0 5 2 6 0 1 0 0 0 0	
17	Round Head Wood Screw		5.1P*25
18	Bearing Case	FC 0 7 3 3 0 0 0 0 0 0	
19	Roller	FC 0 7 3 4 0 0 0 0 0 0	
20	Roller Pin	FC 0 7 3 5 0 0 0 0 0 0	
21	Encoder Cover	DC 0 8 0 6 0 0 0 0 0 0	
22	Table End Cover A	XC 0 8 2 7 A 0 0 0 0 0	
23	Table End Cover C	XC 0 8 2 7 C 0 0 0 0 0	
24	Stand Front Cover A	XC 0 8 2 2 A A * * * * *	Y-Space 450mm
24	Stand Front Cover A	DC 0 8 1 6 A A * * * * *	Y-Space 550mm
25	Stand Front Cover B	XC 0 8 2 2 B A * * * * *	Y-Space 450mm
25	Stand Front Cover B	DC 0 8 1 6 B A * * * * *	Y-Space 550mm
26	Stand Front Cover C	XC 0 8 2 2 C A * * * * *	Y-Space 450mm
26	Stand Front Cover C	DC 0 8 1 6 C A * * * * *	Y-Space 550mm
27	Stand Front Cover D	XC 0 8 2 2 D A * * * * *	Y-Space 450mm
27	Stand Front Cover D	DC 0 8 1 6 D A * * * * *	Y-Space 550mm
28	Stand Front Cover E	XC 0 8 2 2 E A * * * * *	Y-Space 450mm
28	Stand Front Cover E	DC 0 8 1 6 E A * * * * *	Y-Space 550mm
29	Stand Front Cover F	XC 0 8 2 2 F A * * * * *	Y-Space 450mm
29	Stand Front Cover F	DC 0 8 1 6 F A * * * * *	Y-Space 550mm
30	Stand Front Cover G	XC 0 8 2 2 G B * * * * *	Y-Space 450mm
30	Stand Front Cover G	DC 0 8 1 6 G A * * * * *	Y-Space 550mm
31	Joint Cover	ED 0 8 1 5 0 0 0 0 0 0	
32	Table Aligning Sub Plate	TC 0 1 0 2 0 0 0 0 0 0	
33	Table Guide Plate	FC 0 5 1 5 0 2 0 0 0 0	
34	Anti-bend Base	FC 0 7 1 1 0 0 0 0 0 0	
35	Bearing Case	EF 0 7 2 0 0 2 0 0 0 0	
36	Roller	EF 0 7 2 2 0 0 0 0 0 0	
37	Roller Pin	EF 0 7 2 3 0 1 0 0 0 0	

Note: As for parts with marks # or *, please follow our instructions on Table of Contents in your parts order. (BH01)







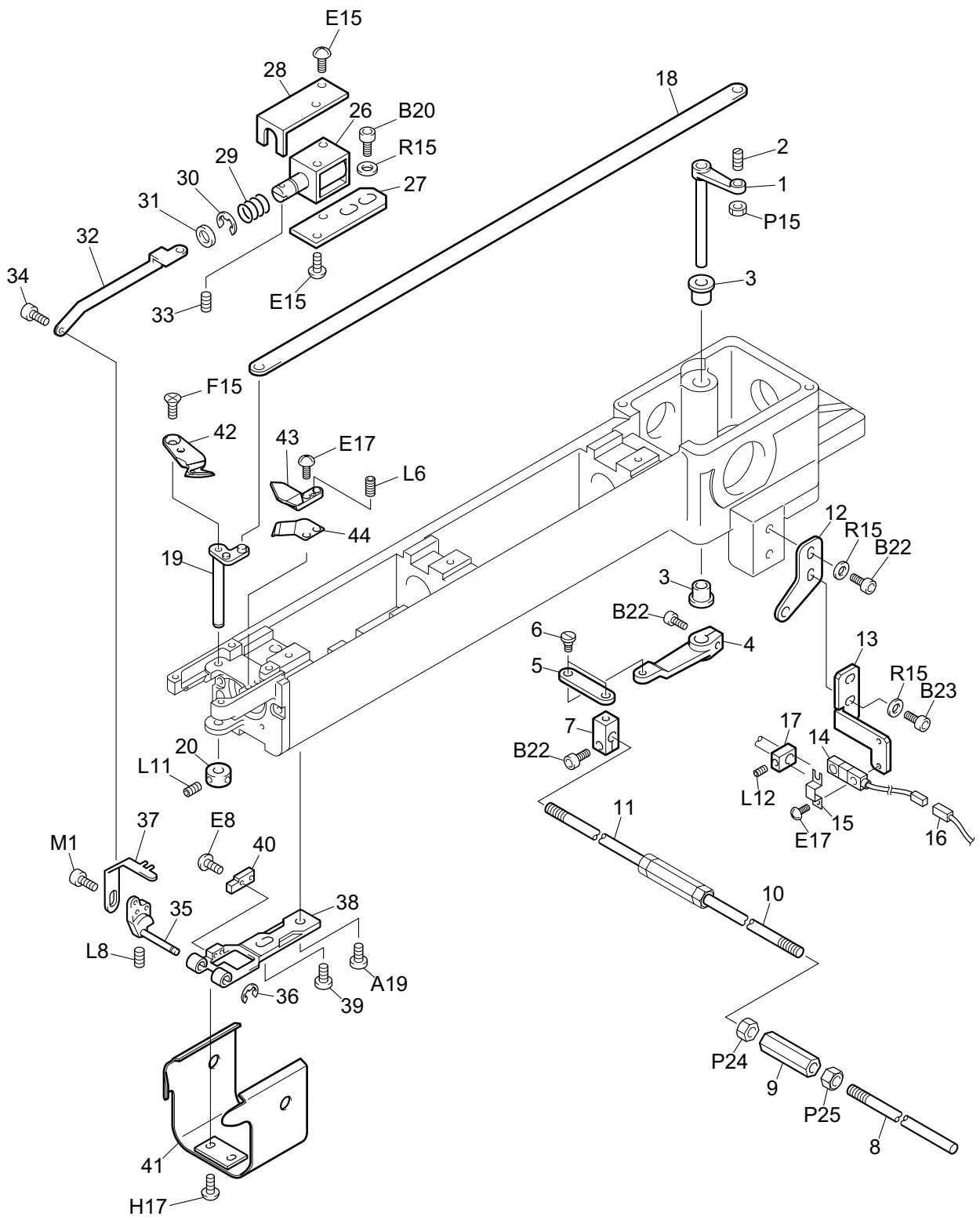
TMFD-C CYLINDER BED 1

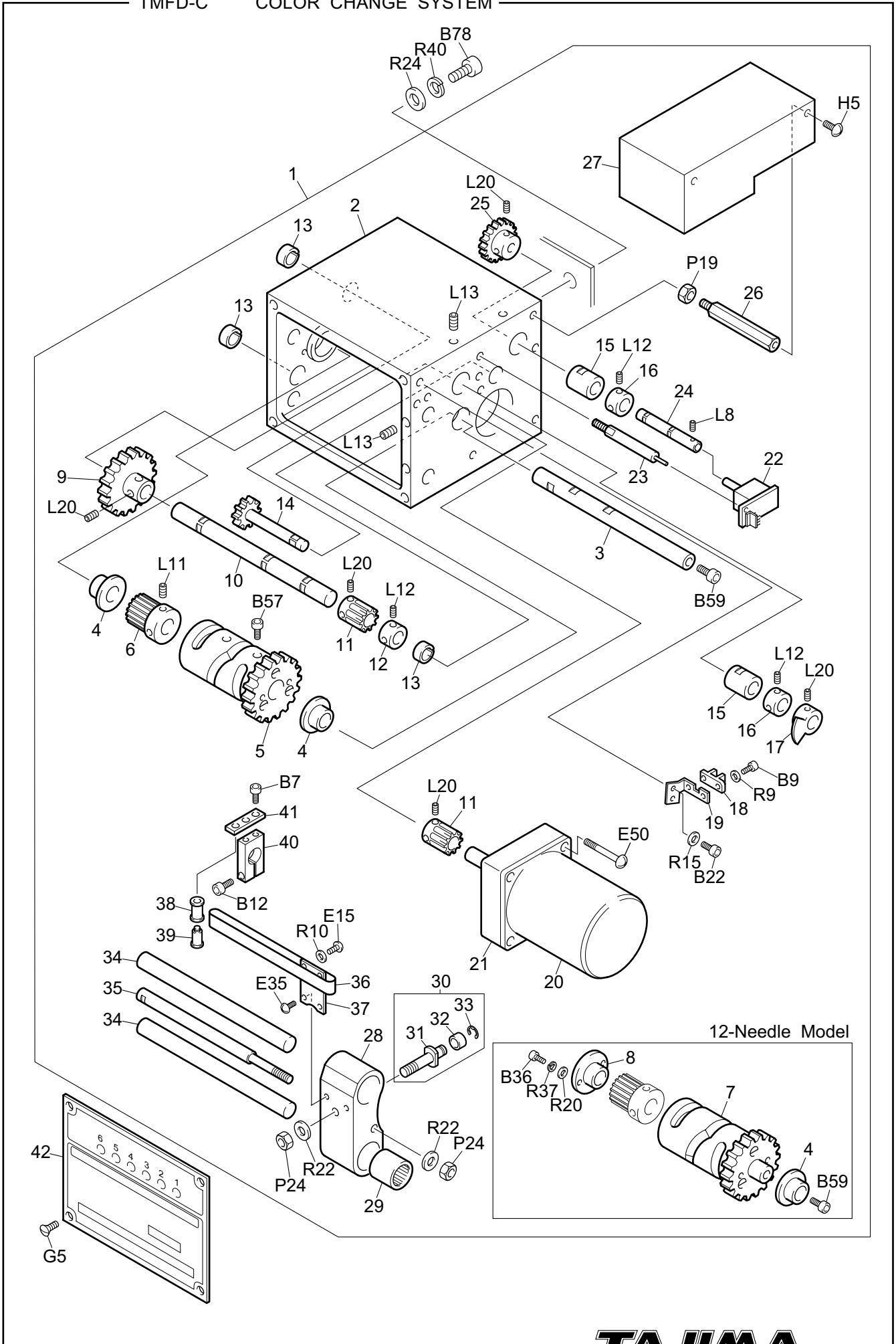
DC-4-1

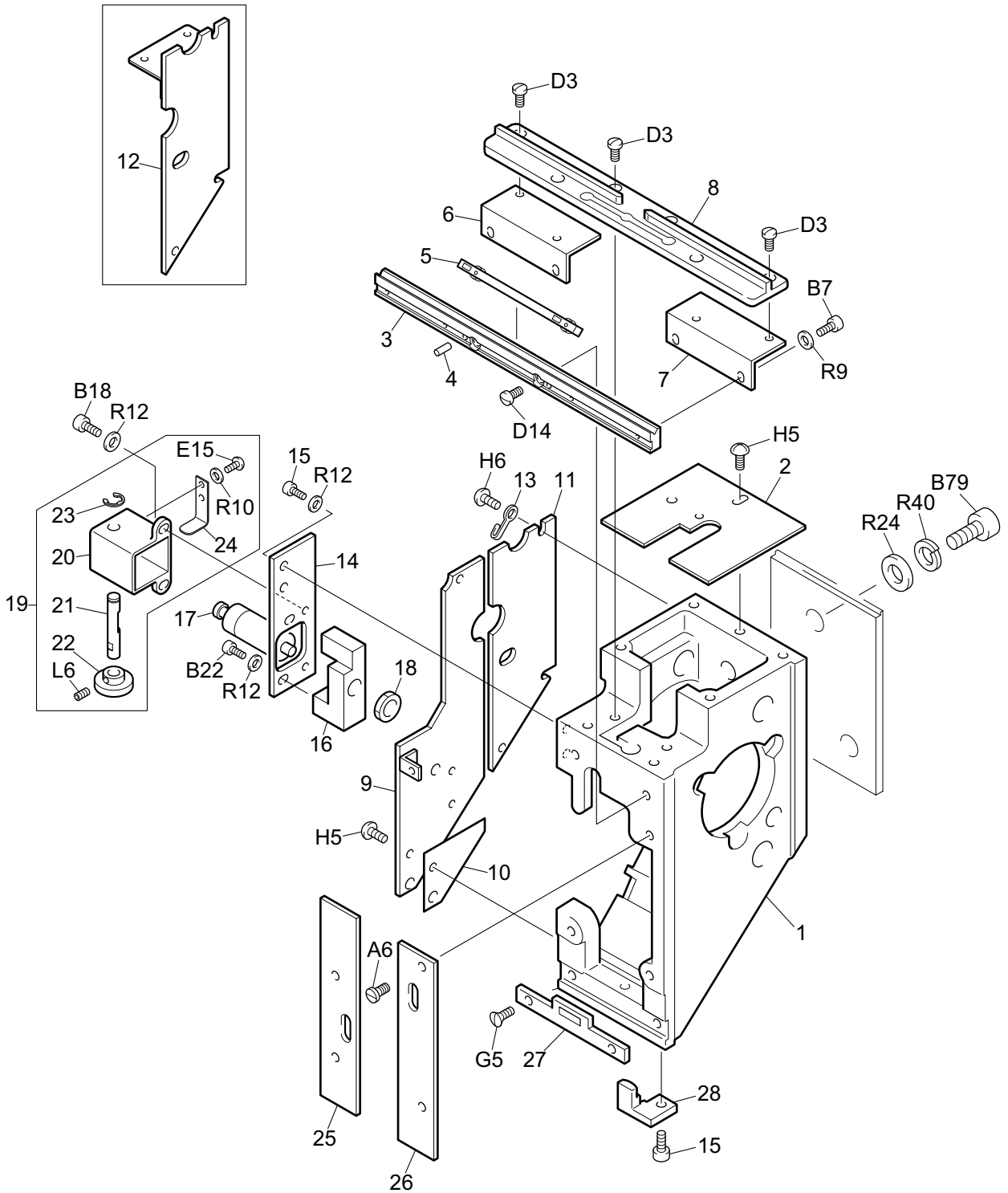
Ref. No.	Description	Part No.	Remark
1	Cylinder Bed A	F C 0 2 0 1 A A 0 0 0 0	Y-Space 450mm
1	Cylinder Bed A	F C C 2 0 1 A A 0 0 0 0	Y-space 450mm with Jumbo Hook
2	Cylinder Bed A	D C 0 2 0 1 A B 0 0 0 0	Y-Space 550mm
2	Cylinder Bed A	D C C 2 0 1 A B 0 0 0 0	Y-space 550mm with Jumbo Hook
3	Cylinder Bed B	F C 0 2 0 1 B A 0 0 0 0	Y-Space 450mm
3	Cylinder Bed B	F C C 2 0 1 B A 0 0 0 0	Y-space 450mm with Jumbo Hook
4	Cylinder Bed B	D C 0 2 0 1 B B 0 0 0 0	Y-Space 550mm
4	Cylinder Bed B	D C C 2 0 1 B B 0 0 0 0	Y-space 550mm with Jumbo Hook
5	Rotary Hook Base Stud	E F 0 2 0 7 0 0 0 0 0 0	Y-Space 450mm
6	Rotary Hook Base Stud	D C 0 2 0 2 0 1 0 0 0 0	Y-Space 550mm
7	Rotary Encoder	E F 6 6 0 0 A 0 0 0 0 0	
8	Encoder Stud	C X 0 2 1 2 0 0 0 0 0 0	
9	Rotary Hook Shaft Drive Shaft A	D C 0 8 4 0 A 1 * * * *	
10	N-Coupling	B P N 1 5 0 1 5 0 0 0 0	
11	Rotary Hook Shaft Drive Shaft B	D C 0 8 4 0 B O * * * *	
12	Rotary Hook Shaft Drive Shaft C	D C 0 8 4 0 C 1 * * * *	
13	15mm Dia. Bearing Collar	E G 0 2 2 7 0 0 0 0 0 0	
14	Ball Bearing	B P 6 0 0 3 Z Z 0 0 0 0	
15	Spiral Bevel Gear A	E F 0 2 0 3 0 0 0 0 0 1	
15	Spiral Bevel Gear A	E F 0 2 0 3 B 0 0 0 0 0	For plastic gear
16	Spiral Bevel Gear B	E F 0 2 0 4 0 0 0 0 0 1	
16	Spiral Bevel Gear B	E F 0 2 0 4 0 4 0 0 0 0	For plastic gear
17	Rotary Hook Spacer	E F 0 2 1 1 0 0 0 0 0 0	
18	Oscillating Shaft Bushing, Rear	D C 0 5 0 4 0 1 0 0 0 0	
19	Rotary Hook Shaft	F C C 2 2 2 0 0 0 0 0 0	Y-Space 450mm
19	Rotary Hook Shaft	D C 0 2 0 6 0 0 0 0 0 0	Y-Space 550mm
20	Rotary Hook Shaft Bushing B	E F 0 2 0 6 B 0 0 0 0 0	
21	7.94mm Dia. Collar	E F 0 2 0 9 0 0 0 0 0 0	
22	Needle Plate Bracket	F C 0 2 0 2 0 2 0 0 0 0	
22	Needle Plate Bracket	F C C 2 0 2 0 3 0 0 0 0	For Jumbo Rotary Hook
23	Spring Pin	B P S P 0 3 1 2 0 0 0 0	3P*12
24	Rotary Hook Support	F C 0 2 2 4 0 0 0 0 0 0	
25	Rotary Hook	M E 0 5 0 5 0 4 0 0 R P	
25	Rotary Hook	M E 0 5 0 5 0 2 * * * *	Plated Rotary Hook
26	Rotary Hook Set Screw	M E 0 5 0 6 0 0 0 0 0 0	
27	Bobbin	M E 0 5 0 4 0 2 * * * *	
28	Bobbin Case	M E 0 5 0 3 0 0 * * * *	
29	Bed Cover A	F C 0 2 1 4 0 1 0 0 0 0	Y-Space 450mm
30	Bed Cover A	D C 0 2 0 3 0 0 0 0 0 0	Y-Space 550mm
31	Bed Cover B	F C 0 2 1 5 0 2 0 0 0 0	Y-Space 450mm
32	Bed Cover B	D C 0 2 0 4 0 1 0 0 0 0	Y-Space 550mm
33	Needle Plate	F C 0 2 0 4 0 2 * * * *	Border & Tubular Goods Frame
34	Needle Plate Hole Collar	E F 0 2 0 2 2 0 0 0 0 0	
35	Needle Plate Hole Seal	E F 0 2 0 2 3 0 0 0 0 0	
36	Round Countersunk Head Screw	E G 0 2 2 8 0 0 0 0 0 0	
37	Needle Plate	F C 1 2 0 4 0 2 * * * *	NR Type Border & Tubular Frame
38	Positioning Pin	F C 0 2 3 1 0 0 0 0 0 0	
39	Needle Plate	E C 0 C 1 9 0 1 0 0 0 0	Cap Frame

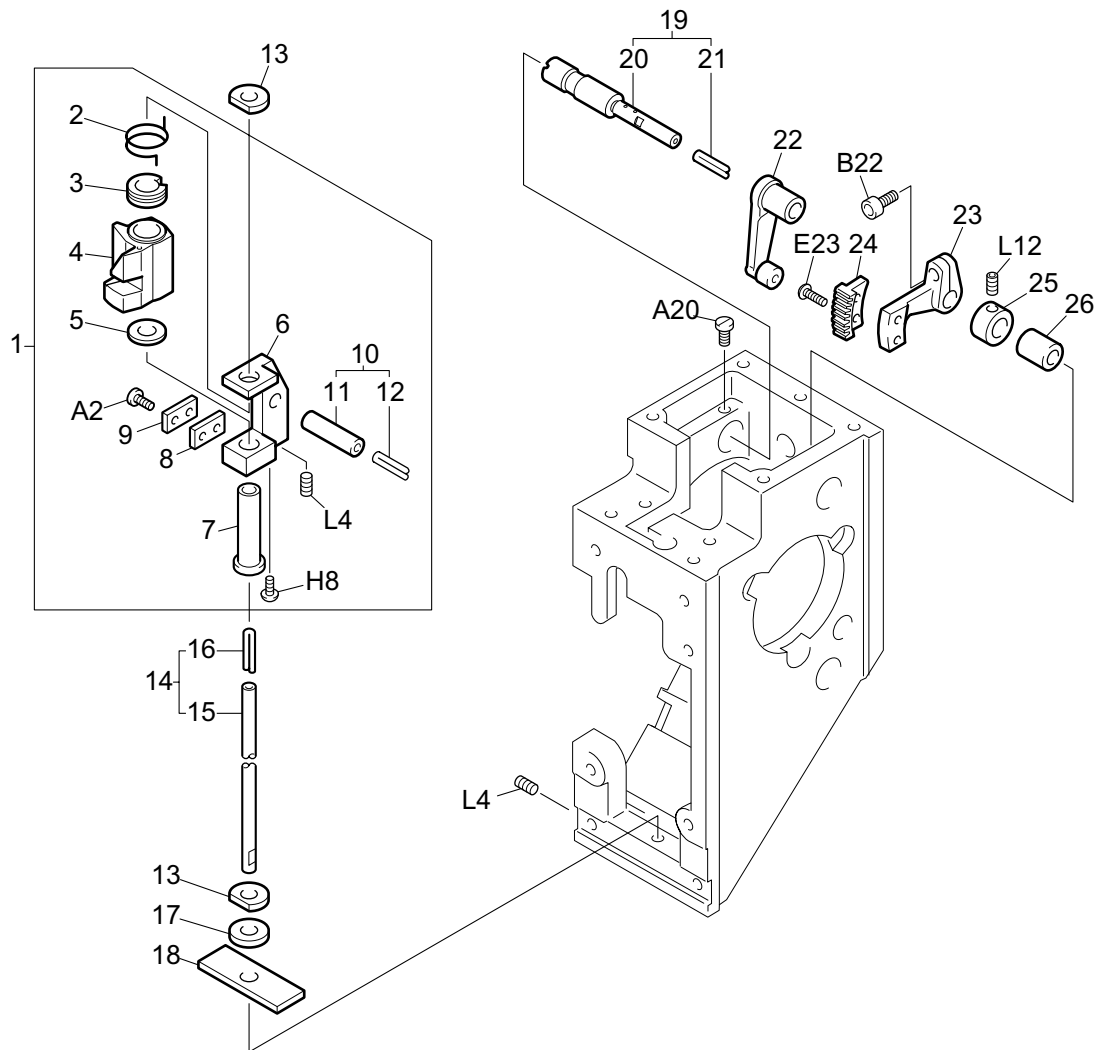
Note: As for parts with marks # or *, please follow our instructions on Table of Contents in your parts order.

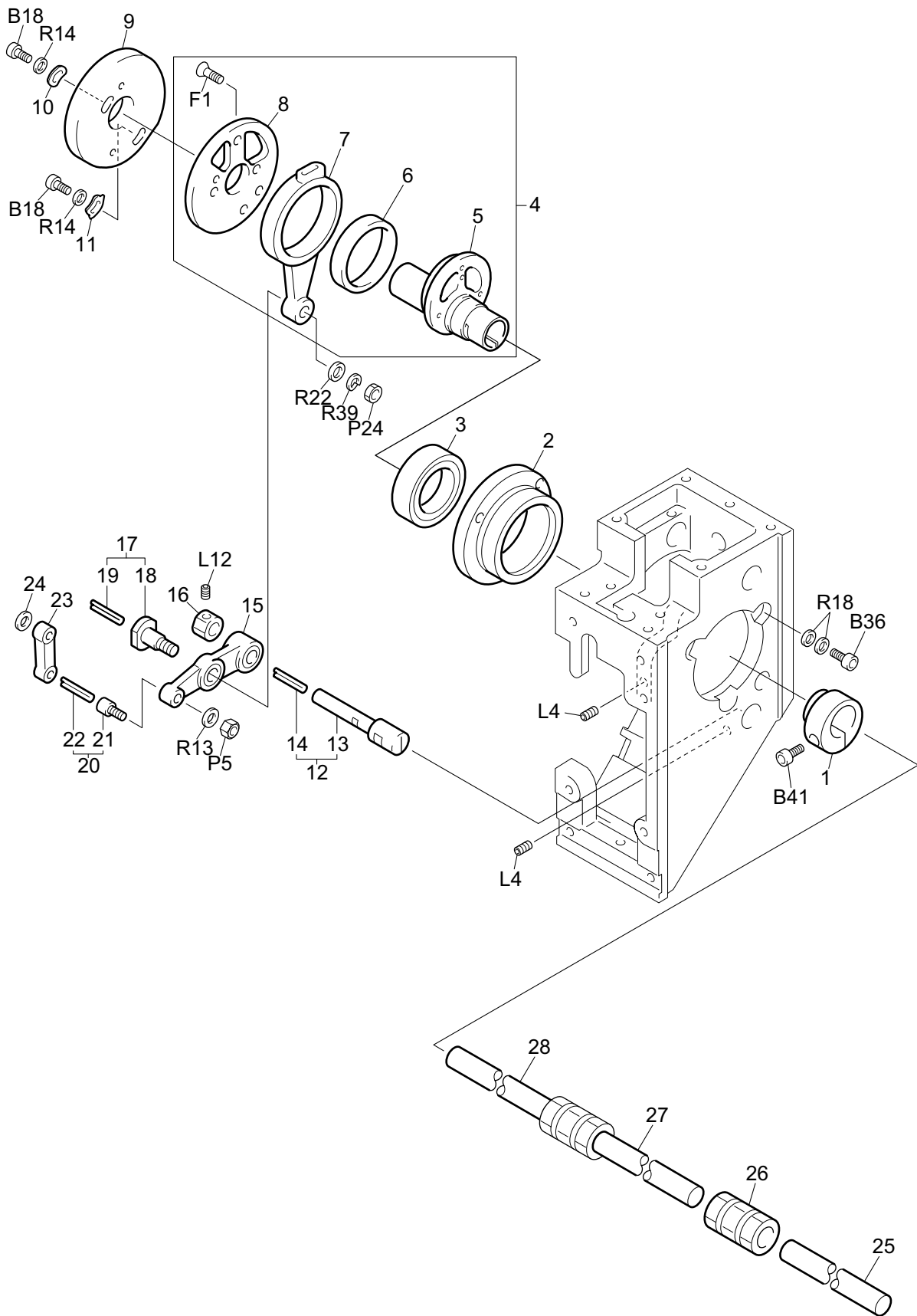
(BH01)

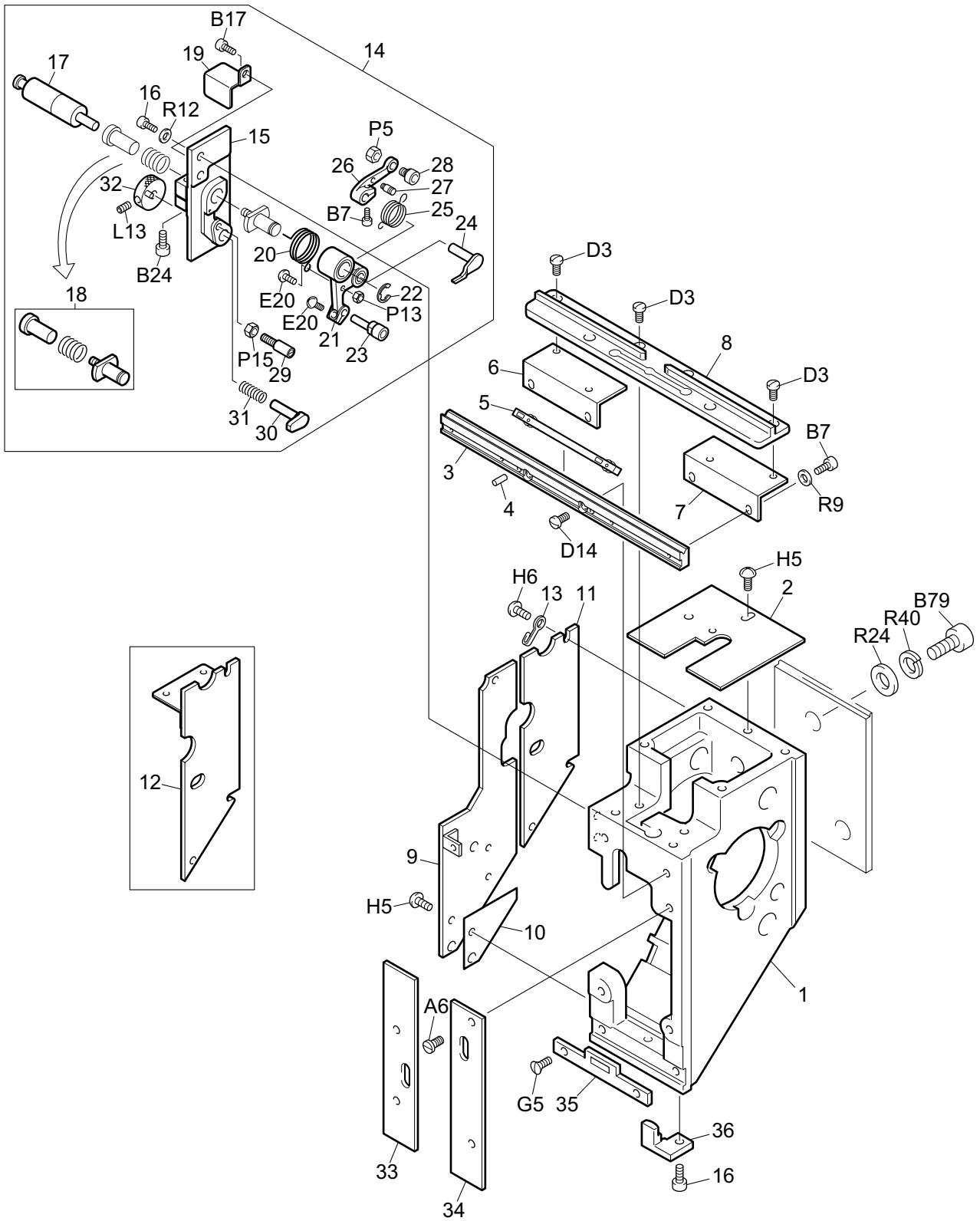


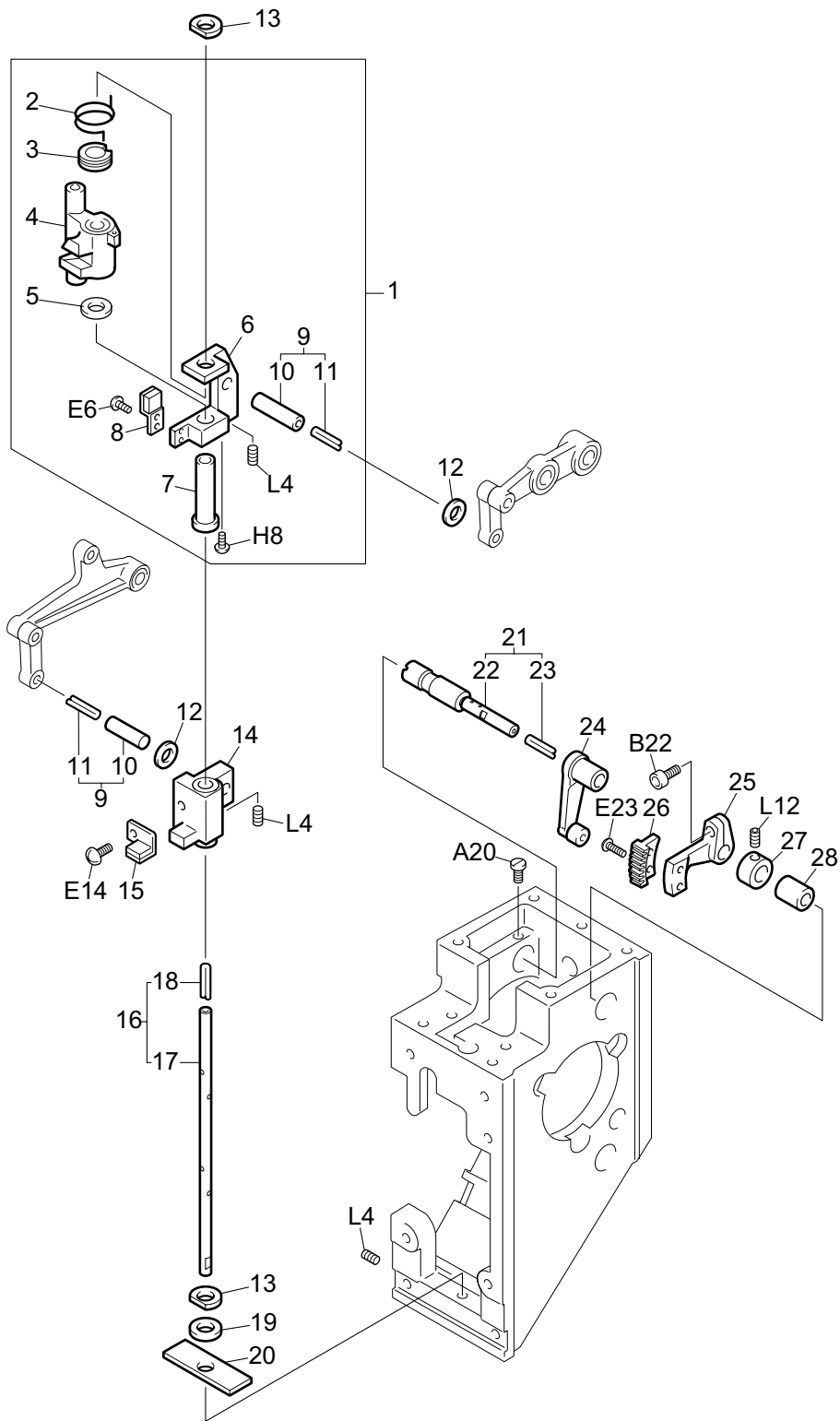


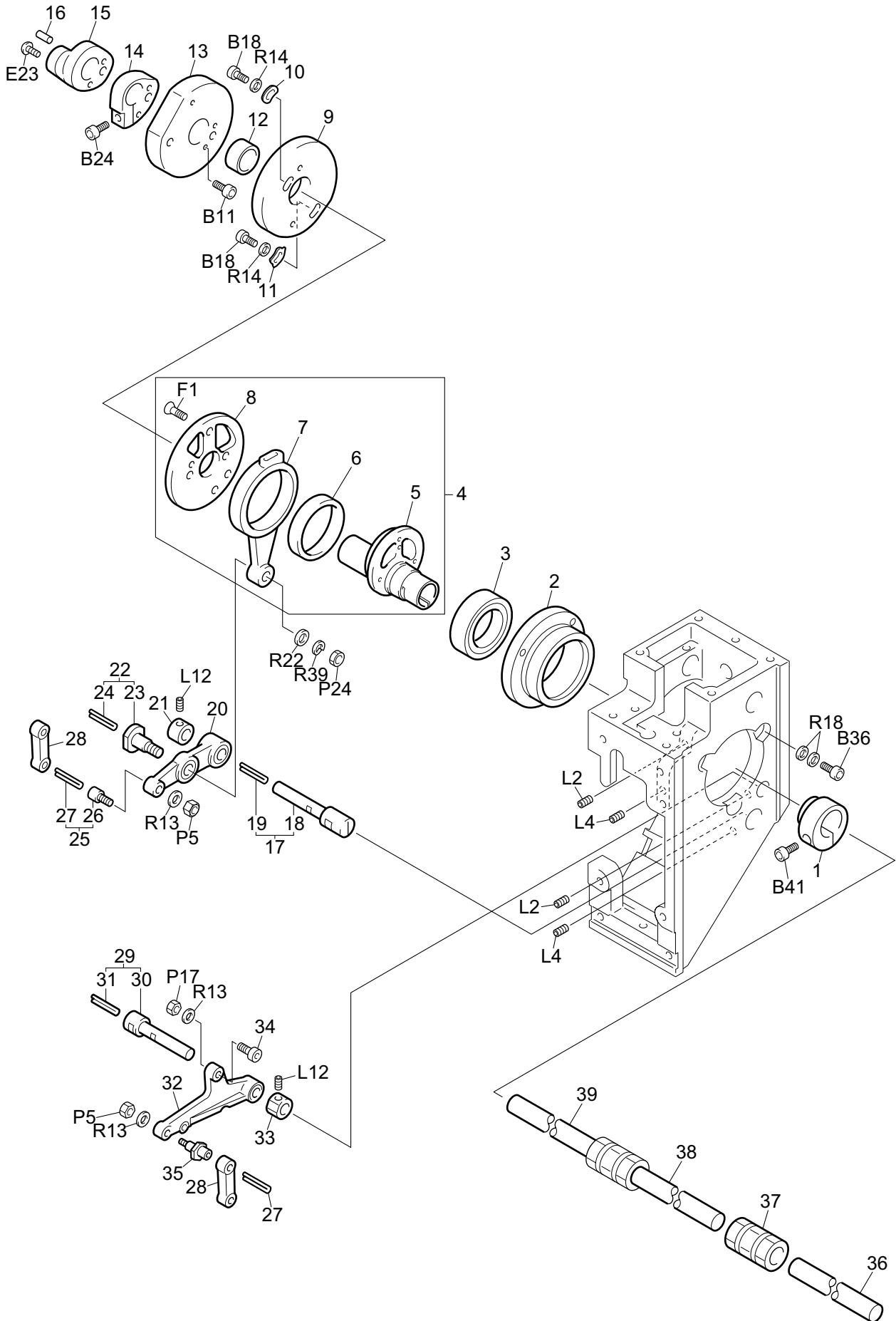


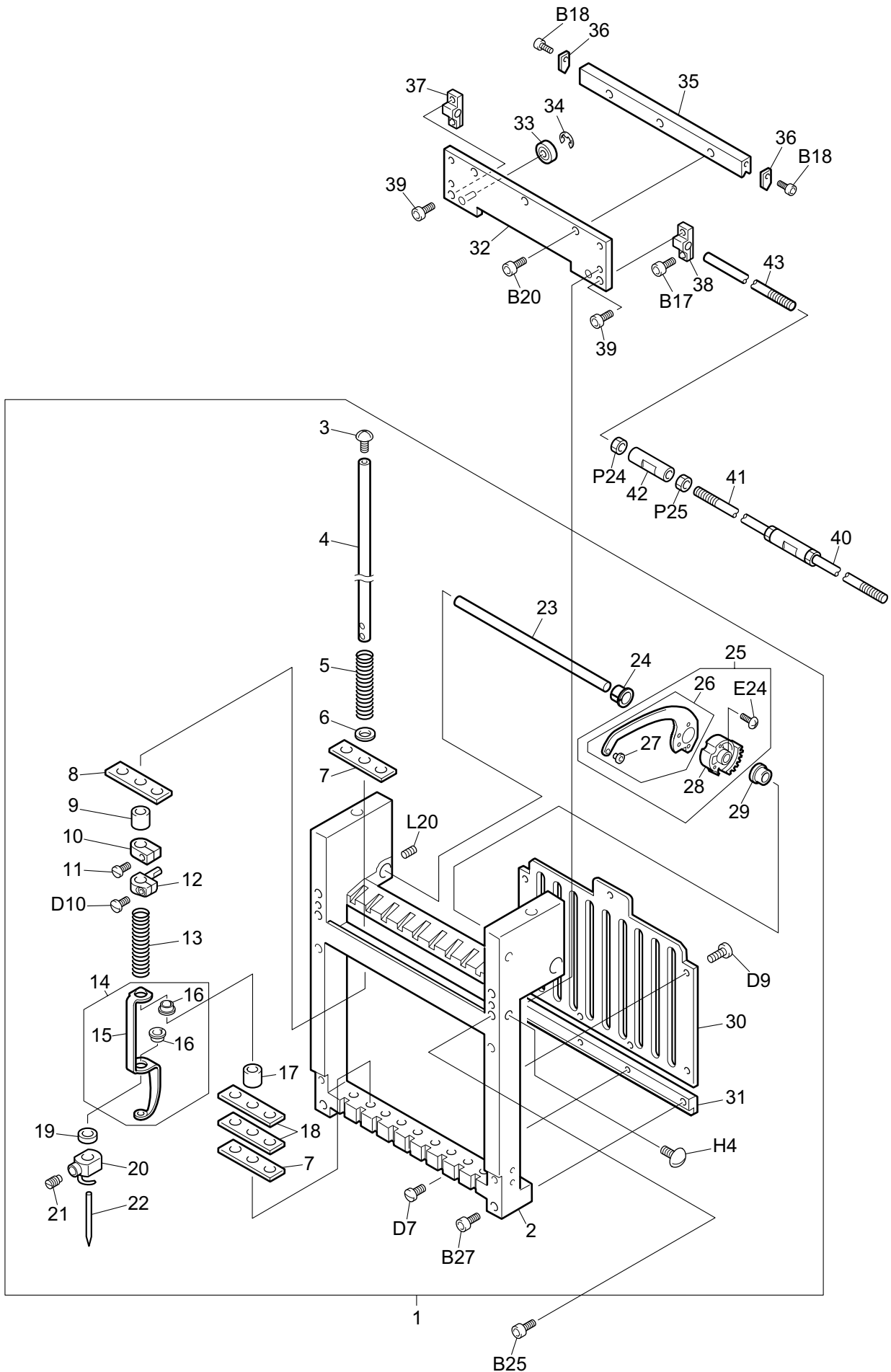












TMFD-C NEEDLE BAR CASE 1

DC-7-1

Ref. No.	Description	Part No.	Remark
1	Needle Bar Case Set	UN 2 6 0 0 3 1 # # # #	
1	Needle Bar Case Set	UN 2 6 C 0 3 1 # # # #	For Jumbo Rotary Hook
2	Needle Bar Case	FX 0 6 0 1 0 A # # # #	
3	Holding Spring Set Screw	EF 0 6 2 0 0 0 0 0 0	
4	Needle Bar	FX 0 6 3 2 0 0 0 0 0	
5	Needle Bar Holder Spring	EF 0 6 1 8 0 3 0 0 0	
6	Spring Shoe Washer	EF 0 6 1 9 0 0 0 0 0	
7	Felt Packing	EF 0 6 2 3 0 0 # # # #	
8	Cushion Rubber B	EF 0 6 2 7 0 0 # # # #	
9	Cushion Ring B	EF 0 6 4 3 0 1 0 0 0	
10	Upper Dead Point Stopper	EF 0 6 1 7 0 1 0 0 0	
11	Flat Fillister Head Screw	EF 0 6 4 7 0 0 0 0 0	
12	Needle Bar Connecting Stud	FX 0 6 1 7 0 0 0 0 0	
13	Presser Foot Spring D	EF 0 6 1 4 D 2 0 0 0	
14	Presser Foot Set	EF 0 6 1 3 0 3 0 0 0	
15	Presser Foot	EF 0 6 1 3 1 3 0 0 0	
16	Presser Foot Bushing	EF 0 6 1 3 2 2 0 0 0	
17	Cushion Ring C	EF 0 6 4 4 0 2 0 0 0	
18	Presser Foot Adjusting Rubber	EF 0 6 2 5 A 0 * * * *	0.5mm Thick
18	Presser Foot Adjusting Rubber	EF 0 6 2 5 B 0 * * * *	1.0mm Thick
19	Cushion Ring A	EF 0 6 4 2 0 2 0 0 0	
20	Needle Clamp	EF 0 6 1 6 0 1 0 0 0	
21	Needle Set Screw	EF 0 6 1 5 0 0 0 0 0	
22	Needle	EF 0 6 4 0 0 0 0 0 0	DB K5-11
23	Take-up Lever Shaft	EF 0 6 0 2 0 0 # # # #	
23	Take-up Lever Shaft	FX 0 6 0 2 0 0 0 0 0	12-Needle
24	Take-up Lever Positioning Bushing	EF 0 6 0 6 0 0 0 0 0	
25	Take-up Lever Gear Set	FX 0 6 0 3 S 1 0 0 0	
25	Take-up Lever Gear Set	FX C 6 0 3 S 1 0 0 0	For Jumbo Rotary Hook
26	Take-up Lever	FX 0 6 0 3 0 1 0 0 0	
26	Take-up Lever	FX C 6 0 3 0 1 0 0 0	For Jumbo Rotary Hook
27	Thread Guide	MX 0 5 2 1 0 0 0 0 0	
28	Take-up Lever Gear	EF 0 6 0 3 0 1 0 0 0	
29	Take-up Lever Adjusting Bushing	EF 0 6 0 5 0 0 0 0 0	
30	Needle Bar Guide Rail	FX 0 6 1 3 0 2 # # # #	
31	Case Rail, Lower	FX 0 6 1 2 0 0 # # # #	
32	Guide Roller Base	FX 0 6 0 7 0 0 # # # #	
33	Ball Bearing	B P R 1 3 4 0 Z Z 0 0	
34	E-ring	B P E 3 0 0 0 0 0 0 0	
35	Case Rail, Upper	FX 0 6 0 6 0 2 # # # #	
36	Roller Stopper	FX 0 6 3 5 0 0 0 0 0	
37	Color Change Bracket L	FX 0 6 0 9 L 0 0 0 0	
38	Color Change Bracket R	FX 0 6 0 9 R 0 0 0 0	
39	Change Bracket Set Screw	FX 0 6 1 1 0 0 0 0 0	
40	Slide Shaft A	FC 0 8 1 2 A 0 * * * *	
41	Slide Shaft B	FC 0 8 1 2 B 0 * * * *	
42	M6 Joint	EF 0 8 2 7 0 1 0 0 0	
43	Slide Shaft C	FC 0 8 1 2 C 0 * * * *	

Note: As for parts with marks # or *, please follow our instructions on Table of Contents in your parts order.

(BH01)

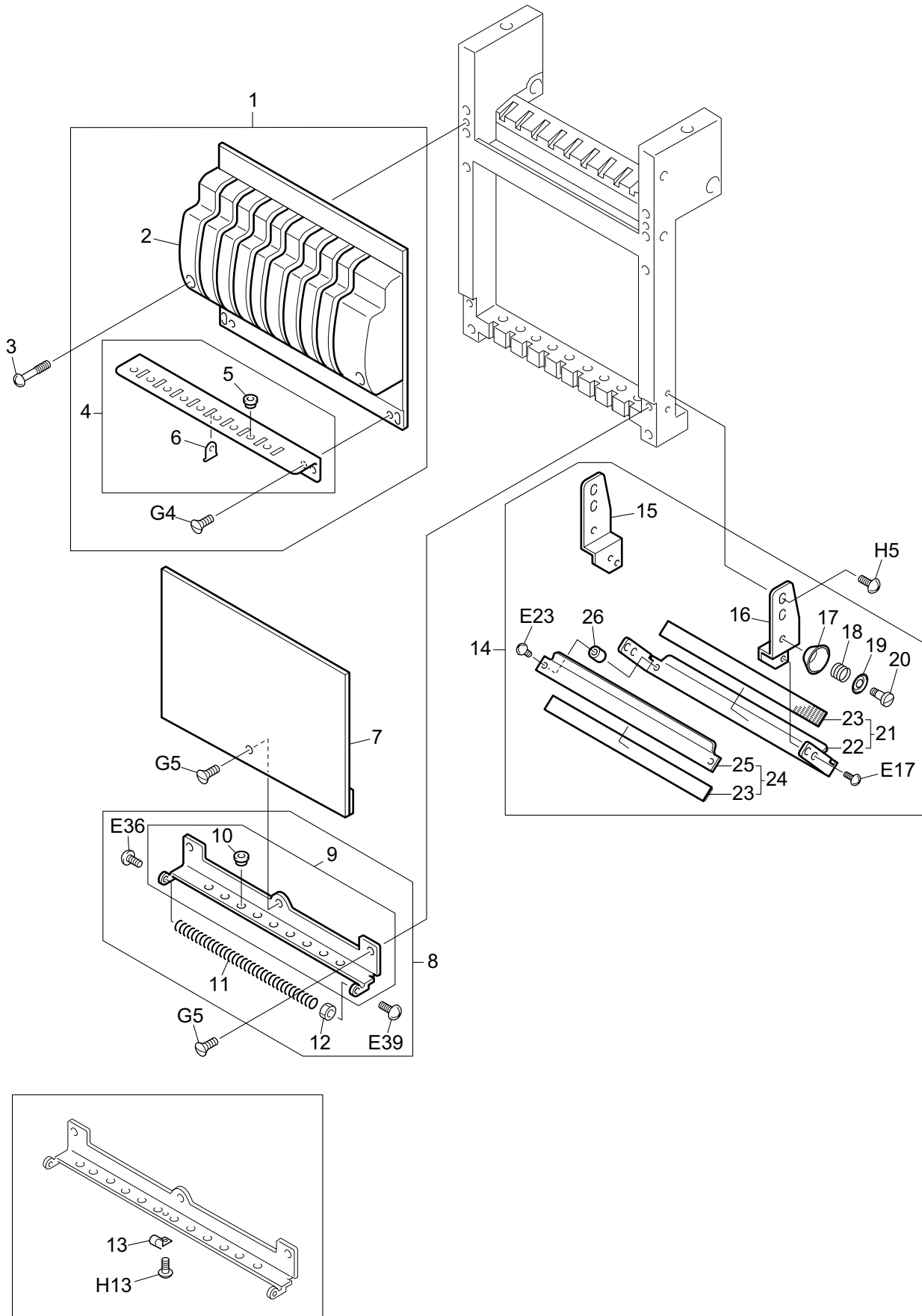
TMFD-C NEEDLE BAR CASE 1 (NR TYPE)

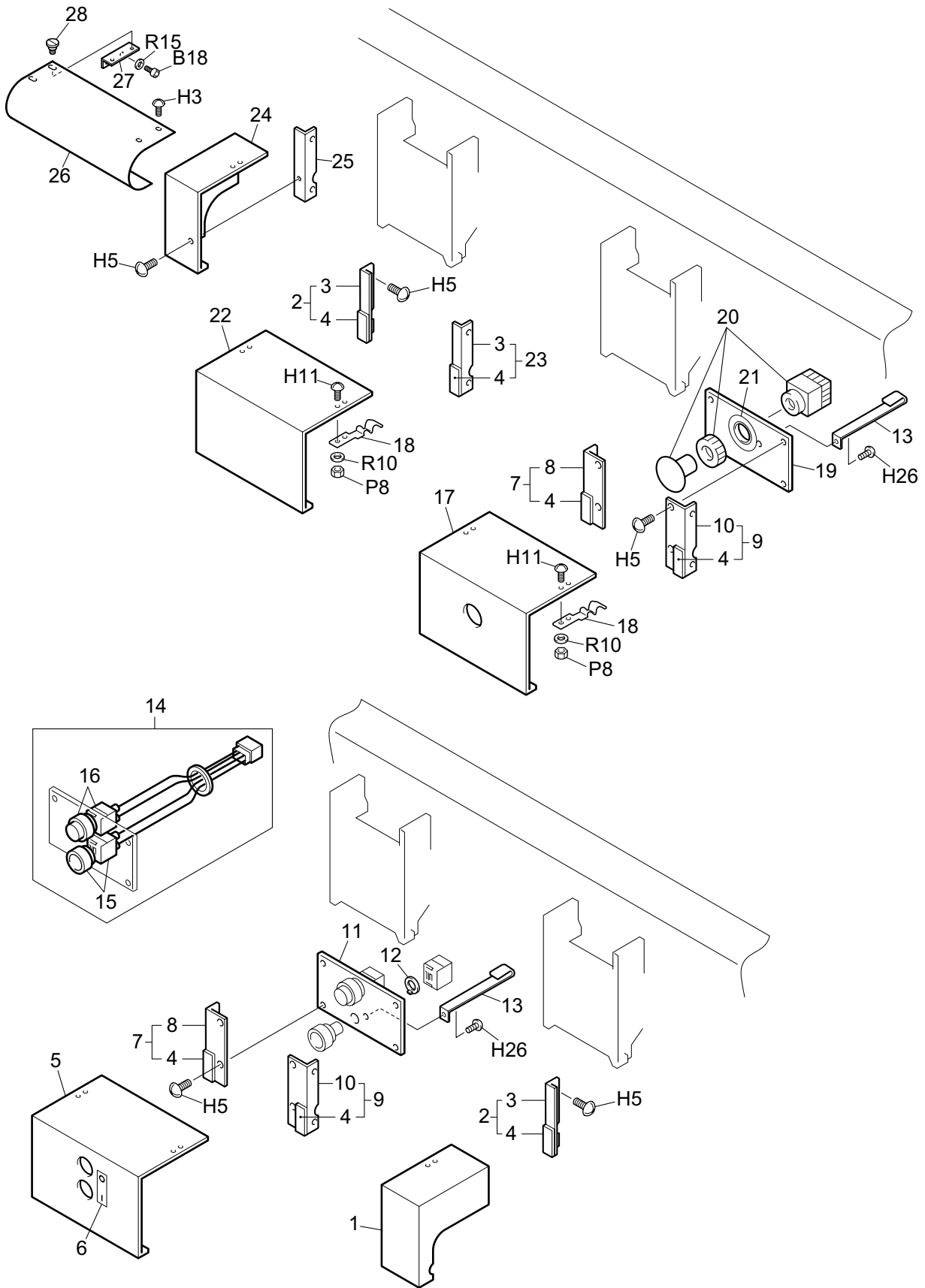
DCN-7-1

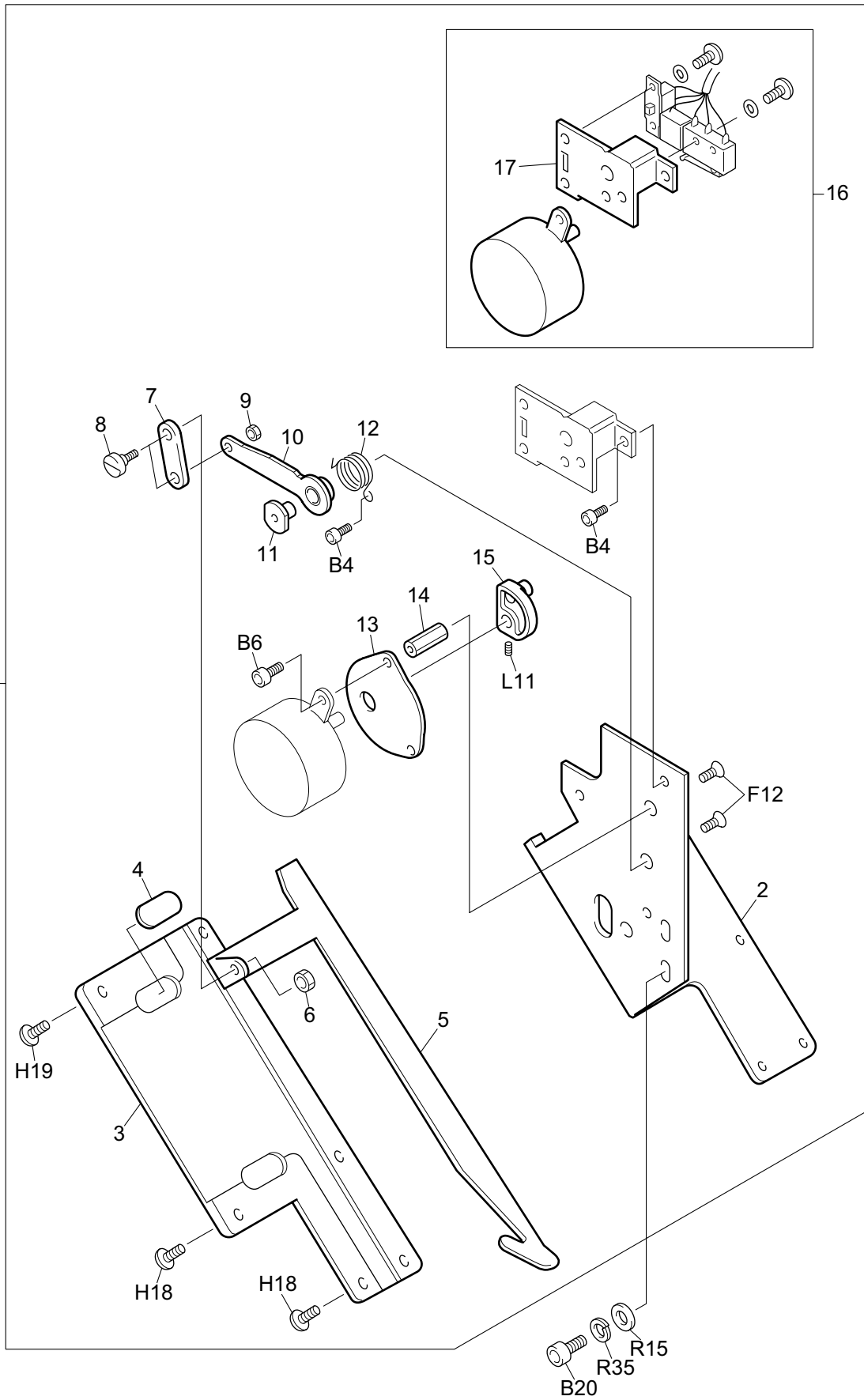
Ref. No.	Description	Part No.	Remark
1	Needle Bar Case Set	UN 2 6 0 0 4 1 # # # #	
1	Needle Bar Case Set	UN 2 6 C 0 4 1 # # # #	For Jumbo Rotary Hook
2	Needle Bar Case	FX 0 6 0 1 0 A # # # #	
3	Holding Spring Set Screw	EF 0 6 2 0 0 0 0 0 0	
4	Needle Bar	FX 0 6 3 2 0 0 0 0 0	
5	Needle Bar Holder Spring	FX 0 6 4 3 0 1 0 0 0	
6	Spring Shoe Washer	EF 0 6 1 9 0 0 0 0 0	
7	Felt Packing	EF 0 6 2 3 0 0 # # # #	
8	Cushion Rubber B	EF 0 6 2 7 0 0 # # # #	
9	Cushion Ring F	FX 0 6 1 6 0 1 0 0 0	
10	Cushion Ring E	FX 0 6 1 5 0 0 0 0 0	
11	Upper Dead Point Stopper	EF 0 6 1 7 0 1 0 0 0	
12	Flat Fillister Head Screw	EF 0 6 4 7 0 0 0 0 0	
13	Needle Bar Connecting Stud	FX 0 6 1 7 0 0 0 0 0	
14	Presser Foot Spring Holder	FX 0 6 1 8 0 1 0 0 0	
15	Presser Foot Spring D	FX 0 6 1 9 D 1 0 0 0	
16	Presser Foot Connecting Stud	FX 0 6 2 1 0 1 0 0 0	
17	Presser Foot Set	FX 0 6 2 0 0 0 0 0 0	
18	Presser Foot	FX 0 6 2 0 1 0 0 0 0	
19	Presser Foot Bushing	EF 0 6 1 3 2 2 0 0 0	
20	Presser Foot Set Screw	FX 0 6 2 2 0 0 0 0 0	
21	Cushion Ring A	EF 0 6 4 2 0 2 0 0 0	
22	Needle Clamp	EF 0 6 1 6 0 1 0 0 0	
23	Needle Set Screw	EF 0 6 1 5 0 0 0 0 0	
24	Needle	EF 0 6 4 0 0 0 0 0 0	DB K5-11
25	Take-up Lever Shaft	EF 0 6 0 2 0 0 # # # #	
25	Take-up Lever Shaft	FX 0 6 0 2 0 0 0 0 0	12-Needle
26	Take-up Lever Positioning Bushing	EF 0 6 0 6 0 0 0 0 0	
27	Take-up Lever Gear Set	FX 0 6 0 3 S 1 0 0 0	
27	Take-up Lever Gear Set	FX C 6 0 3 S 1 0 0 0	For Jumbo Rotary Hook
28	Take-up Lever	FX 0 6 0 3 0 1 0 0 0	
28	Take-up Lever	FX C 6 0 3 0 1 0 0 0	For Jumbo Rotary Hook
29	Thread Guide	MX 0 5 2 1 0 0 0 0 0	
30	Take-up Lever Gear	EF 0 6 0 3 0 1 0 0 0	
31	Take-up Lever Adjusting Bushing	EF 0 6 0 5 0 0 0 0 0	
32	Needle Bar Guide Rail	FX 0 6 1 3 0 2 # # # #	
33	Case Rail, Lower	FX 0 6 1 2 0 0 # # # #	
34	Guide Roller Base	FX 0 6 0 7 0 0 # # # #	
35	Ball Bearing	B P R 1 3 4 0 Z Z 0 0	
36	E-ring	B P E 3 0 0 0 0 0 0 0	
37	Case Rail, Upper	FX 0 6 0 6 0 2 # # # #	
38	Roller Stopper	FX 0 6 3 5 0 0 0 0 0	
39	Color Change Bracket L	FX 0 6 0 9 L 0 0 0 0	
40	Color Change Bracket R	FX 0 6 0 9 R 0 0 0 0	
41	Change Bracket Set Screw	FX 0 6 1 1 0 0 0 0 0	
42	Slide Shaft A	FC 0 8 1 2 A 0 * * * *	
43	Slide Shaft B	FC 0 8 1 2 B 0 * * * *	
44	M6 Joint	EF 0 8 2 7 0 1 0 0 0	
45	Slide Shaft C	FC 0 8 1 2 C 0 * * * *	

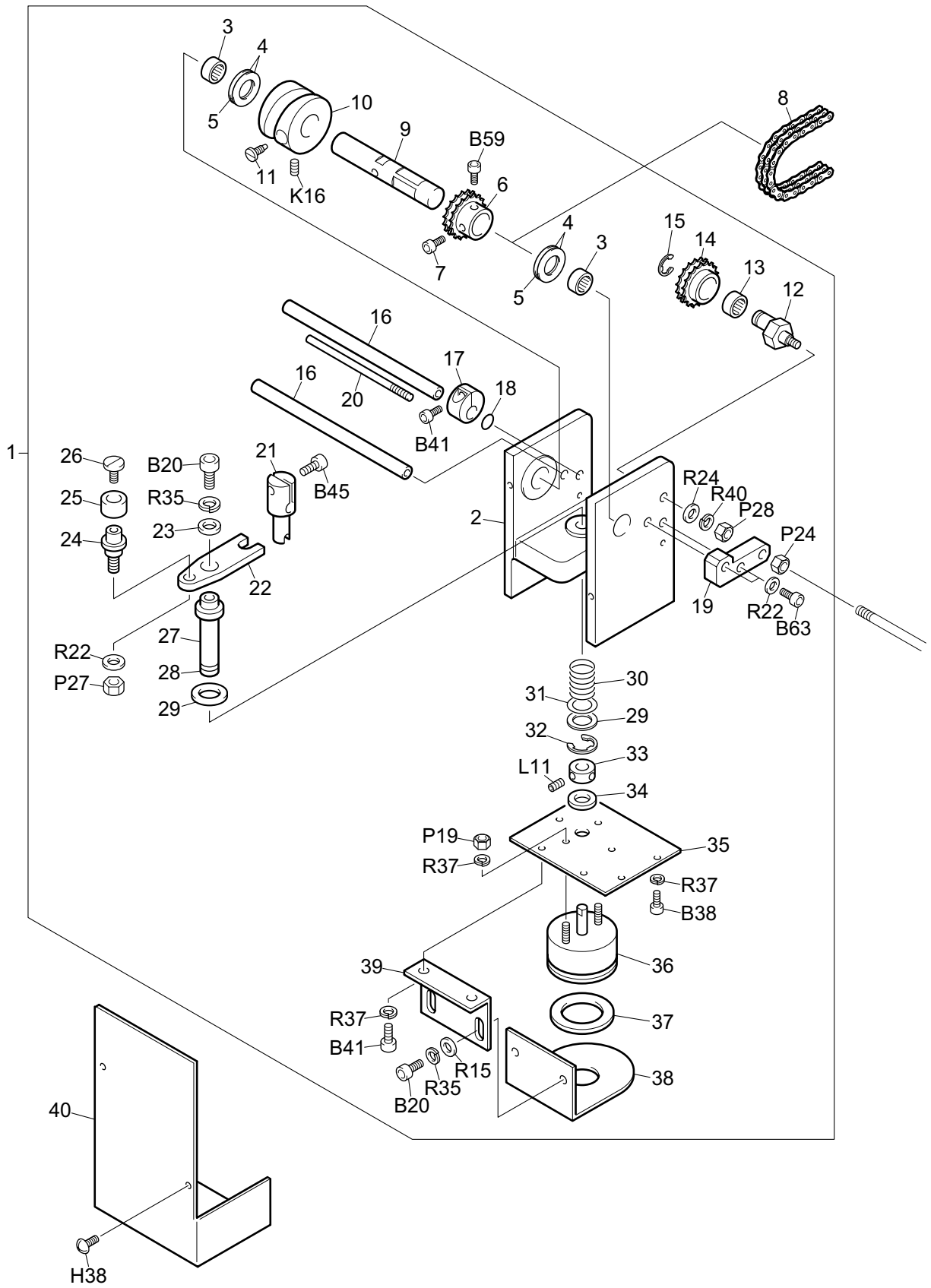
Note: As for parts with marks # or *, please follow our instructions on Table of Contents in your parts order.

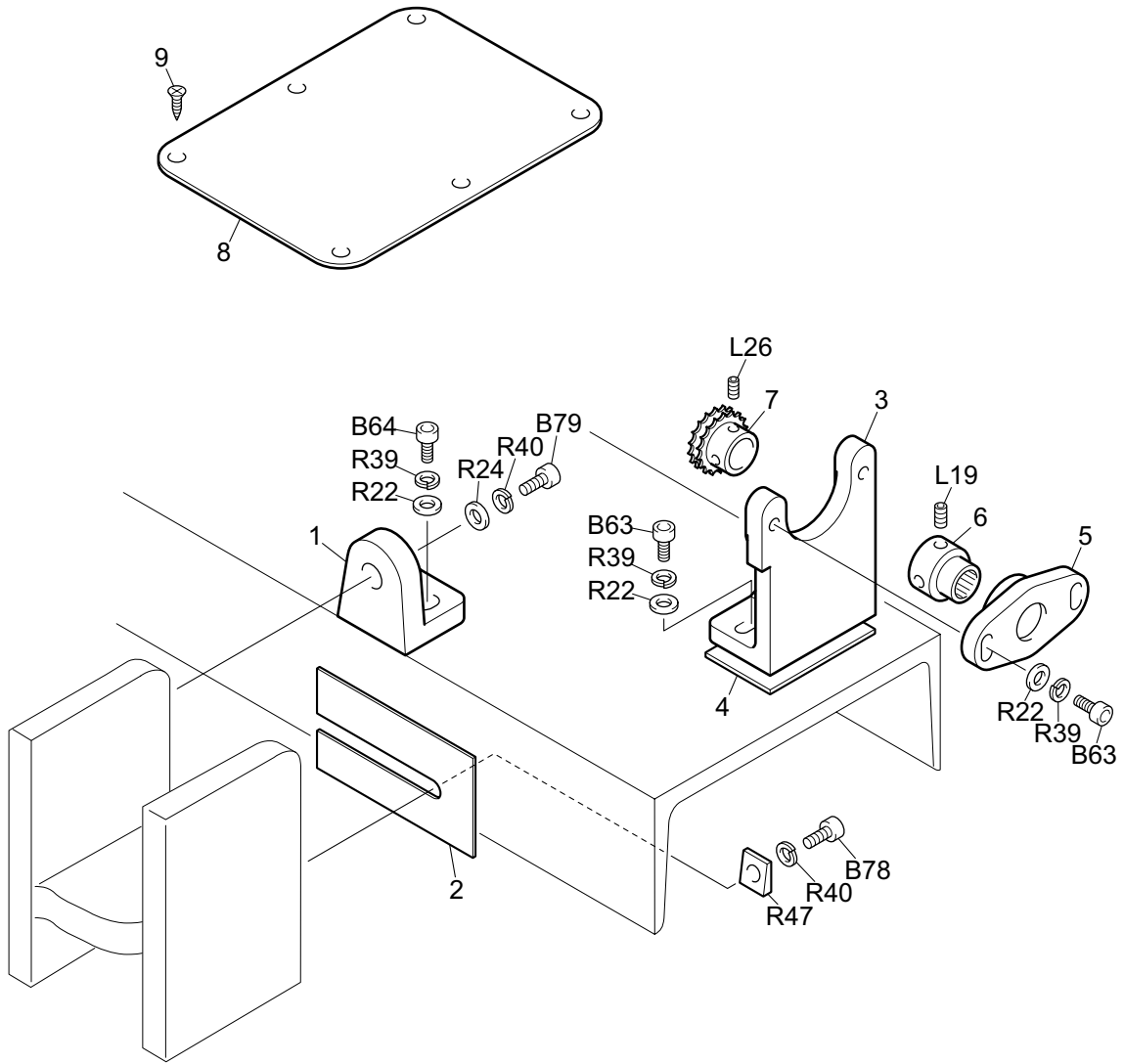
(BH01)

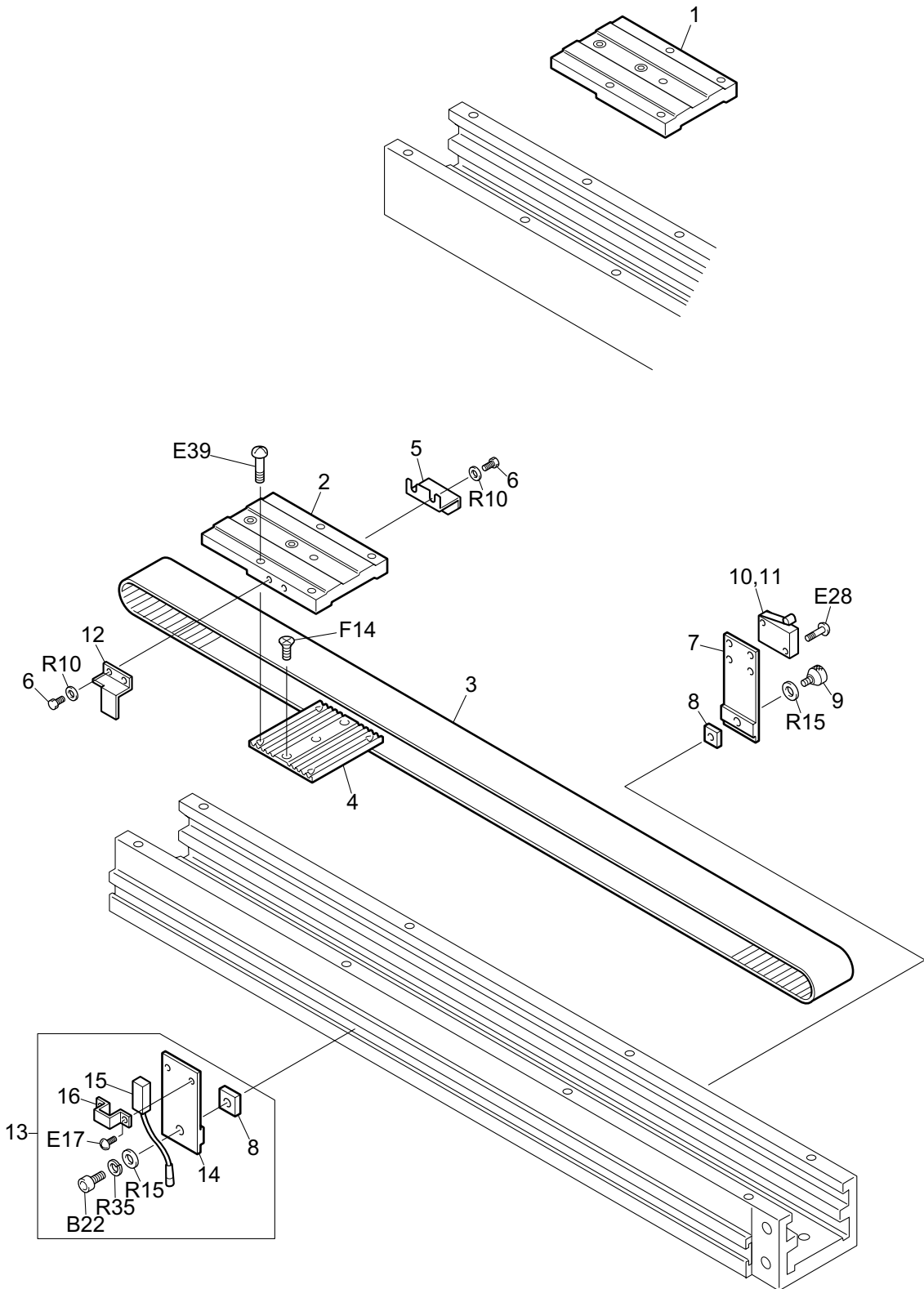


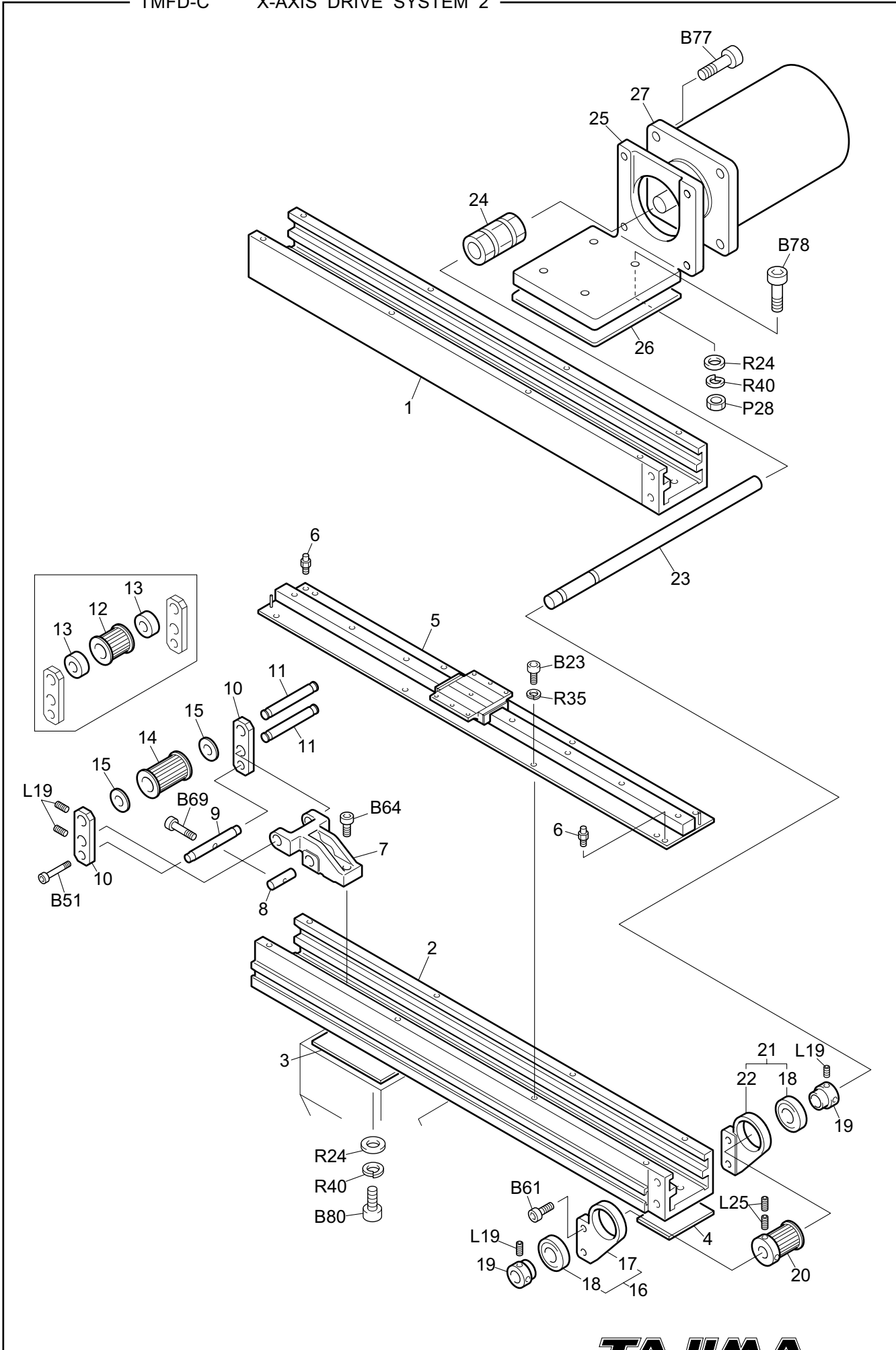


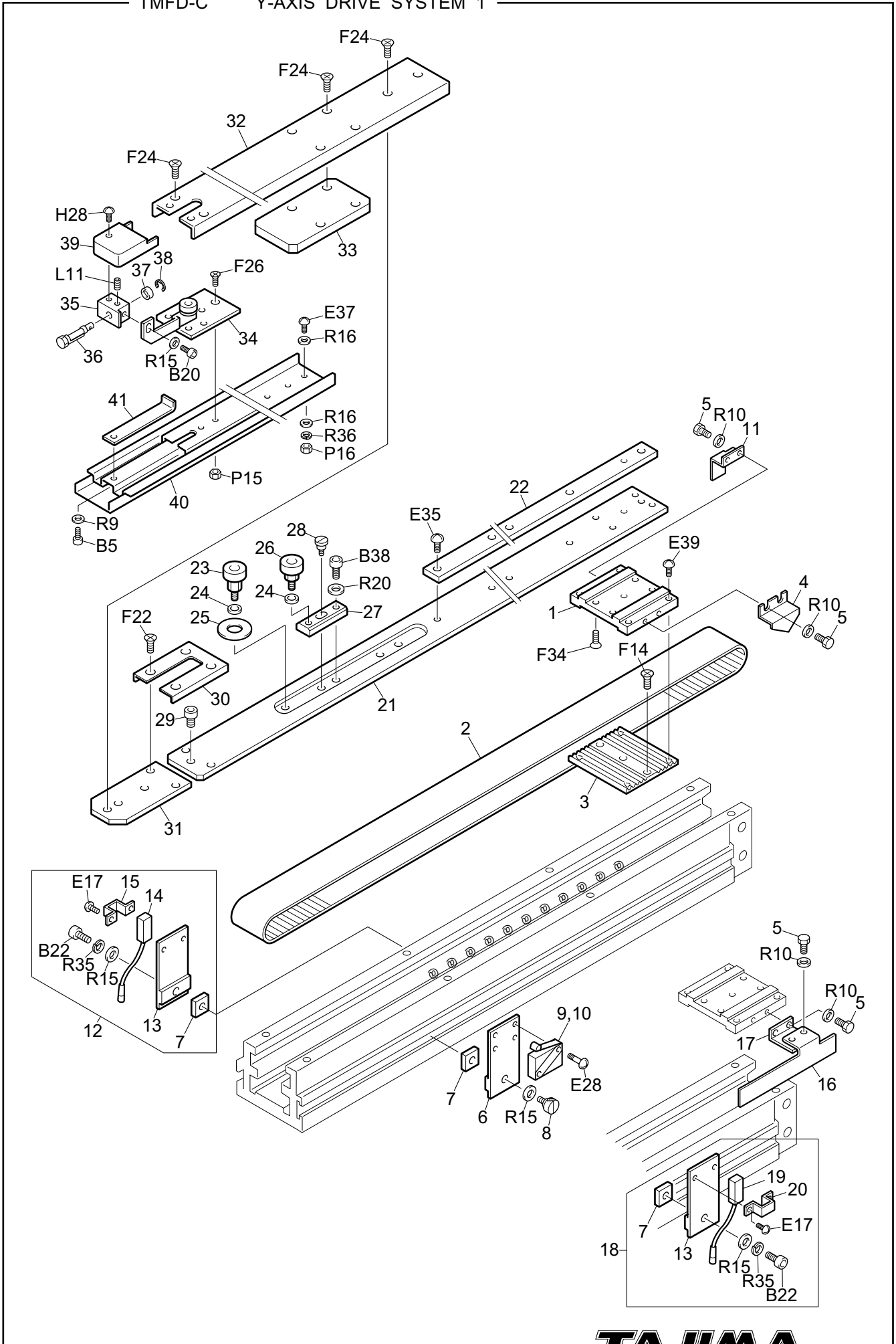


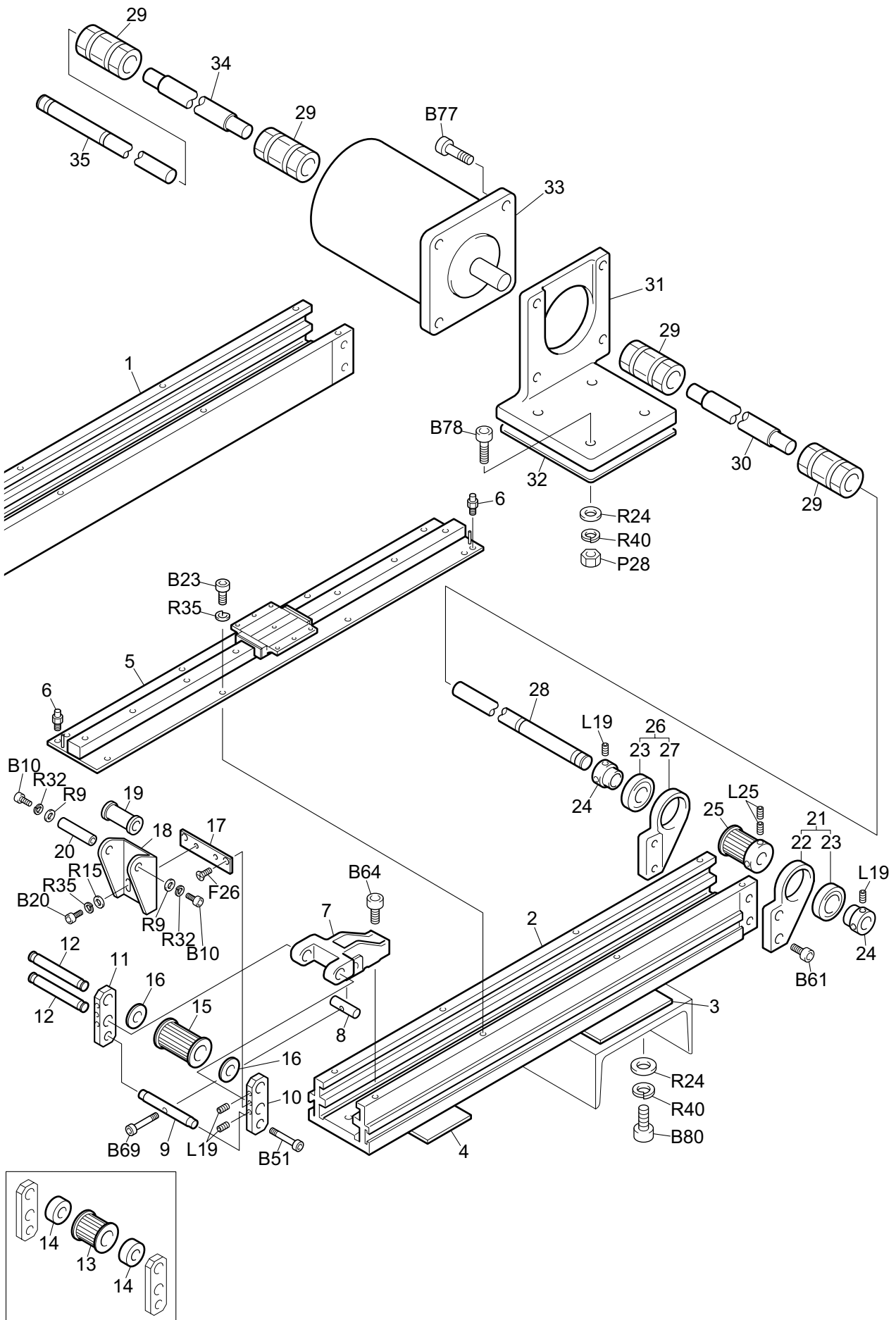


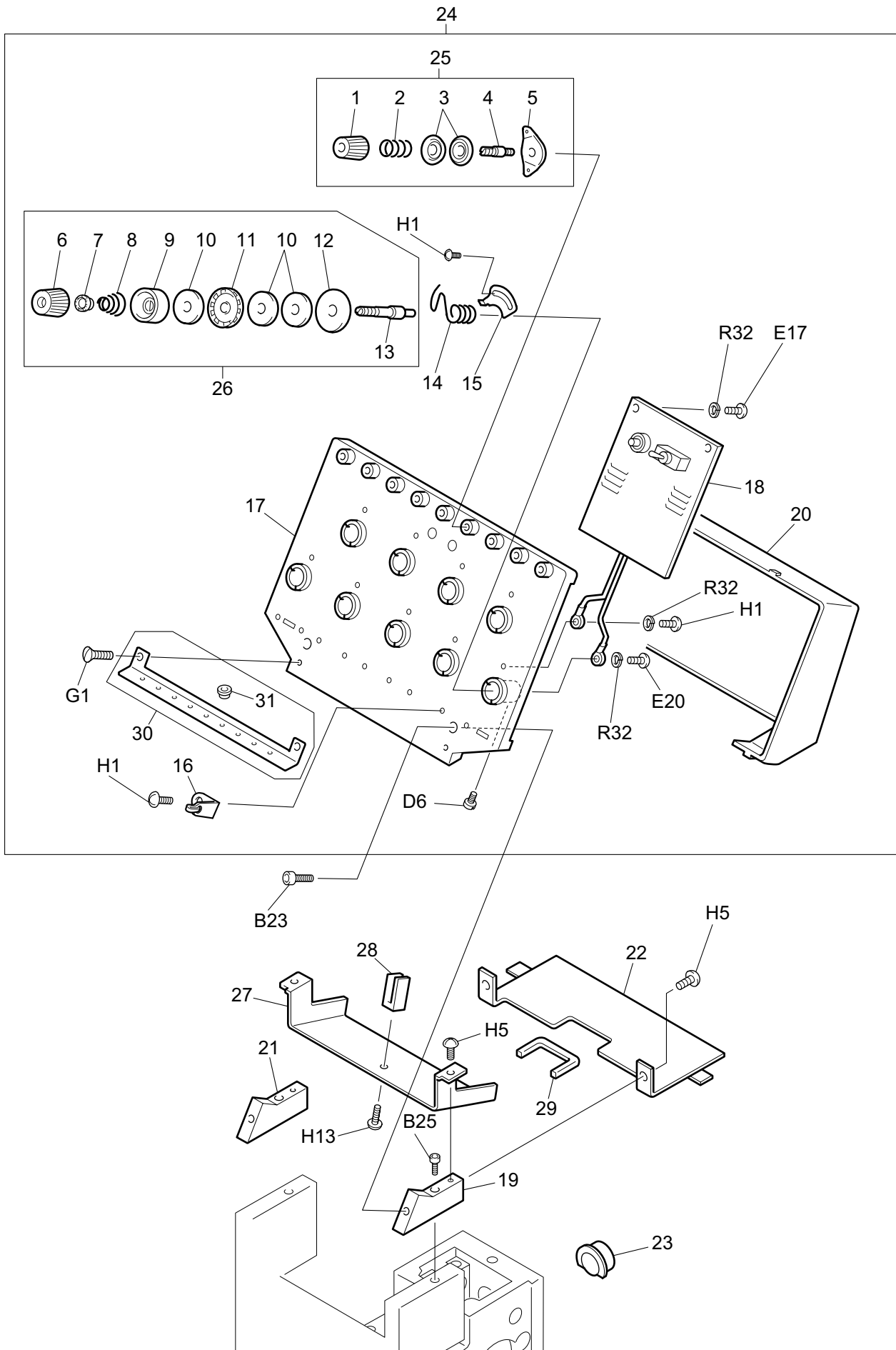


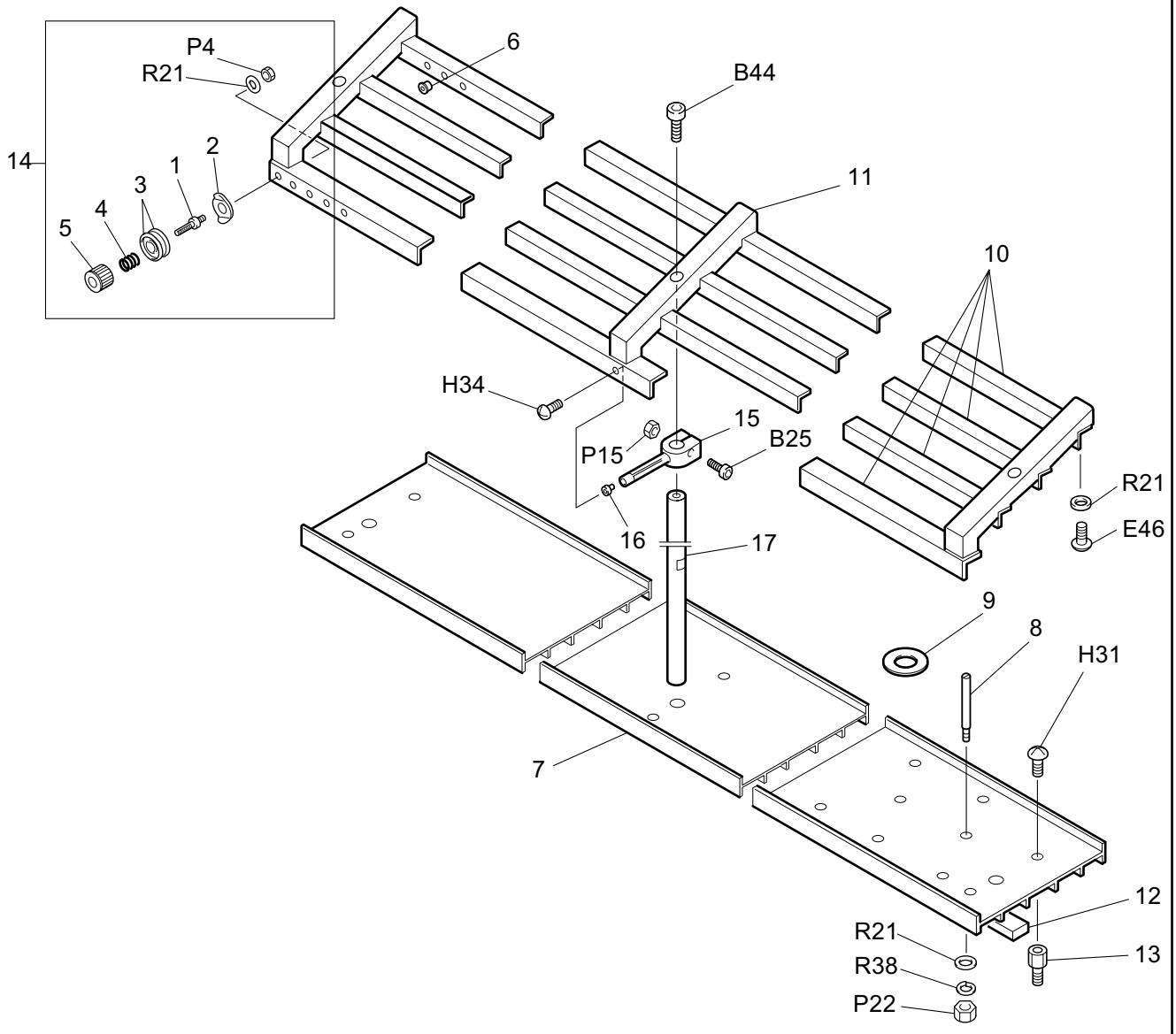


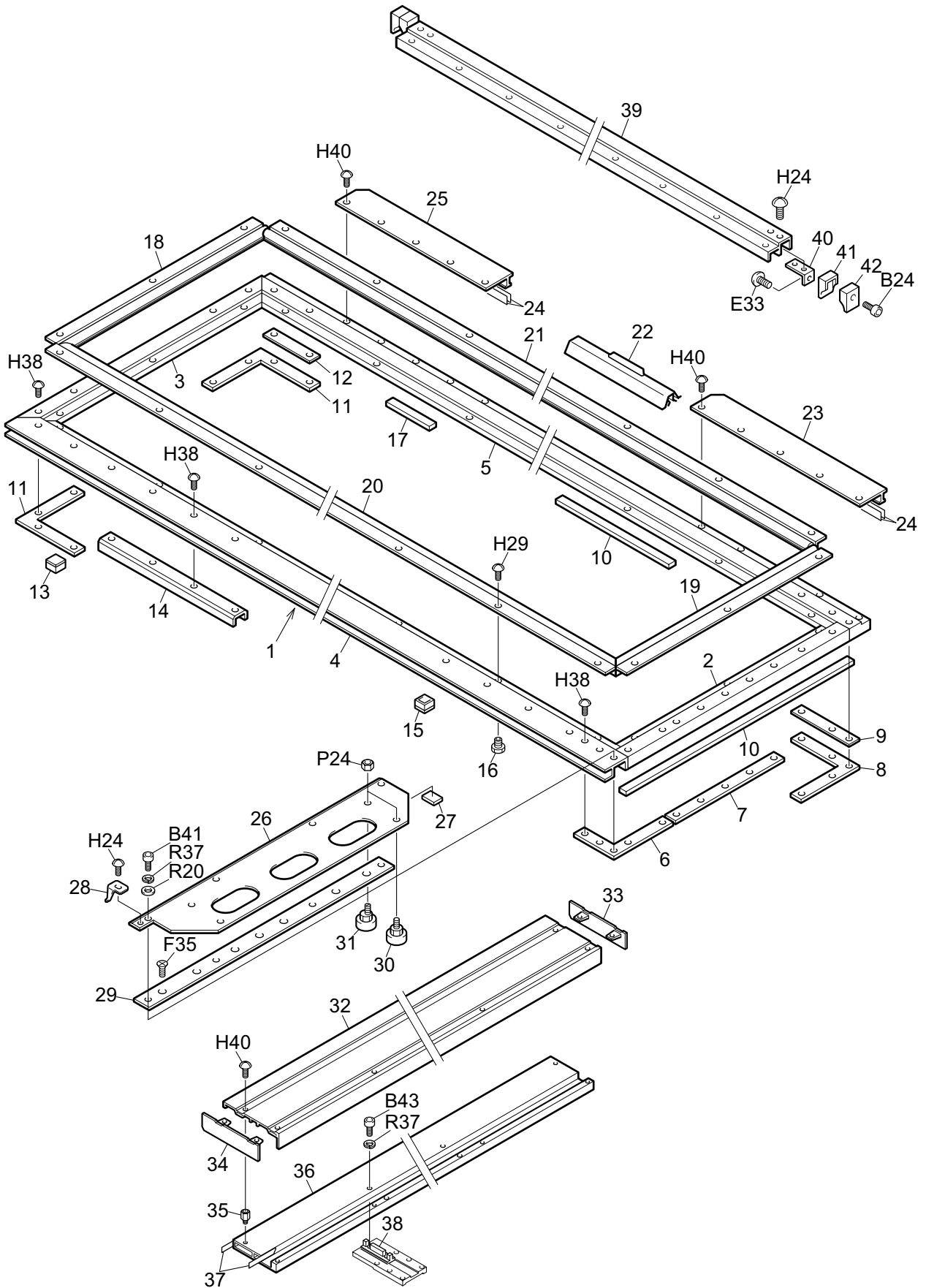


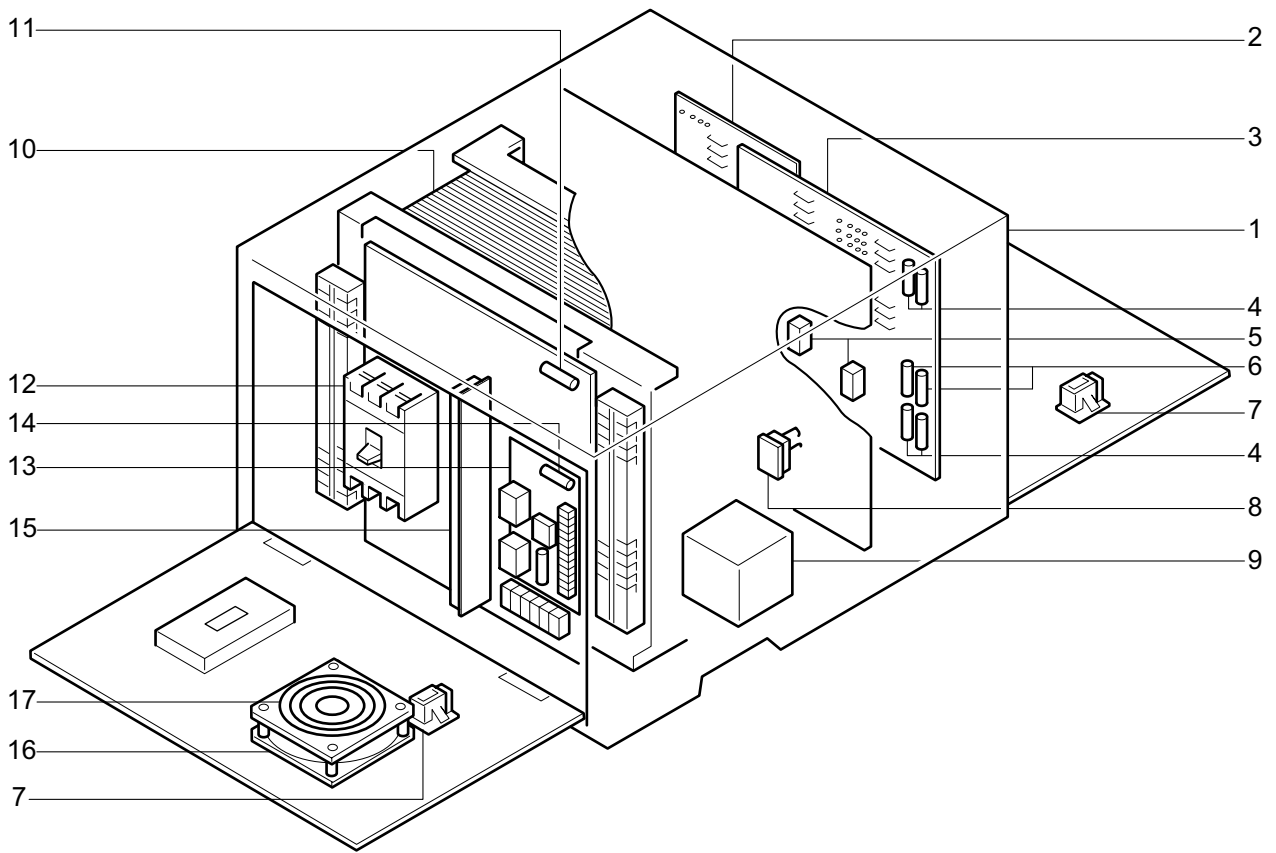


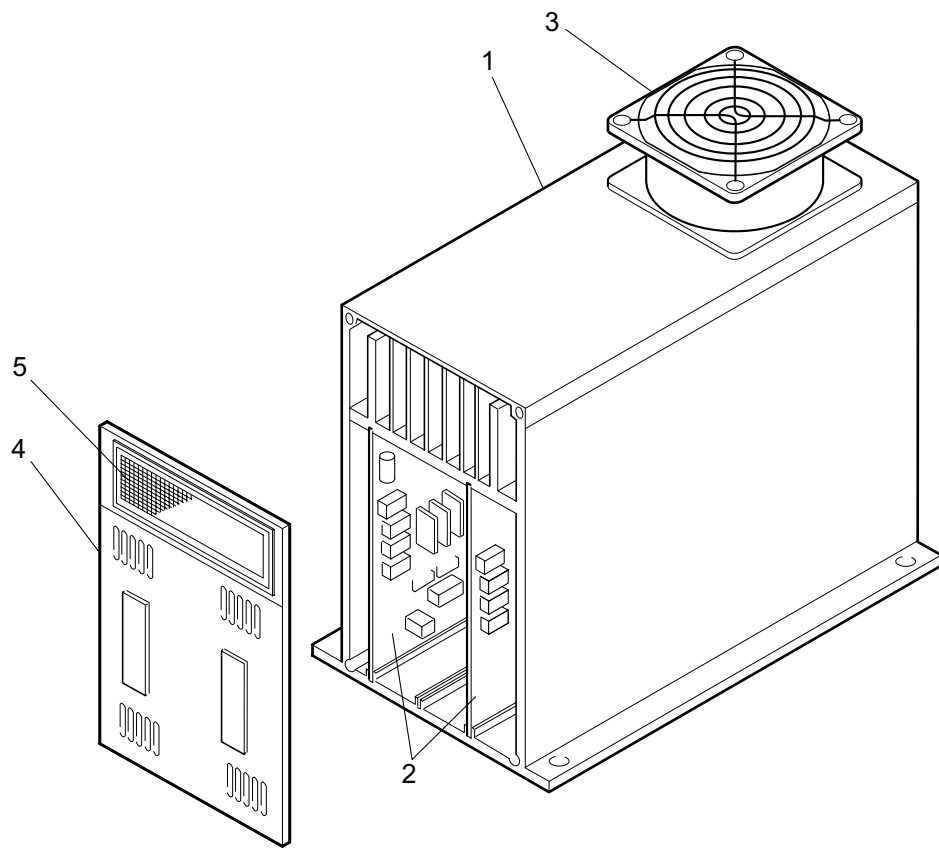


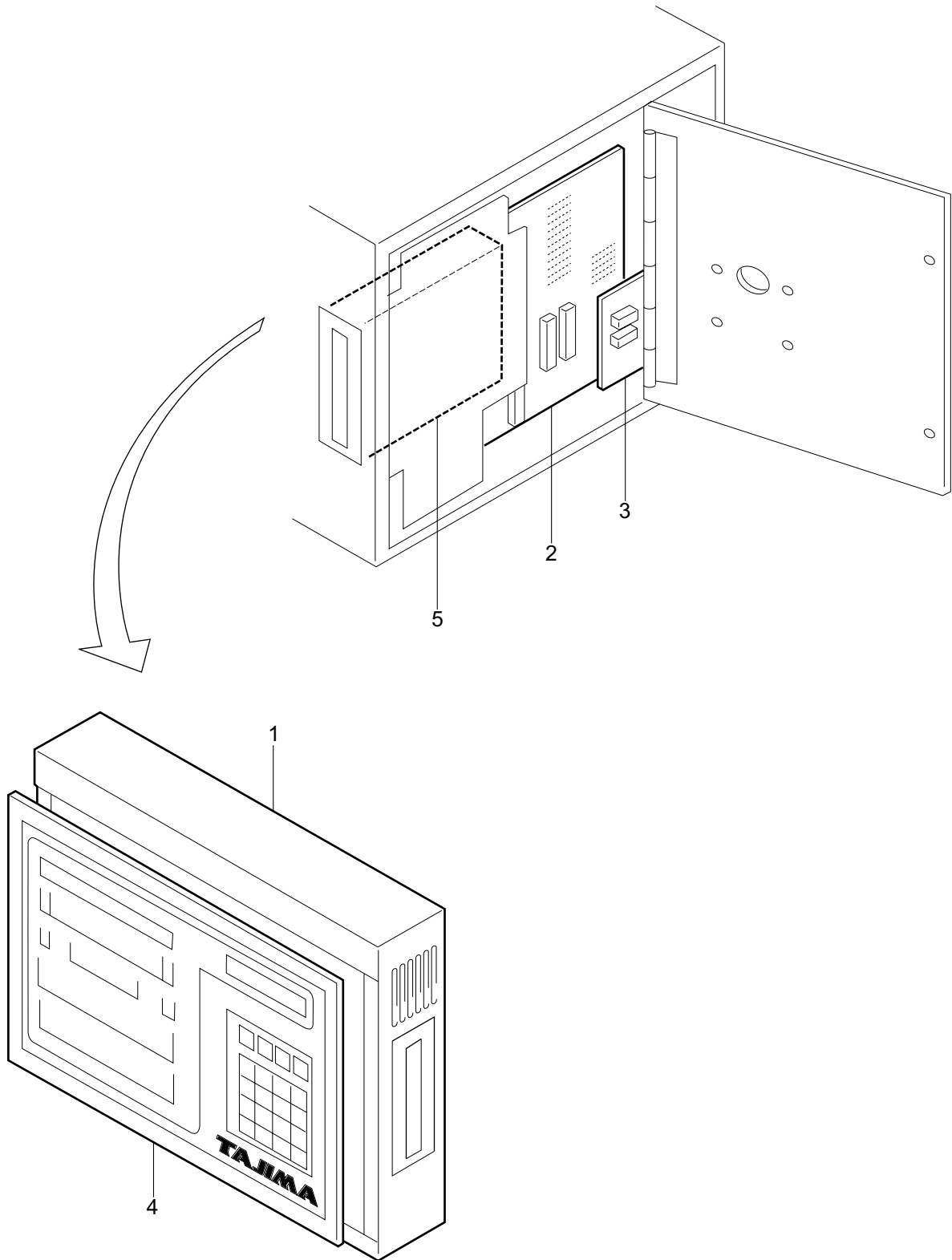


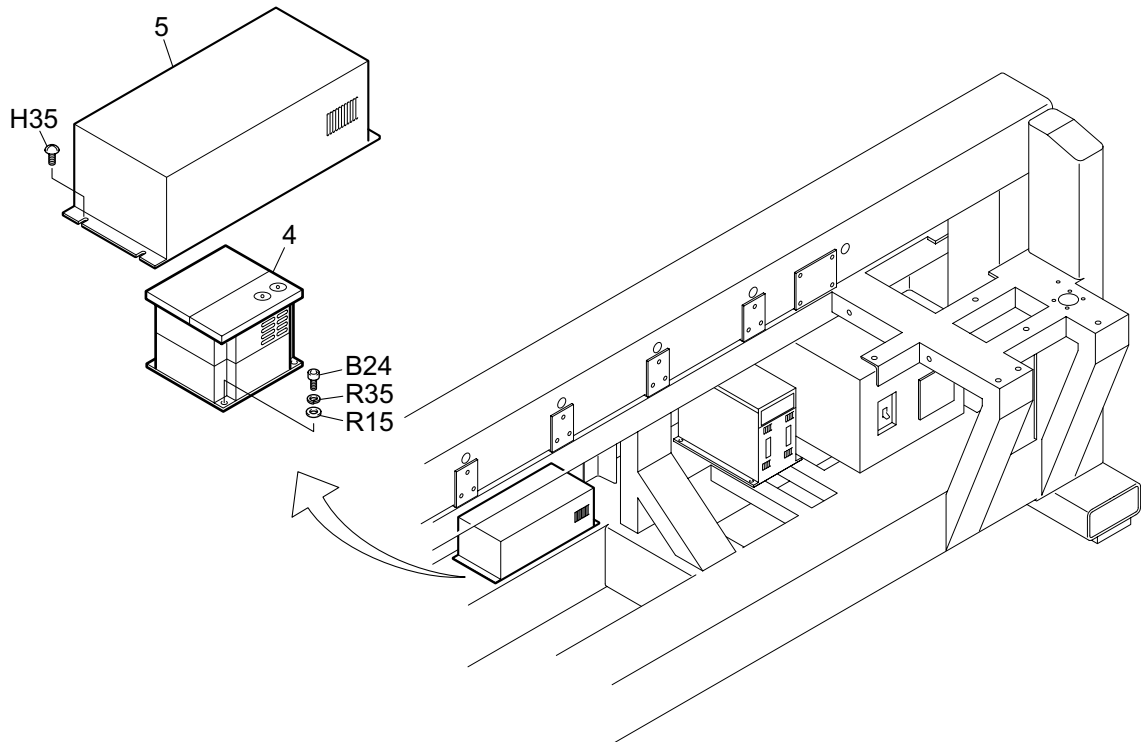
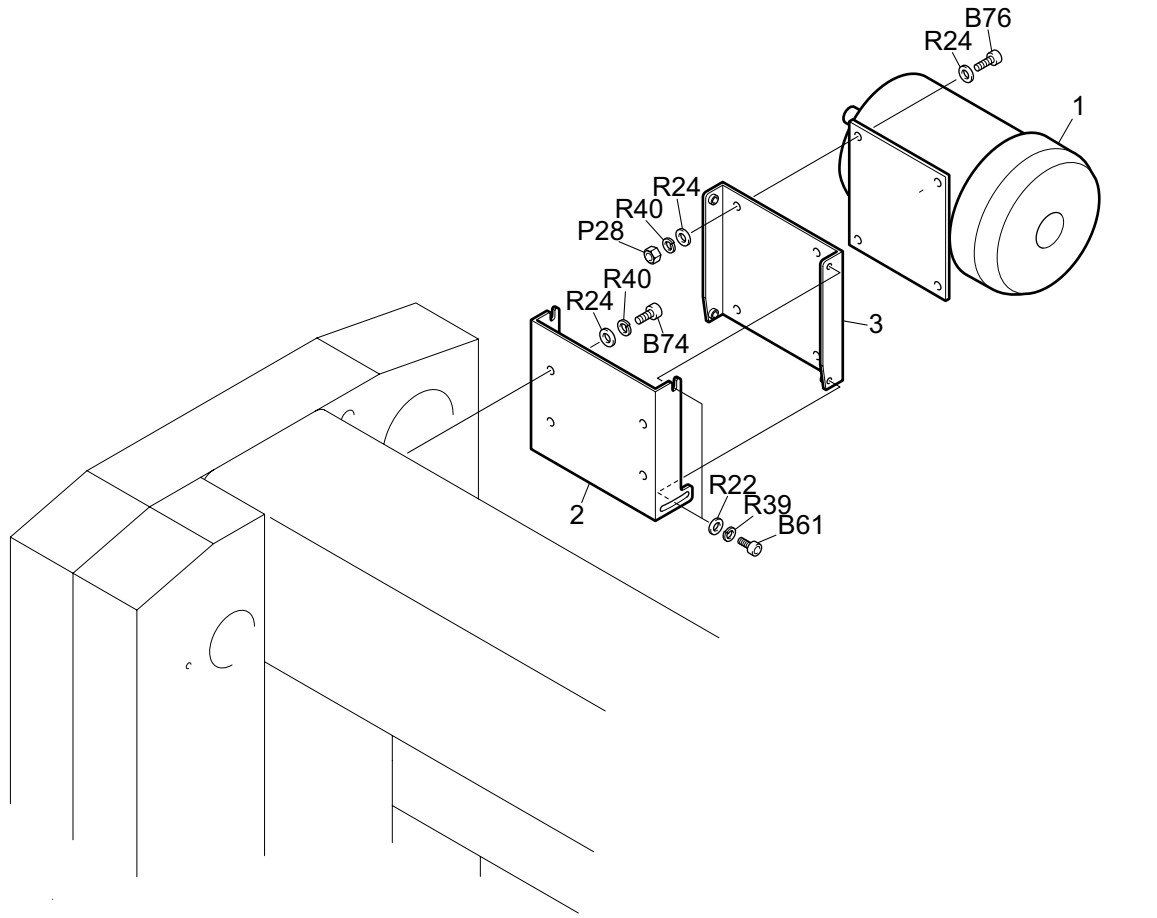












No.	Part No.	Remark	No.	Part No.	Remark
A Flat Fillister Head Screw			B19	SS6204080TD0	M4*8
A1	SM15015450CN	1/8*44*5	B20	SS6204080TN0	M4*8
A2	SM15015460CN	1/8*44*6	B21	SS6204100TD0	M4*10
A3	SM16515530CN	9/64*40*3	B22	SS6204100TN0	M4*10
A4	SM14020540CN	9/64*40*4	B23	SS6204120TN0	M4*12
A5	SM16516540SA	9/64*40*4	B24	SS6204150TN0	M4*15
A6	SM17010540CN	9/64*40*4	B25	SS6204180TN0	M4*18
A7	SM1E515550CN	9/64*40*5	B26	SS6204200TN0	M4*20
A8	SM14020560CN	9/64*40*6	B27	SS6204250TN0	M4*25
A9	SM15525560CN	9/64*40*6	B28	SS6204250TN1	M4*25
A10	SM15526570CN	9/64*40*7	B29	SS6204300TN0	M4*30
A11	SM15020580CN	9/64*40*8	B30	SS6204350TN0	M4*35
A12	SM15530580CN	9/64*40*8	B31	SS6204400TN0	M4*40
A13	SM150205A0CN	9/64*40*10	B32	SS6204450TN0	M4*45
A14	SM150205C0CN	9/64*40*12	B33	SS6205060TN0	M5*6
A15	SM150205F0CN	9/64*40*15	B34	SS6205080TN0	M5*8
A16	SM15422643TN	11/64*40*4.3	B35	SS6205100TD0	M5*10
A17	SM17017670CN	11/64*40*7	B36	SS6205100TN0	M5*10
A18	SM1C035675CN	11/64*40*7.5	B37	SS6205100TP0	M5*10
A19	SM10825690SH	11/64*40*9	B38	SS6205120TN0	M5*12
A20	SM146266B5CN	11/64*40*11.5	B39	SS6205140TN0	M5*14
A21	SM172316C0CN	11/64*40*12	B40	SS6205150TD0	M5*15
A22	SS6003080SC0	M3*8	B41	SS6205150TN0	M5*15
A23	SS6003080SD0	M3*8	B42	SS6205160TN0	M5*16
A24	SS6003100CC0	M3*10	B43	SS6205180TN0	M5*18
A25	SS6004100SC0	M4*10	B44	SS6205200TD0	M5*20
			B45	SS6205200TN0	M5*20
			B46	SS6205220TN0	M5*22
			B47	SS6205230TN0	M5*23
			B48	SS6205250TN0	M5*25
			B49	SS6205300TN0	M5*30
B Hexagon Socket Head Cap Screw			B50	SS6205350TN0	M5*35
B1	SS6202080TD0	M2*8	B51	SS6205350TN1	M5*35
B2	SS6202100TD0	M2*10	B52	SS6205500TN0	M5*50
B3	SS6276050TN0	M2.6*5	B53	SS6205500TN1	M5*50
B4	SS6203030TN0	M3*3	B54	SS6205550TN0	M5*55
B5	SS6203040TN0	M3*4	B55	SS6205600TN0	M5*60
B6	SS6203050TN0	M3*5	B56	SS6205600TN1	M5*60
B7	SS6203060TN0	M3*6	B57	SS6206080TN0	M6*8
B8	SS6203080TD0	M3*8	B58	SS6206090TN0	M6*9
B9	SS6203080TN0	M3*8	B59	SS6206100TN0	M6*10
B10	SS6203100TN0	M3*10	B60	SS6206120TN0	M6*12
B11	SS6203120TN0	M3*12	B61	SS6206150TN0	M6*15
B12	SS6203150TN0	M3*15	B62	SS6206180TN0	M6*18
B13	SS6203160TN0	M3*16	B63	SS6206200TN0	M6*20
B14	SS6203180TN0	M3*18	B64	SS6206250TN0	M6*25
B15	SS6203200TN0	M3*20	B65	SS6206300TN0	M6*30
B16	SS6203250TN0	M3*25	B66	SS6206350TN0	M6*35
B17	SS6204050TN0	M4*5	B67	SS6206400TN0	M6*40
B18	SS6204060TN0	M4*6	B68	SS6206450TN0	M6*45

B · C · D · E

No.	Part No.	Remark	No.	Part No.	Remark
B Hexagon Socket Head Cap Screw					
B69	SS6206450TN1	M6*45			
B70	SS6206500TN1	M6*50			
B71	SS6206650TN0	M6*65	D Round Fillister Head Screw		
B72	SS6206800TN1	M6*80	D1	SM66514540CL	9/64*40*4
B73	SS6206A00TN0	M6*100	D2	SM66015550CL	9/64*40*5
B74	SS6208120TN0	M8*12	D3	SM66015550CN	9/64*40*5
B75	SS6208150TN0	M8*15	D4	SM67018550CN	9/64*40*5
B76	SS6208150TP0	M8*15	D5	SM67020550CN	9/64*40*5
B77	SS6208200TN0	M8*20	D6	SM66015560CL	9/64*40*6
B78	SS6208250TN0	M8*25	D7	SM66015560CN	9/64*40*6
B79	SS6208300TN0	M8*30	D8	SM67020560CL	9/64*40*6
B80	SS6208350TN0	M8*35	D9	SM67020560CN	9/64*40*6
B81	SS6208400TN0	M8*40	D10	SM65817568CN	9/64*40*6.8
B82	SS6208400TN1	M8*40	D11	SM660255A0CN	9/64*40*10
B83	SS6208450TN0	M8*45	D12	SM670205C0CN	9/64*40*12
B84	SS6208450TN1	M8*45	D13	SM67015660CL	11/64*40*6
B85	SS6208500TN0	M8*50	D14	SM67010665CL	11/64*40*6.5
B86	SS6208600TN0	M8*60	D15	SM675306C0CN	11/64*40*12
B87	SS6208750TN0	M8*75	D16	SM675256F0CN	11/64*40*15
B88	SS6210250TN0	M10*25	D17	SM69065CQ5CN	9/32*28*24.5
B89	SS6210300TN0	M10*30	D18	SS7003050SD0	M3*5
B90	SS6210400TN0	M10*40			
B91	SS6212300TN0	M12*30			
			E Pan Head Screw		
			E1	SS4164014MZ0	M1.4*1.4
C Hexagon Bolt			E2	SS4102030MZ0	M2*3
C1	SS9303060SD0	M3*6	E3	SS4102040MZ0	M2*4
C2	SS9304080SD0	M4*8	E4	SS4102080MZ0	M2*8
C3	SS9305100SD0	M5*10	E5	SS4175030MZ0	M2.5*3
C4	SS9305150SC0	M5*15	E6	SS4175040MZ0	M2.5*4
C5	SS9305150SD0	M5*15	E7	SS4175050MZ0	M2.5*5
C6	SS9305200SD0	M5*20	E8	SS4175080MZ0	M2.5*8
C7	SS9306150SC0	M6*15	E9	SS4175130MZ0	M2.5*13
C8	SS9306450SD0	M6*45	E10	SS4175130SD0	M2.5*13
C9	SS9306500SC0	M6*50	E11	SS4103030MZ0	M3*3
C10	SS9306500SD0	M6*50	E12	SS4103030SD0	M3*3
C11	SS9306550SD0	M6*55	E13	SS4103040CD0	M3*4
C12	SS9306650SD0	M6*65	E14	SS4103040MZ0	M3*4
C13	SS9306750SC0	M6*75	E15	SS4103040SD0	M3*4
C14	SS9308150TN0	M8*15	E16	SS4103050MZ0	M3*5
C15	SS9310300SC0	M10*30	E17	SS4103050SD0	M3*5
C16	SS9310350SC0	M10*35	E18	SS4103060MZ0	M3*6
C17	SS9310350TN0	M10*35	E19	SS4103060SA0	M3*6
C18	SS9310400SC1	M10*40	E20	SS4103060SD0	M3*6
C19	SS9312500TN0	M12*50	E21	SS4103080MZ0	M3*8
			E22	SS4103080SA0	M3*8

No.	Part No.	Remark	No.	Part No.	Remark
E Pan Head Screw			F15	SS1103080SN0	M3*8
E23	SS4103080SD0	M3*8	F16	SS1103100SD0	M3*10
E24	SS4103100SC1	M3*10	F17	SS1103120MZ0	M3*12
E25	SS4103100SD0	M3*10	F18	SS1103120SD0	M3*12
E26	SS4103120SD0	M3*12	F19	SS1103150MZ0	M3*15
E27	SS4103140SA0	M3*14	F20	SS1103160SD0	M3*16
E28	SS4103140SD0	M3*14	F21	SS1104050SD0	M4*5
E29	SS4103150SD0	M3*15	F22	SS1104060SD0	M4*6
E30	SS4103400SD1	M3*40	F23	SS1104080MZ0	M4*8
E31	SS4103500SD1	M3*50	F24	SS1104080SD0	M4*8
E32	SS4104040SD0	M4*4	F25	SS1104100MZ0	M4*10
E33	SS4104050SD0	M4*5	F26	SS1104100SD0	M4*10
E34	SS4104060MZ0	M4*6	F27	SS1104120SD0	M4*12
E35	SS4104060SD0	M4*6	F28	SS1104140SD0	M4*14
E36	SS4104080SD0	M4*8	F29	SS1104150SD0	M4*15
E37	SS4104100SD0	M4*10	F30	SS1104200SD0	M4*20
E38	SS4104120SD0	M4*12	F31	SS1104220SD0	M4*22
E39	SS4104150SD0	M4*15	F32	SS1104250SD0	M4*25
E40	SS4104180SD0	M4*18	F33	SS1105060SD0	M5*6
E41	SS4104500SD0	M4*50	F34	SS1105080SD0	M5*8
E42	SS4104600SD1	M4*60	F35	SS1105100SD0	M5*10
E43	SS4105060SD0	M5*6	F36	SS1105120SD0	M5*12
E44	SS4105070SD0	M5*7	F37	SS1105150SD0	M5*15
E45	SS4105080SD0	M5*8	F38	SS1105300SD0	M5*30
E46	SS4105100MZ0	M5*10	F39	SS1105350SD0	M5*35
E47	SS4105100SD0	M5*10	F40	SS1106150SC0	M6*15
E48	SS4105120SD0	M5*12	F41	SS1106150SD0	M6*15
E49	SS4105300SD1	M5*12	F42	SS1106350SD0	M6*35
E50	SS4105500SD1	M5*50	F43	SS1108120SD0	M8*12
E51	SS4105600SD1	M5*60	F44	SS1108700TN0	M8*70
F Countersunk Head Screw			G Round Countersunk Head Screw		
F1	SMA55005A0CN	9/64*40*10	G1	SMC5000460CL	1/8*44*6
F2	SMB7000680CN	11/64*40*8	G2	SMC5000530CL	9/64*40*3
F3	SS1102060SD0	M2*6	G3	SMC5000535CL	9/64*40*3.5
F4	SS1103040MZ0	M3*4	G4	SMC5000540CL	9/64*40*4
F5	SS1103040SD0	M3*4	G5	SMC5000560CL	9/64*40*6
F6	SS1103050SD0	M3*5	G6	SMC5000570CL	9/64*40*7
F7	SS1003060SD0	M3*6	G7	SMC5000595CL	9/64*40*9.5
F8	SS1103060MZ0	M3*6			
F9	SS1103060SD0	M3*6			
F10	SS1103070SD0	M3*7			
F11	SS1003080SD0	M3*8			
F12	SS1103080MZ0	M3*8			
F13	SS1103080SC0	M3*8	H Truss Head Screw		
F14	SS1103080SD0	M3*8	H1	SMF6016470CL	1/8*44*7

H · J · K · L

No.	Part No.	Remark	No.	Part No.	Remark
H Truss Head Screw					
H2	SMF8020530CL	9/64*40*3.5			
H3	SMF8020540CL	9/64*40*4			
H4	SME9510540CM	9/64*40*4			
H5	SMF8020560CL	9/64*40*6			
H6	SMF8020580CL	9/64*40*8	J Round Head Screw		
H7	SS0175030MZ0	M2.5*3	J1	SS3102030MZ0	M2*3
H8	SS0175030SD0	M2.5*3	J2	SS3103080SD0	M3*8
H9	SS0175040MZ0	M2.5*4	J3	SS3103080SE0	M3*8
H10	SS0175040SA0	M2.5*4	J4	SS3103100MZ0	M3*10
H11	SS0175040SD0	M2.5*4			
H12	SS0103030MZ0	M3*3			
H13	SS0103040SD0	M3*4			
H14	SS0103050MZ0	M3*5			
H15	SS0103050SD0	M3*5			
H16	SS0103060MZ0	M3*6	K Slotted Set Screw		
H17	SS0103060SD0	M3*6	K1	SMK0000435CN	1/8*44*3.5
H18	SS0103060SA0	M3*6	K2	SMK0000560CN	9/64*40*6
H19	SS0103080SD0	M3*8	K3	SMK0000625CN	11/64*40*2.5
H20	SS0103080SA0	M3*8	K4	SMK0000635CN	11/64*40*3.5
H21	SS0103100MZ0	M3*10	K5	SMK0000640CN	11/64*40*4
H22	SS0103100SD0	M3*10	K6	SMK0000650CN	11/64*40*5
H23	SS0103200SD0	M3*20	K7	SMK0000A50CN	15/64*28*5
H24	SS0104050SD0	M4*5	K8	SMK0000AA0CN	15/64*28*10
H25	SS0104060MZ0	M4*6	K9	SMK0000AF0CN	15/64*28*15
H26	SS0104060SD0	M4*6	K10	SMK0000AH0CN	15/64*28*17
H27	SS0104080MZ0	M4*8	K11	SMK0000B40CN	1/4*40*4
H28	SS0104080SD0	M4*8	K12	SMK0000B45CN	1/4*40*4.5
H29	SS0104080SD2	M4*8	K13	SMK0000B50CN	1/4*40*5
H30	SS0104100MZ0	M4*10	K14	SMK0000B60CN	1/4*40*6
H31	SS0104100SD0	M4*10	K15	SMK0000B80CN	1/4*40*8
H32	SS0104120SD0	M4*12	K16	SMK0000CC0CN	9/32*28*12
H33	SS0104150SD0	M4*15	K17	SS8005060TN0	M5*6
H34	SS0104200SD0	M4*20			
H35	SS0105050SD0	M5*5			
H36	SS0105060SD0	M5*6			
H37	SS0105070SD0	M5*7			
H38	SS0105080SD0	M5*8			
H39	SS0105100CB0	M5*10	L Hexagon Socket Head Set Screw		
H40	SS0105100SD0	M5*10	L1	SMJ0000420CN	1/8*44*2
H41	SS0105120SD0	M5*12	L2	SMJ0000640CN	11/64*40*4
H42	SS0105150SD0	M5*15	L3	SMJ0000660CN	11/64*40*6
H43	SS0105200SD0	M5*20	L4	SMJ0000680CN	11/64*40*8
H44	SS0105250SD0	M5*25	L5	SS8203020TN0	M3*2
H45	SS0106080SD0	M6*8	L6	SS8203030TN0	M3*3
H46	SS0106100SD0	M6*10	L7	SS8203040TN0	M3*4
H47	SS0106220SD0	M6*22	L8	SS8203050TN0	M3*5
H48	SS0106250SD0	M6*25	L9	SS8203060TN0	M3*6
H49	SS0106350SD0	M6*35	L10	SS8204030TN0	M4*3
H50	SS0106400SD0	M6*40	L11	SS8204040TN0	M4*4

No.	Part No.	Remark	No.	Part No.	Remark
L Hexagon Socket Head Set Screw					
L12	SS8204050TN0	M4*5	P Nut		
L13	SS8204060TN0	M4*6	P1	SMN046030CN0	1/8*44*6*3
L14	SS8204060TN1	M4*6	P2	SMN056030CN0	9/64*40*6*3
L15	SS8204080TN0	M4*8	P3	SMN066020CN0	11/64*40*6*2
L16	SS8204100TN0	M4*10	P4	SMN066030CN0	11/64*40*6*3
L17	SS8204120TN0	M4*12	P5	SMN067030CN0	11/64*40*7*3
L18	SS8205040TN0	M5*4	P6	SMN167030CN0	11/64*40*7*3
L19	SS8205050TN0	M5*5	P7	SSN002SD0000	M2 Type 1
L20	SS8205060TN0	M5*6	P8	SSN075MZ0000	M2.5 Type 1
L21	SS8205080TN0	M5*8	P9	SSN003MZ0000	M3 Type 1
L22	SS8205100TN0	M5*10	P10	SSN003SC0000	M3 Type 1
L23	SS8205120TN0	M5*12	P11	SSN003SD0000	M3 Type 1
L24	SS8205150TN0	M5*15	P12	SSN403SD0000	M3 Thumbscrew Type 2
L25	SS8206050TN0	M6*5	P13	SSN203SC0000	M3 Type 3
L26	SS8206060TN0	M6*6	P14	SSN285SC0000	M3.5 Type 3
L27	SS8206080TN0	M6*8	P15	SSN004SC0000	M4 Type 1
L28	SS8206100TN0	M6*10	P16	SSN004SD0000	M4 Type 1
L29	SS8206180TN0	M6*18	P17	SSN204SC0000	M4 Type 3
L30	SS8208080TN0	M8*8	P18	SSN204SD0000	M4 Type 3
L31	SS8208100TN0	M8*10	P19	SSN005SC0000	M5 Type 1
L32	SS8208150TN0	M8*15	P20	SSN005SD0000	M5 Type 1
			P21	SSN205SC0000	M5 Type 3
			P22	SSN205SD0000	M5 Type 3
			P23	SSN605SD0000	M5 Cap Screw
			P24	SSN006SC0000	M6 Type 1
			P25	SSN006SC1000	M6 Type 1 (Left)
			P26	SSN006SD0000	M6 Type 1
M Hexagon Socket Head Button Screw			P27	SSN206SC0000	M6 Type 3
M1	SS3203050SC0	M3*5	P28	SSN008SC0000	M8 Type 1
M2	SS3204060SC0	M4*6	P29	SSN208SC0000	M8 Type 3
M3	SS3205100SC0	M5*10	P30	SSN010SC0000	M10 Type 1
			P31	SSN710CD0000	M10 with Flange
			P32	SSN710SC0000	M10 with Flange
			P33	SSN012SC0000	M12 Type 1
			P34	SSN212SC0000	M12 Type 3
			P35	SSN216SC0000	M16 Type 3
N Screw with Washer			P36	SSN020SC0000	M20 Type 1
N1	SSA003080000	M3*8			
N2	SSA003180000	M3*18			
N3	SSA004080000	M4*8			
N4	SSA004100000	M4*10			
N5	SSA004550000	M4*55			
N6	SSA005100000	M5*10	R Washer		
N7	SSA005120000	M5*12	R1	WSP640303MZ0	Plain M1.4*3*0.3t
N8	SSA005140000	M5*14	R2	WSP023505XZ0	Plain M2*3.5*0.5t
N9	SSA005180000	M5*18	R3	WSP767505XB0	Plain M2.6*7.5*0.5t
			R4	WSP036003XZ0	Plain M3*6*0.3t
			R5	WSP036005SC0	Plain M3*6*0.5t
			R6	WSP037005SD0	Plain M3*7*0.5t
			R7	WSP038003SD0	Plain M3*8*0.3t

